

Anti-p38 (phospho Y182) antibody ab47363

★★★★★ [2 Abreviews](#) [120 References](#) [画像数 2](#)

製品の概要

製品名	Anti-p38 (phospho Y182) antibody
製品の詳細	Rabbit polyclonal to p38 (phospho Y182)
由来種	Rabbit
アプリケーション	適用あり: WB, IHC-P
種交差性	交差種: Human
免疫原	Synthetic peptide corresponding to Human p38 (phospho Y182). Database link: Q16539
特記事項	<p>The Life Science industry has been in the grips of a reproducibility crisis for a number of years. Abcam is leading the way in addressing this with our range of recombinant monoclonal antibodies and knockout edited cell lines for gold-standard validation. Please check that this product meets your needs before purchasing.</p> <p>If you have any questions, special requirements or concerns, please send us an inquiry and/or contact our Support team ahead of purchase. Recommended alternatives for this product can be found below, along with publications, customer reviews and Q&As</p>

製品の特性

製品の状態	Liquid
保存方法	Shipped at 4°C. Store at -20°C. Stable for 12 months at -20°C.
バッファー	<p>pH: 7</p> <p>Preservative: 0.02% Sodium azide</p> <p>Constituents: PBS, 50% Glycerol (glycerin, glycerine), 0.87% Sodium chloride</p> <p>Without Mg+2 and Ca+2</p>
精製度	Immunogen affinity purified
特記事項 (精製)	The antibody was affinity-purified using epitope-specific phosphopeptide. The antibody against non-phosphopeptide was removed by chromatography using non-phosphopeptide corresponding to the phosphorylation site.
ポリ/モノ	ポリクローナル
アイソタイプ	IgG

アプリケーション

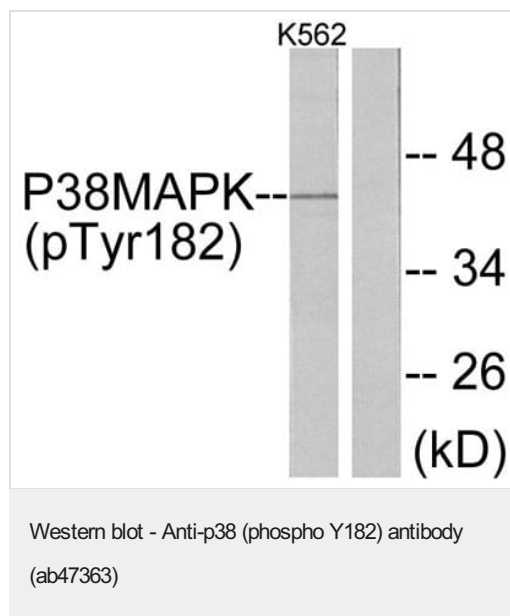
The Abpromise guarantee **Abpromise保証は、次のテスト済みアプリケーションにおけるab47363の使用に適用されます**
アプリケーションノートには、推奨の開始希釈率がありますが、適切な希釈率につきましてはご確認ください。

アプリケーション	Abreviews	特記事項
WB	★★★★★ (1)	1/500 - 1/1000. Detects a band of approximately 41 kDa (predicted molecular weight: 41 kDa).
IHC-P	★★★★★ (1)	Use at an assay dependent concentration.

ターゲット情報

機能	Responds to activation by environmental stress, pro-inflammatory cytokines and lipopolysaccharide (LPS) by phosphorylating a number of transcription factors, such as ELK1 and ATF2 and several downstream kinases, such as MAPKAPK2 and MAPKAPK5. Plays a critical role in the production of some cytokines, for example IL-6. May play a role in stabilization of EPO mRNA during hypoxic stress. Isoform Mxi2 activation is stimulated by mitogens and oxidative stress and only poorly phosphorylates ELK1 and ATF2. Isoform Exip may play a role in the early onset of apoptosis.
組織特異性	Brain, heart, placenta, pancreas and skeletal muscle. Expressed to a lesser extent in lung, liver and kidney.
配列類似性	Belongs to the protein kinase superfamily. CMGC Ser/Thr protein kinase family. MAP kinase subfamily. Contains 1 protein kinase domain.
ドメイン	The TXY motif contains the threonine and tyrosine residues whose phosphorylation activates the MAP kinases.
翻訳後修飾	Dually phosphorylated on Thr-180 and Tyr-182, which activates the enzyme. Phosphorylated upon DNA damage, probably by ATM or ATR.
細胞内局在	Cytoplasm. Nucleus.

画像

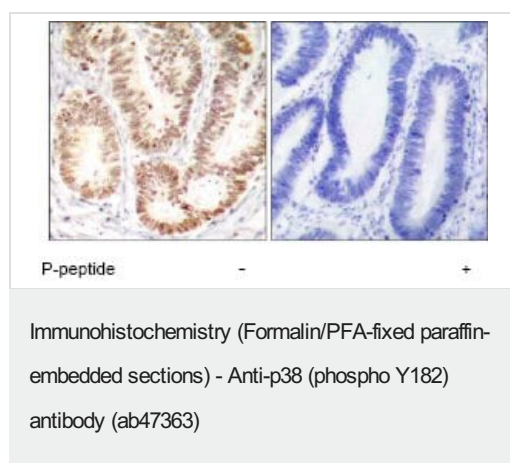


All lanes : Anti-p38 (phospho Y182) antibody (ab47363)

Lane 1 : K562 cells, treated with UV

Lane 2 : K562 cells, untreated

Predicted band size: 41 kDa



Immunohistochemical analysis of paraffin-embedded human colon carcinoma tissue using ab47363. Left hand image without immunising peptide; right hand image with immunising peptide.

Please note: All products are "FOR RESEARCH USE ONLY. NOT FOR USE IN DIAGNOSTIC PROCEDURES"

Our Abpromise to you: Quality guaranteed and expert technical support

- Replacement or refund for products not performing as stated on the datasheet
- Valid for 12 months from date of delivery
- Response to your inquiry within 24 hours
- We provide support in Chinese, English, French, German, Japanese and Spanish
- Extensive multi-media technical resources to help you
- We investigate all quality concerns to ensure our products perform to the highest standards

If the product does not perform as described on this datasheet, we will offer a refund or replacement. For full details of the Abpromise, please visit <https://www.abcam.co.jp/abpromise> or contact our technical team.

Terms and conditions

- Guarantee only valid for products bought direct from Abcam or one of our authorized distributors