

Anti-p38 delta/MAPK13 + p38 alpha/MAPK14 antibody [M138] ab31828

KO 評価済

★★★★★ [16 Abreviews](#) [164 References](#) [画像数 9](#)

製品の概要

製品名	Anti-p38 delta/MAPK13 + p38 alpha/MAPK14 antibody [M138]
製品の詳細	Mouse monoclonal [M138] to p38 delta/MAPK13 + p38 alpha/MAPK14
由来種	Mouse
アプリケーション	適用あり: IHC-P, WB, ICC/IF, Flow Cyt (Intra), ELISA
種交差性	交差種: Mouse, Rat, Cow, Dog, Human, African green monkey, Syrian hamster
免疫原	Recombinant fragment corresponding to Rat p38 alpha/MAPK14 (C terminal). Identical to human and mouse.
エピトープ	ab31828 recognises an epitope located in the C terminal region of p38.
ポジティブ・コントロール	A431 cells, Jurkat cells, HeLa cells. IHC: Human esophagus (FFPE) Flow Cyt (intra): A431 cells
特記事項	<p>The Life Science industry has been in the grips of a reproducibility crisis for a number of years. Abcam is leading the way in addressing this with our range of recombinant monoclonal antibodies and knockout edited cell lines for gold-standard validation. Please check that this product meets your needs before purchasing.</p> <p>If you have any questions, special requirements or concerns, please send us an inquiry and/or contact our Support team ahead of purchase. Recommended alternatives for this product can be found below, along with publications, customer reviews and Q&As</p>

製品の特性

製品の状態	Liquid
保存方法	Shipped at 4°C. Store at +4°C short term (1-2 weeks). Upon delivery aliquot. Store at -20°C. Avoid freeze / thaw cycle.
バッファー	Preservative: 0.05% Sodium azide Constituents: 49% PBS, 50% Glycerol, 0.1% BSA
精製度	Protein A purified
特記事項 (精製)	Purified with protein A affinity chromatography.
ポリ/モノ	モノクローナル

クローン名 M138
 アイソタイプ IgG1

アプリケーション

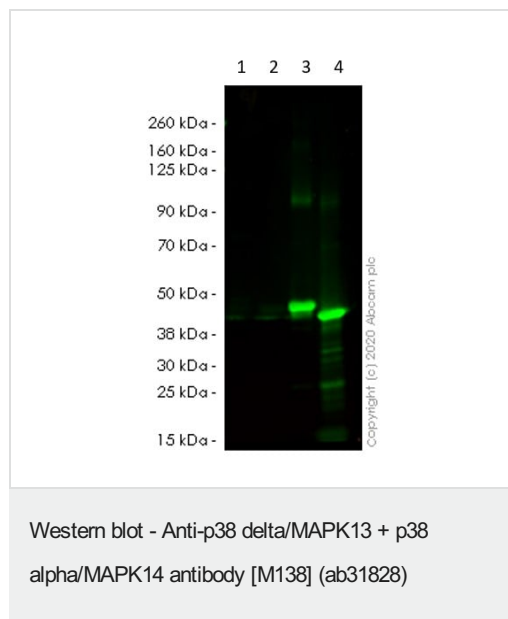
The Abpromise guarantee **Abpromise保証は、次のテスト済みアプリケーションにおけるab31828の使用に適用されず**
 アプリケーションノートには、推奨の開始希釈率がありますが、適切な希釈率につきましてはご検討ください。

アプリケーション	Abreviews	特記事項
IHC-P		1/20 - 1/200. Perform heat mediated antigen retrieval with citrate buffer pH 6 before commencing with IHC staining protocol.
WB	★★★★★ (14)	1/1000. Predicted molecular weight: 41 kDa.
ICC/IF	★★★★☆ (2)	1/200.
Flow Cyt (Intra)		1/1000. ab170190 - Mouse monoclonal IgG1, is suitable for use as an isotype control with this antibody.
ELISA		Use at an assay dependent concentration. Peptide ELISA only.

ターゲット情報

細胞内局在 p38 alpha/MAPK14: Cytoplasm. Nucleus.

画像



All lanes : Anti-p38 delta/MAPK13 + p38 alpha/MAPK14 antibody [M138] (ab31828) at 1/1000 dilution

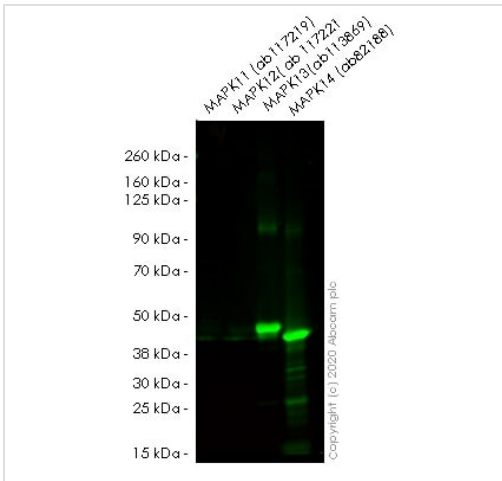
Lane 1 : Recombinant Human p38 beta/MAPK11 protein (**ab117219**)

Lane 2 : Recombinant Human p38 gamma/MAPK12 protein (**ab117221**)

Lane 3 : Recombinant Human p38 delta/MAPK13 protein (**ab113869**)

Lane 4 : Recombinant Human p38 alpha/MAPK14 protein (**ab82188**)

Predicted band size: 41 kDa



Western blot - Anti-p38 delta/MAPK13 + p38 alpha/MAPK14 antibody [M138] (ab31828)

All lanes : Anti-p38 delta/MAPK13 + p38 alpha/MAPK14 antibody [M138] (ab31828) at 1/1000 dilution

Lane 1 : MAPK11 recombinant (**ab117219**)

Lane 2 : MAPK12 recombinant(ab 117221)

Lane 3 : MAPK13 recombinant (**ab113869**)

Lane 4 : MAPK14 (p38) recombinant (**ab82188**)

Lysates/proteins at 0.5 µg per lane.

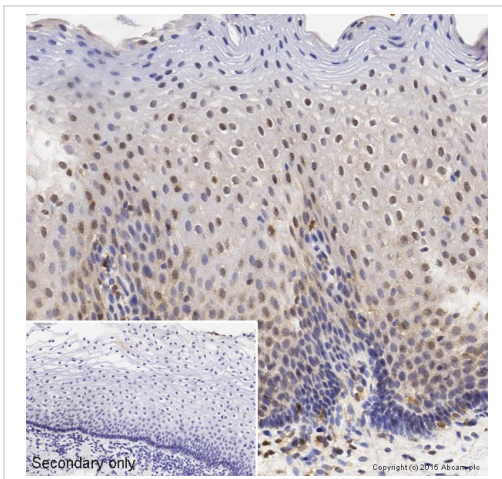
Performed under reducing conditions.

Predicted band size: 41 kDa

Observed band size: 43 kDa

Lanes 1 - 4: Green - ab31828 observed at 43 kDa.

ab31828 was shown to react with Anti-p38 antibody [M138] in Western blot. Membranes were blocked in 100% Licor before incubation with ab31828 and overnight at 4 °C at a 1 in 1000 dilution. Blots were incubated with Goat anti-Mouse IgG H&L (IRDye® 800CW) preabsorbed (**ab216772**) secondary antibody at 1 in 20000 dilution for 1 h at room temperature before imaging.

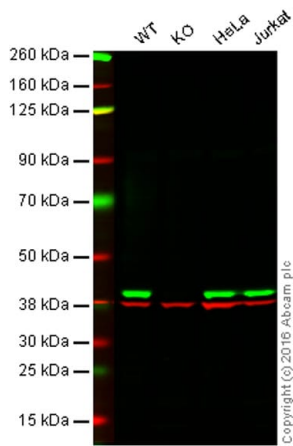


Immunohistochemistry (Formalin/PFA-fixed paraffin-embedded sections) - Anti-p38 delta/MAPK13 + p38 alpha/MAPK14 antibody [M138] (ab31828)

IHC image of ab31828 staining p38 in normal human esophagus formalin-fixed paraffin-embedded tissue sections*, performed on a Leica Bond. The section was pre-treated using heat mediated antigen retrieval with sodium citrate buffer (pH6, epitope retrieval solution 1) for 20 mins. The section was then incubated with ab31828, 1/50 dilution, for 15 mins at room temperature and detected using an HRP conjugated compact polymer system. DAB was used as the chromogen. The section was then counterstained with haematoxylin and mounted with DPX. No primary antibody was used in the negative control (shown on the inset).

For other IHC staining systems (automated and non-automated) customers should optimize variable parameters such as antigen retrieval conditions, primary antibody concentration and antibody incubation times.

*Tissue obtained from the Human Research Tissue Bank, supported by the NIHR Cambridge Biomedical Research Centre



Western blot - Anti-p38 delta/MAPK13 + p38 alpha/MAPK14 antibody [M138] (ab31828)

Lane 1: Wild-type HAP1 cell lysate (20 µg)

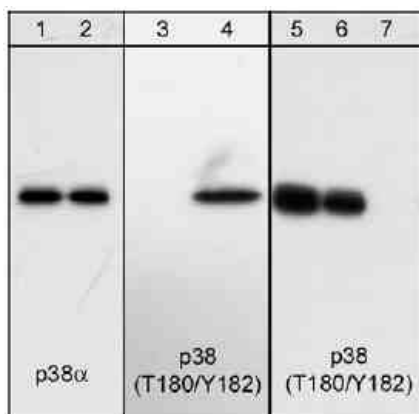
Lane 2: p38 knockout HAP1 cell lysate (20 µg)

Lane 3: HeLa cell lysate (20 µg)

Lane 4: Jurkat cell lysate (20 µg)

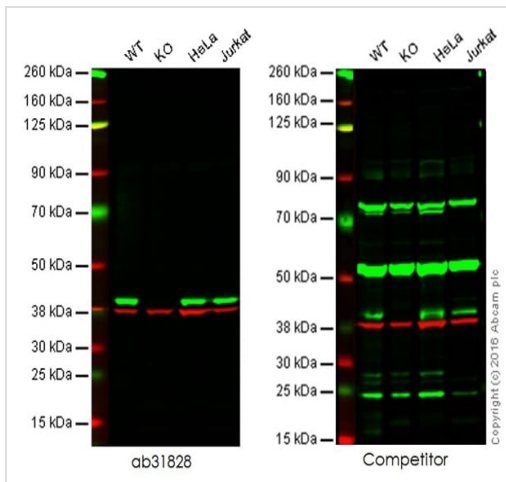
Lanes 1 - 4: Merged signal (red and green). Green - ab31828 observed at 40 kDa. Red - loading control, **ab181602**, observed at 37 kDa.

ab31828 was shown to specifically react with p38 when p38 knockout samples were used. Wild-type and p38 knockout samples were subjected to SDS-PAGE. ab31828 and **ab181602** (loading control to GAPDH) were diluted 1/1000 and 1/2000 respectively and incubated overnight at 4°C. Blots were developed with Goat anti-Mouse IgG H&L (IRDye® 800CW) preadsorbed (**ab216772**) and Goat Anti-Rabbit IgG H&L (IRDye® 680RD) preadsorbed (**ab216777**) secondary antibodies at 1/10,000 dilution for 1 h at room temperature before imaging.



Western blot - Anti-p38 delta/MAPK13 + p38 alpha/MAPK14 antibody [M138] (ab31828)

Western blot analysis of A431 cells serum starved overnight (lanes 1 & 3) or treated with pervanadate (1 mM) for 30 minutes (lanes 2 & 4). The blot was probed with anti-p38alpha (lanes 1 & 2) or anti-p38 (T180/Y182) (lanes 3-4). Lanes 5-7 shows a blot of A431 cells treated with pervanadate and probed with anti-p38 (T180/Y182) in the presence of no peptide (lane 5), phospho-ERK1 (T202/Y204) peptide (lane 6) or phospho-p38 (T180/Y182) peptide (lane 7).



Western blot - Anti-p38 delta/MAPK13 + p38 alpha/MAPK14 antibody [M138] (ab31828)

Lane 1: Wild-type HAP1 cell lysate (20 µg)

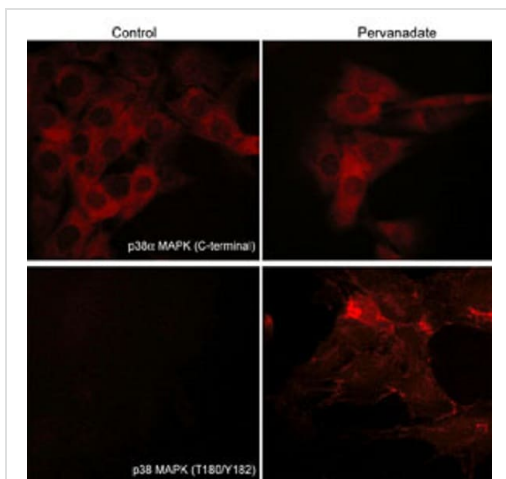
Lane 2: p38 knockout HAP1 cell lysate (20 µg)

Lane 3: HeLa cell lysate (20 µg)

Lane 4: Jurkat cell lysate (20 µg)

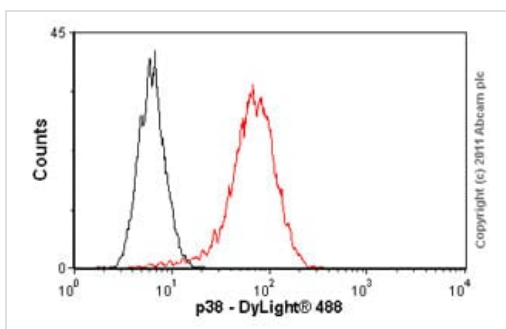
Lanes 1 - 4: Merged signal (red and green). Green - ab31828 observed at 40 kDa. Red - loading control, **ab8245**, observed at 37 kDa.

This western blot image is a comparison between ab31828 and a competitor's top cited rabbit polyclonal antibody.



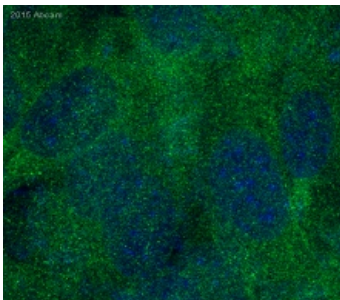
Immunocytochemistry/ Immunofluorescence - Anti-p38 delta/MAPK13 + p38 alpha/MAPK14 antibody [M138] (ab31828)

Immunocytochemical labeling of activated p38 MAPK in pervanadate-treated mouse with **ab31828**. The cells were labeled with mouse monoclonal p38α MAPK and p38 MAPK antibodies, then the antibodies were detected using appropriate secondary antibodies conjugated to Cy3.



Flow Cytometry (Intracellular) - Anti-p38 delta/MAPK13 + p38 alpha/MAPK14 antibody [M138] (ab31828)

Overlay histogram showing A431 cells stained with ab31828 (red line). The cells were fixed with methanol (5 min) and then permeabilized with 0.1% PBS-Tween for 20 min. The cells were then incubated in 1x PBS / 10% normal goat serum / 0.3M glycine to block non-specific protein-protein interactions followed by the antibody (**ab21828**, 1:100 dilution) for 30 min at 22°C. The secondary antibody used was DyLight® 488 goat anti-mouse IgG (H+L) (**ab96879**) at 1:500 dilution for 30 min at 22°C. Isotype control antibody (black line) was mouse IgG1 [ICIGG1] (**ab91353**, 2µg/1x10⁶ cells) used under the same conditions. Acquisition of >5,000 events was performed. This antibody gave a decreased signal in A431 cells fixed with 4% paraformaldehyde (10 min)/permeabilized in 0.1% PBS-Tween used under the same conditions.



Immunocytochemistry/ Immunofluorescence - Anti-p38 delta/MAPK13 + p38 alpha/MAPK14 antibody [M138] (ab31828)

This image is courtesy of an anonymous Abreview.

Immunocytochemical analysis of mouse embryo fibroblast cells (NIH-3T3), labelling p38 with ab31828. Sample fixed in paraformaldehyde and blocked with 1% Donkey Serum + 1% BSA + 0.1% Triton X-100, in PBS for 30 minutes at 22°C. Incubated with ab31828 diluted 1/500 in 1% Donkey Serum + 1% BSA + 0.1% Triton X for 1 hour at 22°C. Secondary antibody was a Donkey anti-Mouse polyclonal conjugated to Alexa Fluor® 488, diluted 1/500.

Please note: All products are "FOR RESEARCH USE ONLY. NOT FOR USE IN DIAGNOSTIC PROCEDURES"

Our Abpromise to you: Quality guaranteed and expert technical support

- Replacement or refund for products not performing as stated on the datasheet
- Valid for 12 months from date of delivery
- Response to your inquiry within 24 hours
- We provide support in Chinese, English, French, German, Japanese and Spanish
- Extensive multi-media technical resources to help you
- We investigate all quality concerns to ensure our products perform to the highest standards

If the product does not perform as described on this datasheet, we will offer a refund or replacement. For full details of the Abpromise, please visit <https://www.abcam.co.jp/abpromise> or contact our technical team.

Terms and conditions

- Guarantee only valid for products bought direct from Abcam or one of our authorized distributors