

Anti-P2X1 antibody ab74058

1 References [画像数 2](#)

製品の概要

製品名	Anti-P2X1 antibody
製品の詳細	Rabbit polyclonal to P2X1
由来種	Rabbit
特異性	From Jan 2024, QC testing of replenishment batches of this polyclonal changed. All tested and expected application and reactive species combinations are still covered by our Abcam product promise. However, we no longer test all applications. For more information on a specific batch, please contact our Scientific Support who will be happy to help.
アプリケーション	適用あり: IHC-P, WB
種交差性	交差種: Human
免疫原	Synthetic peptide corresponding to Human P2X1 aa 350 to the C-terminus (C terminal) conjugated to keyhole limpet haemocyanin. (Peptide available as ab91609)
ポジティブ・コントロール	This antibody gave a positive signal in the following human tissue lysates: Brain, Heart, Testis
特記事項	<p>The Life Science industry has been in the grips of a reproducibility crisis for a number of years. Abcam is leading the way in addressing this with our range of recombinant monoclonal antibodies and knockout edited cell lines for gold-standard validation. Please check that this product meets your needs before purchasing.</p> <p>If you have any questions, special requirements or concerns, please send us an inquiry and/or contact our Support team ahead of purchase. Recommended alternatives for this product can be found below, along with publications, customer reviews and Q&As</p>

製品の特性

製品の状態	Liquid
保存方法	Shipped at 4°C. Store at +4°C short term (1-2 weeks). Upon delivery aliquot. Store at -20°C or -80°C. Avoid freeze / thaw cycle.
バッファー	<p>pH: 7.40</p> <p>Preservative: 0.02% Sodium azide</p> <p>Constituent: PBS</p> <p>Batches of this product that have a concentration < 1mg/ml may have BSA added as a stabilising agent. If you would like information about the formulation of a specific lot, please contact our</p>

scientific support team who will be happy to help.

精製度

Immunogen affinity purified

ポリ/モノ

ポリクローナル

アイソタイプ

IgG

アプリケーション

The Abpromise guarantee Abpromise保証は、次のテスト済みアプリケーションにおけるab74058の使用に適用されます
アプリケーションノートには、推奨の開始希釈率がありますが、適切な希釈率につきましてはご検討ください。

アプリケーション	Abreviews	特記事項
IHC-P		
WB		

追加情報

IHC-P: Use at a concentration of 5 µg/ml.

WB: Use at a concentration of 1 µg/ml. Detects a band of approximately 50 kDa (predicted molecular weight: 45 kDa).

Not yet tested in other applications.

Optimal dilutions/concentrations should be determined by the end user.

ターゲット情報

機能

Ligand-gated ion channel with relatively high calcium permeability. Binding to ATP mediates synaptic transmission between neurons and from neurons to smooth muscle. Seems to be linked to apoptosis, by increasing the intracellular concentration of calcium in the presence of ATP, leading to programmed cell death.

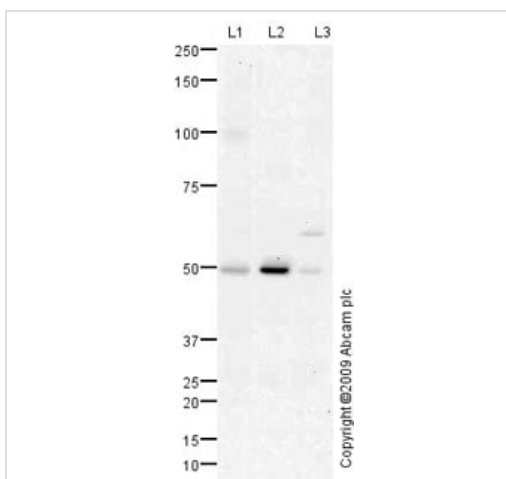
配列類似性

Belongs to the P2X receptor family.

細胞内局在

Membrane.

画像



Western blot - Anti-P2X1 antibody (ab74058)

All lanes : Anti-P2X1 antibody (ab74058) at 1 µg/ml

Lane 1 : Human brain tissue lysate - total protein ([ab29466](#))

Lane 2 : Human heart tissue lysate - total protein ([ab29431](#))

Lane 3 : Human testis tissue lysate - total protein ([ab30257](#))

Lysates/proteins at 10 µg per lane.

Secondary

All lanes : Goat polyclonal to Rabbit IgG - H&L - Pre-Adsorbed (HRP) at 1/3000 dilution

Developed using the ECL technique.

Performed under reducing conditions.

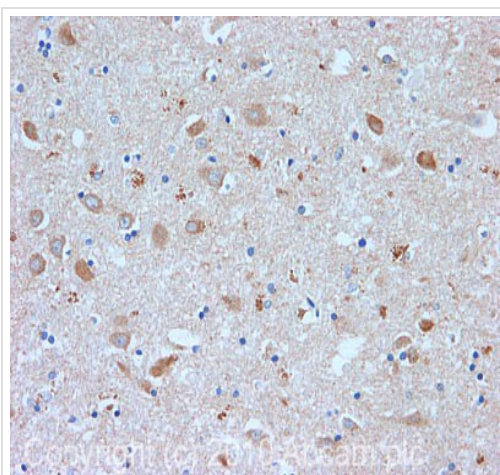
Predicted band size: 45 kDa

Observed band size: 50 kDa

Additional bands at: 58 kDa. We are unsure as to the identity of these extra bands.

Exposure time: 2 minutes

P2X1 contains a number of potential glycosylation sites (SwissProt) which may explain its migration at a higher molecular weight than predicted. Furthermore, the 50 kDa band observed is comparable to the molecular weight seen with other commercially available antibodies to P2X1.



Immunohistochemistry (Formalin/PFA-fixed paraffin-embedded sections) - Anti-P2X1 antibody (ab74058)

IHC image of ab74058 staining in Human Hippocampus formalin fixed paraffin embedded tissue section, performed on a Leica Bond™ system using the standard protocol F. The section was pre-treated using heat mediated antigen retrieval with sodium citrate buffer (pH6, epitope retrieval solution 1) for 20 mins. The section was then incubated with ab74058, 5µg/ml, for 15 mins at room temperature and detected using an HRP conjugated compact polymer system. DAB was used as the chromogen. The section was then counterstained with haematoxylin and mounted with DPX.

For other IHC staining systems (automated and non-automated) customers should optimize variable parameters such as antigen retrieval conditions, primary antibody concentration and antibody incubation times.

Please note: All products are "FOR RESEARCH USE ONLY. NOT FOR USE IN DIAGNOSTIC PROCEDURES"

Our Abpromise to you: Quality guaranteed and expert technical support

- Replacement or refund for products not performing as stated on the datasheet
- Valid for 12 months from date of delivery
- Response to your inquiry within 24 hours
- We provide support in Chinese, English, French, German, Japanese and Spanish
- Extensive multi-media technical resources to help you
- We investigate all quality concerns to ensure our products perform to the highest standards

If the product does not perform as described on this datasheet, we will offer a refund or replacement. For full details of the Abpromise, please visit <https://www.abcam.co.jp/abpromise> or contact our technical team.

Terms and conditions

- Guarantee only valid for products bought direct from Abcam or one of our authorized distributors