

### Anti-p21 (phospho T145) antibody ab47300

★★★★★ [1 Abreviews](#) [14 References](#) [画像数 3](#)

#### 製品の概要

製品名	Anti-p21 (phospho T145) antibody
製品の詳細	Rabbit polyclonal to p21 (phospho T145)
由来種	Rabbit
アプリケーション	<b>適用あり:</b> ICC/IF, WB, IHC-P
種交差性	<b>交差種:</b> Human
免疫原	Synthetic peptide corresponding to Human p21 aa 100-200 (phospho T145). Database link: <a href="#">P38936</a>
ポジティブ・コントロール	Human breast carcinoma tissue and EGF treated HeLa cell extracts
特記事項	<p>p21Cip1 (phospho-Thr145) antibody detects endogenous levels of p21Cip1 only when phosphorylated at threonine 145.</p> <p>The Life Science industry has been in the grips of a reproducibility crisis for a number of years. Abcam is leading the way in addressing this with our range of recombinant monoclonal antibodies and knockout edited cell lines for gold-standard validation. Please check that this product meets your needs before purchasing.</p> <p>If you have any questions, special requirements or concerns, please send us an inquiry and/or contact our Support team ahead of purchase. Recommended alternatives for this product can be found below, along with publications, customer reviews and Q&amp;As</p>

#### 製品の特性

製品の状態	Liquid
保存方法	Shipped at 4°C. Store at -20°C. Stable for 12 months at -20°C.
バッファー	pH: 7.40 Preservative: 0.02% Sodium azide Constituents: PBS, 50% Glycerol, 0.87% Sodium chloride
精製度	Immunogen affinity purified
特記事項 (精製)	The antibody was purified using epitope-specific phosphopeptide. The antibody against non-phosphopeptide was removed by chromatography using non-phosphopeptide corresponding to the phosphorylation site.

一次抗体 備考	p21Cip1 (phospho-Thr145) antibody detects endogenous levels of p21Cip1 only when phosphorylated at threonine 145.
ポリモノ	ポリクローナル
アイソタイプ	IgG

アプリケーション

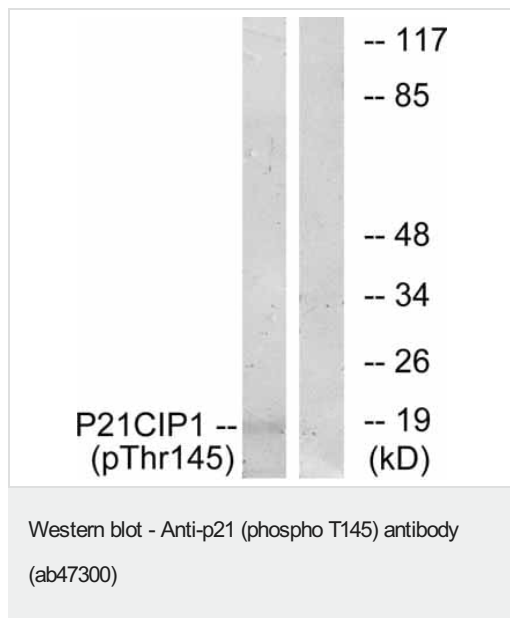
The Abpromise guarantee      Abpromise保証は、次のテスト済みアプリケーションにおけるab47300の使用に適用されます  
 アプリケーションノートには、推奨の開始希釈率がありますが、適切な希釈率につきましてはご検討ください。

アプリケーション	Abreviews	特記事項
ICC/IF		Use a concentration of 1 µg/ml.
WB		1/500 - 1/1000. Detects a band of approximately 32 kDa (predicted molecular weight: 18 kDa).
IHC-P	★★★★★ (1)	Use at an assay dependent concentration.

ターゲット情報

機能	May be the important intermediate by which p53/TP53 mediates its role as an inhibitor of cellular proliferation in response to DNA damage. Binds to and inhibits cyclin-dependent kinase activity, preventing phosphorylation of critical cyclin-dependent kinase substrates and blocking cell cycle progression. Functions in the nuclear localization and assembly of cyclin D-CDK4 complex and promotes its kinase activity towards RB1. At higher stoichiometric ratios, inhibits the kinase activity of the cyclin D-CDK4 complex.
組織特異性	Expressed in all adult human tissues, with 5-fold lower levels observed in the brain.
配列類似性	Belongs to the CDI family.
ドメイン	The PIP-box K+4 motif mediates both the interaction with PCNA and the recruitment of the DCX(DTL) complex: while the PIP-box interacts with PCNA, the presence of the K+4 submotif, recruits the DCX(DTL) complex, leading to its ubiquitination. The C-terminal is required for nuclear localization of the cyclin D-CDK4 complex.
翻訳後修飾	Phosphorylation of Thr-145 by Akt or of Ser-146 by PKC impairs binding to PCNA. Phosphorylation at Ser-114 by GSK3-beta enhances ubiquitination by the DCX(DTL) complex. Ubiquitinated by MKRN1; leading to polyubiquitination and 26S proteasome-dependent degradation. Ubiquitinated by the DCX(DTL) complex, also named CRL4(CDT2) complex, leading to its degradation during S phase or following UV irradiation. Ubiquitination by the DCX(DTL) complex is essential to control replication licensing and is PCNA-dependent: interacts with PCNA via its PIP-box, while the presence of the containing the 'K+4' motif in the PIP box, recruit the DCX(DTL) complex, leading to its degradation.
細胞内局在	Cytoplasm. Nucleus.

画像

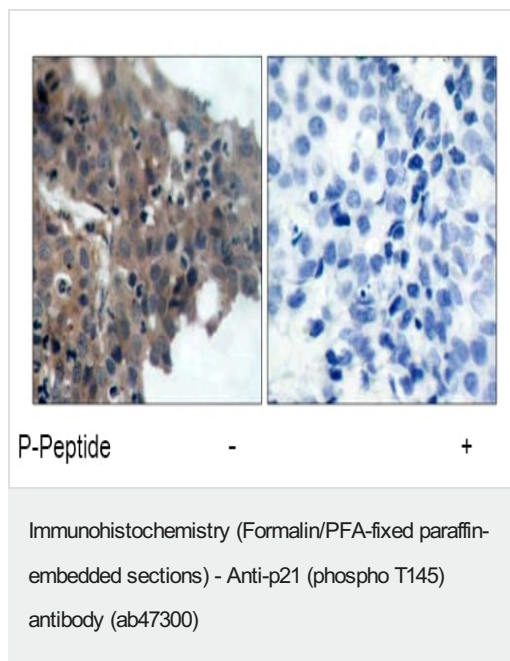


**All lanes :** Anti-p21 (phospho T145) antibody (ab47300)

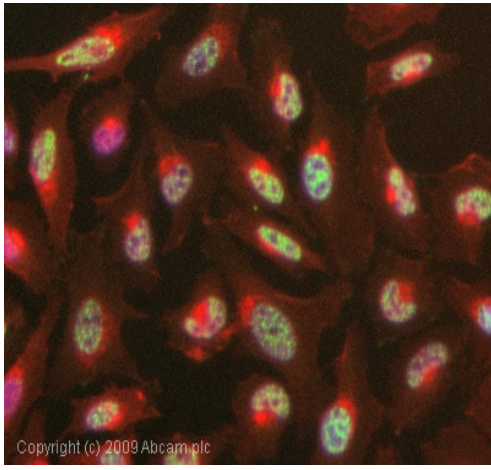
**Lane 1 :** EGF treated HeLa cells

**Lane 2 :** HeLa cells

**Predicted band size:** 18 kDa



ab47300 staining human breast carcinoma tissue by IHC-P (left hand panel). The right hand panel shows staining in the presence of phospho-peptide.



Immunocytochemistry/ Immunofluorescence - Anti-p21 (phospho T145) antibody (ab47300)

ICC/IF image of ab47300 stained HeLa cells. The cells were 4% PFA fixed (10 min) and then incubated in 1%BSA / 10% normal goat serum / 0.3M glycine in 0.1% PBS-Tween for 1h to permeabilise the cells and block non-specific protein-protein interactions. The cells were then incubated with the antibody (ab47300, 1µg/ml) overnight at +4°C. The secondary antibody (green) was Alexa Fluor® 488 goat anti-rabbit IgG (H+L) used at a 1/1000 dilution for 1h. Alexa Fluor® 594 WGA was used to label plasma membranes (red) at a 1/200 dilution for 1h. DAPI was used to stain the cell nuclei (blue) at a concentration of 1.43µM.

**Please note:** All products are "FOR RESEARCH USE ONLY. NOT FOR USE IN DIAGNOSTIC PROCEDURES"

### Our Abpromise to you: Quality guaranteed and expert technical support

---

- Replacement or refund for products not performing as stated on the datasheet
- Valid for 12 months from date of delivery
- Response to your inquiry within 24 hours
- We provide support in Chinese, English, French, German, Japanese and Spanish
- Extensive multi-media technical resources to help you
- We investigate all quality concerns to ensure our products perform to the highest standards

If the product does not perform as described on this datasheet, we will offer a refund or replacement. For full details of the Abpromise, please visit <https://www.abcam.co.jp/abpromise> or contact our technical team.

### Terms and conditions

---

- Guarantee only valid for products bought direct from Abcam or one of our authorized distributors