


Anti-Otx1 antibody ab25985

★★★★☆ [4 Abreviews](#) [7 References](#) [画像数 2](#)

製品の概要

製品名	Anti-Otx1 antibody
製品の詳細	Rabbit polyclonal to Otx1
由来種	Rabbit
特異性	We have not been able to test Rabbit polyclonal to Otx1 (ab25985) in Western Blot due to difficulties in accessing the appropriate lysates. We would appreciate any feedback on this antibody.
アプリケーション	適用あり: IHC-P, WB
種交差性	交差種: Mouse, Human 交差が予測される動物種: Rat, Chimpanzee, Gorilla, Catfish 
免疫原	Synthetic peptide conjugated to KLH derived from within residues 100 - 200 of Mouse Otx1. Immunogen の所有権に関して
特記事項	<p>The Life Science industry has been in the grips of a reproducibility crisis for a number of years. Abcam is leading the way in addressing this with our range of recombinant monoclonal antibodies and knockout edited cell lines for gold-standard validation. Please check that this product meets your needs before purchasing.</p> <p>If you have any questions, special requirements or concerns, please send us an inquiry and/or contact our Support team ahead of purchase. Recommended alternatives for this product can be found below, along with publications, customer reviews and Q&As</p>

製品の特性

製品の状態	Liquid
保存方法	Shipped at 4°C. Store at +4°C short term (1-2 weeks). Upon delivery aliquot. Store at -20°C or -80°C. Avoid freeze / thaw cycle.
バッファー	pH: 7.40 Preservative: 0.02% Sodium azide Constituent: PBS
	Batches of this product that have a concentration < 1mg/ml may have BSA added as a stabilising agent. If you would like information about the formulation of a specific lot, please contact our scientific support team who will be happy to help.

精製度	Immunogen affinity purified
ポリ/モノ	ポリクローナル
アイソタイプ	IgG

アプリケーション

The Abpromise guarantee

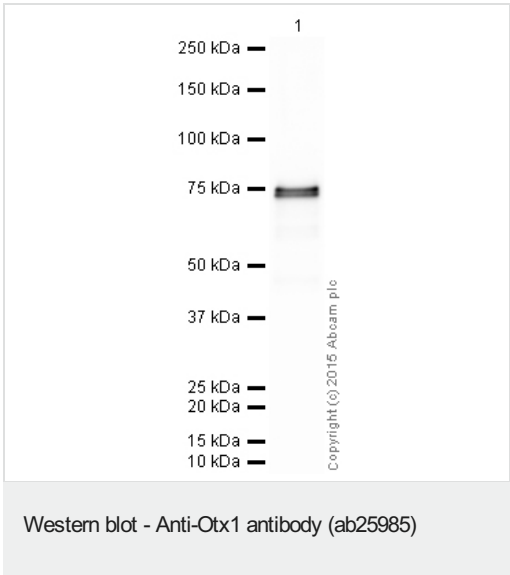
Abpromise保証は、次のテスト済みアプリケーションにおけるab25985の使用に適用されます
 アプリケーションノートには、推奨の開始希釈率がありますが、適切な希釈率につきましてはご確認ください。

アプリケーション	Abreviews	特記事項
IHC-P	★★★★★ (3)	Use at an assay dependent concentration.
WB		Use at an assay dependent concentration. Detects a band of approximately 75 kDa (predicted molecular weight: 37 kDa). This application has only been tested on recombinant protein.

ターゲット情報

機能	Probably plays a role in the development of the brain and the sense organs. Can bind to the BCD target sequence (BTS): 5'-TCTAATCCC-3'.
組織特異性	Expressed in brain.
配列類似性	Belongs to the paired homeobox family. Bicoid subfamily. Contains 1 homeobox DNA-binding domain.
発生段階	Embryo.
細胞内局在	Nucleus.

画像



Anti-Otx1 antibody (ab25985) at 1 µg/ml + OTX1 (Human) -
 Recombinant Protein at 0.1 µg

Secondary
 Goat Anti-Rabbit IgG H&L (HRP) preadsorbed at 1/50000 dilution

Developed using the ECL technique.

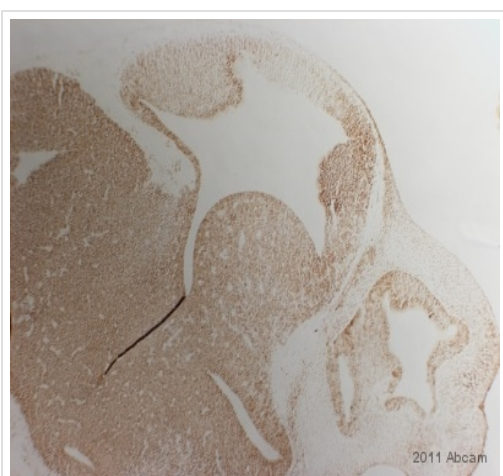
Performed under reducing conditions.

Predicted band size: 37 kDa
Observed band size: 75 kDa

Exposure time: 1 minute

This blot was produced using a 4-12% Bis-tris gel under the MOPS buffer system. The gel was run at 200V for 50 minutes before being transferred onto a Nitrocellulose membrane at 30V for 70 minutes. The membrane was then blocked for an hour using 2% Bovine Serum Albumin before being incubated with ab25985 overnight at 4°C. Antibody binding was detected using an anti-rabbit antibody conjugated to HRP, and visualised using ECL development solution **ab133406**.

Ab25985 recognizes the full length tagged recombinant protein which has an expected molecular weight of 75 kDa.



IHC-P image of Otx1 antibody (ab25985) on E11.5 mouse embryo sections. The sections were fixed in Paraformaldehyde and underwent heat mediated antigen retrieval using EDTA. These sections were then blocked in serum for 1 hour, before the Otx1 antibody was added at 1:100 dilution and left overnight at 4°C.

Immunohistochemistry (Formalin/PFA-fixed paraffin-embedded sections) - Anti-Otx1 antibody (ab25985)

This image is taken from an anonymous abreview

Please note: All products are "FOR RESEARCH USE ONLY. NOT FOR USE IN DIAGNOSTIC PROCEDURES"

Our Abpromise to you: Quality guaranteed and expert technical support

- Replacement or refund for products not performing as stated on the datasheet
- Valid for 12 months from date of delivery
- Response to your inquiry within 24 hours
- We provide support in Chinese, English, French, German, Japanese and Spanish
- Extensive multi-media technical resources to help you
- We investigate all quality concerns to ensure our products perform to the highest standards

If the product does not perform as described on this datasheet, we will offer a refund or replacement. For full details of the Abpromise, please visit <https://www.abcam.co.jp/abpromise> or contact our technical team.

Terms and conditions

- Guarantee only valid for products bought direct from Abcam or one of our authorized distributors