

Anti-Osteopontin antibody ab8448

★★★★☆ [14 Abreviews](#) [406 References](#) [画像数 3](#)

製品の概要

製品名	Anti-Osteopontin antibody
製品の詳細	Rabbit polyclonal to Osteopontin
由来種	Rabbit
アプリケーション	適用あり: IHC-P, ICC/IF 適用なし: WB
種交差性	交差種: Human
免疫原	Synthetic peptide corresponding to Human Osteopontin aa 170-183 conjugated to keyhole limpet haemocyanin. Sequence: CKSKKFRRPDIQYPD Database link: P10451 (Peptide available as ab9078)

 [Run BLAST with](#)

 [Run BLAST with](#)

特記事項

The Life Science industry has been in the grips of a reproducibility crisis for a number of years. Abcam is leading the way in addressing this with our range of recombinant monoclonal antibodies and knockout edited cell lines for gold-standard validation. Please check that this product meets your needs before purchasing.

If you have any questions, special requirements or concerns, please send us an inquiry and/or contact our Support team ahead of purchase. Recommended alternatives for this product can be found below, along with publications, customer reviews and Q&As

製品の特性

製品の状態	Liquid
保存方法	Shipped at 4°C. Upon delivery aliquot and store at -20°C or -80°C. Avoid repeated freeze / thaw cycles.
バッファー	Preservative: 0.1% Sodium azide Constituents: 0.42% Potassium phosphate, 0.87% Sodium chloride
精製度	Whole antiserum
ポリ/モノ	ポリクローナル

アプリケーション

The Abpromise guarantee **Abpromise保証は、次のテスト済みアプリケーションにおけるab8448の使用に適用されます**
 アプリケーションノートには、推奨の開始希釈率がありますが、適切な希釈率につきましてはご確認ください。

アプリケーション	Abreviews	特記事項
IHC-P	★★★★★ (6)	1/100 - 1/300.
ICC/IF		1/1000.

追加情報

Is unsuitable for WB.

ターゲット情報

機能

Binds tightly to hydroxyapatite. Appears to form an integral part of the mineralized matrix.
 Probably important to cell-matrix interaction.
 Acts as a cytokine involved in enhancing production of interferon-gamma and interleukin-12 and reducing production of interleukin-10 and is essential in the pathway that leads to type I immunity.

組織特異性

Bone. Found in plasma.

配列類似性

Belongs to the osteopontin family.

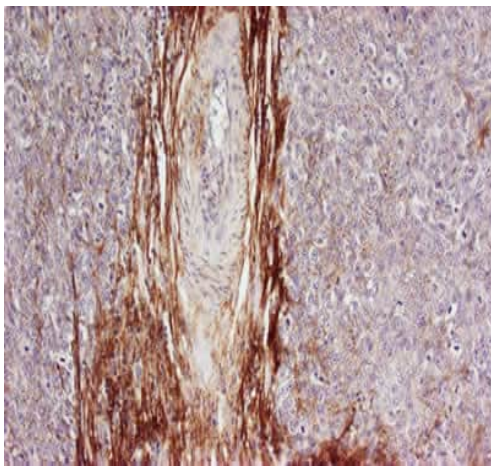
翻訳後修飾

Extensively phosphorylated on clustered serine residues.
 N- and O-glycosylated.
 Phosphorylation sites are present in the extracellular medium.

細胞内局在

Secreted.

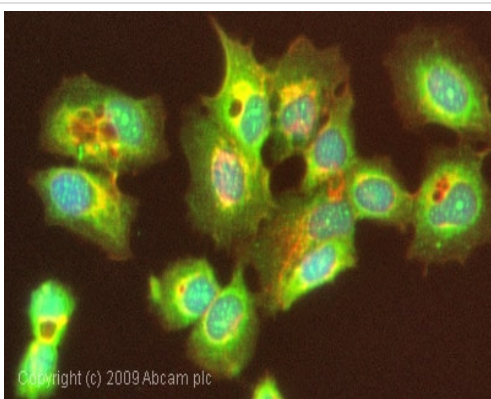
画像



Immunohistochemistry (Formalin/PFA-fixed paraffin-embedded sections) - Anti-Osteopontin antibody (ab8448)

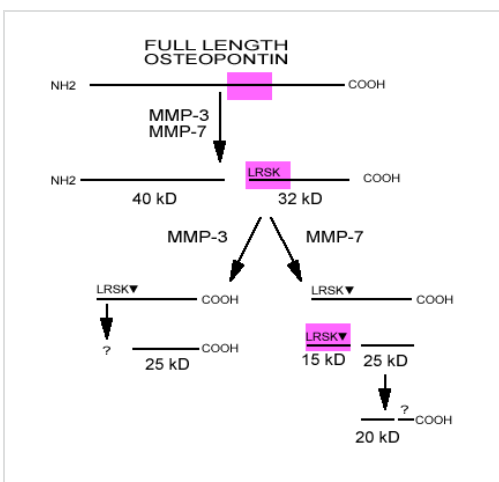
Human Breast tumour section. Osteopontin is a normal component of elastic fibers in the breast (shown heavily stained in this section). There is also weak staining of the extracellular matrix. Osteopontin is not believed to be expressed inside breast tumour cells, and there is no staining in the intracellular region of the breast cells in this section.

Osteopontin antibody (ab8448) used at 1:100-1:300. No antigen retrieval is required.



Immunocytochemistry/ Immunofluorescence - Anti-Osteopontin antibody (ab8448)

ICC/IF image of ab8448 stained MCF7 cells. The cells were 4% PFA fixed (10 min) and then incubated in 1%BSA / 10% normal goat serum / 0.3M glycine in 0.1% PBS-Tween for 1h to permeabilise the cells and block non-specific protein-protein interactions. The cells were then incubated with the antibody (ab8448, 1/1000 dilution) overnight at +4°C. The secondary antibody (green) was Alexa Fluor® 488 goat anti-rabbit IgG (H+L) used at a 1/1000 dilution for 1h. Alexa Fluor® 594 WGA was used to label plasma membranes (red) at a 1/200 dilution for 1h. DAPI was used to stain the cell nuclei (blue) at a concentration of 1.43µM.



Schematic Diagram - Anti-Osteopontin antibody (ab8448)

This image is courtesy of Agnihotri et al, JBC 2001

OPN is cleaved by MMP to yield 2 fragments, which migrate at 40kD(N terminal) and 32kD (C terminal). The C terminal fragment can undergo further cleavage by both of these MMPs (see Agnihotri et al, JBC 2001 for further details). The epitope recognised by ab8448 is shown in violet. This antibody detects the full length OPN and the 32kD fragment. It does not recognise the 40kD fragment.

Please note: All products are "FOR RESEARCH USE ONLY. NOT FOR USE IN DIAGNOSTIC PROCEDURES"

Our Abpromise to you: Quality guaranteed and expert technical support

- Replacement or refund for products not performing as stated on the datasheet
- Valid for 12 months from date of delivery
- Response to your inquiry within 24 hours

- We provide support in Chinese, English, French, German, Japanese and Spanish
- Extensive multi-media technical resources to help you
- We investigate all quality concerns to ensure our products perform to the highest standards

If the product does not perform as described on this datasheet, we will offer a refund or replacement. For full details of the Abpromise, please visit <https://www.abcam.co.jp/abpromise> or contact our technical team.

Terms and conditions

- Guarantee only valid for products bought direct from Abcam or one of our authorized distributors