

Anti-Osteopontin antibody ab63856

[1 Abreviews](#) [36 References](#) [画像数 3](#)

製品の概要

| | |
|--------------|---|
| 製品名 | Anti-Osteopontin antibody |
| 製品の詳細 | Rabbit polyclonal to Osteopontin |
| 由来種 | Rabbit |
| 特異性 | From Jan 2024, QC testing of replenishment batches of this polyclonal changed. All tested and expected application and reactive species combinations are still covered by our Abcam product promise. However, we no longer test all applications. For more information on a specific batch, please contact our Scientific Support who will be happy to help. |
| アプリケーション | 適用あり: ICC/IF, IHC-P, WB |
| 種交差性 | 交差種: Mouse, Rat, Human |
| 免疫原 | Synthetic peptide corresponding to Human Osteopontin aa 150-250 conjugated to keyhole limpet haemocyanin. (Peptide available as ab65665 , ab9078) |
| ポジティブ・コントロール | This antibody gave a positive signal in the following lysates: Rat Skeletal Muscle Tissue Rat Brain Tissue HL60 Whole Cell Mouse Brain Tissue Rat Liver Tissue (data not shown) Mouse Liver Tissue (data not shown) Human Liver Tissue (data not shown) ICC/IF: HepG2 cells. |
| 特記事項 | <p>The Life Science industry has been in the grips of a reproducibility crisis for a number of years. Abcam is leading the way in addressing this with our range of recombinant monoclonal antibodies and knockout edited cell lines for gold-standard validation. Please check that this product meets your needs before purchasing.</p> <p>If you have any questions, special requirements or concerns, please send us an inquiry and/or contact our Support team ahead of purchase. Recommended alternatives for this product can be found below, along with publications, customer reviews and Q&As</p> |

製品の特性

| | |
|-------|--|
| 製品の状態 | Liquid |
| 保存方法 | Shipped at 4°C. Store at +4°C short term (1-2 weeks). Upon delivery aliquot. Store at -20°C or -80°C. Avoid freeze / thaw cycle. |
| バッファー | pH: 7.40 Preservative: 0.02% Sodium azide Constituent: PBS |

Batches of this product that have a concentration < 1mg/ml may have BSA added as a stabilising agent. If you would like information about the formulation of a specific lot, please contact our scientific support team who will be happy to help.

| | |
|--------|-----------------------------|
| 精製度 | Immunogen affinity purified |
| ポリモノ | ポリクローナル |
| アイソタイプ | IgG |

アプリケーション

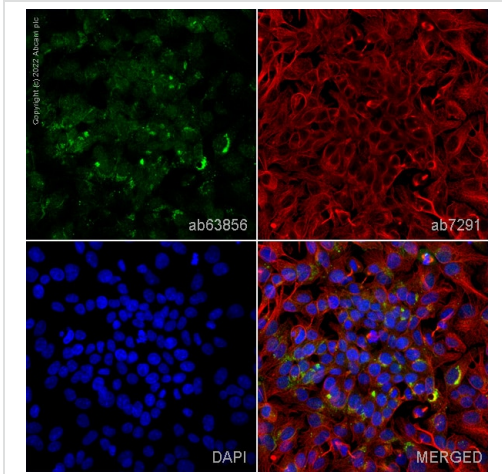
The Abpromise guarantee **Abpromise保証は、次のテスト済みアプリケーションにおけるab63856の使用に適用されます**
アプリケーションノートには、推奨の開始希釈率がありますが、適切な希釈率につきましてはご検討ください。

| アプリケーション | Abreviews | 特記事項 |
|----------|-----------|---|
| ICC/IF | | Use a concentration of 5 µg/ml. |
| IHC-P | | Use a concentration of 5 µg/ml. Perform heat mediated antigen retrieval before commencing with IHC staining protocol. |
| WB | | Use a concentration of 1 µg/ml. Detects a band of approximately 32 kDa (predicted molecular weight: 32 kDa). |

ターゲット情報

| | |
|-------|---|
| 機能 | Binds tightly to hydroxyapatite. Appears to form an integral part of the mineralized matrix. Probably important to cell-matrix interaction. Acts as a cytokine involved in enhancing production of interferon-gamma and interleukin-12 and reducing production of interleukin-10 and is essential in the pathway that leads to type I immunity. |
| 組織特異性 | Bone. Found in plasma. |
| 配列類似性 | Belongs to the osteopontin family. |
| 翻訳後修飾 | Extensively phosphorylated on clustered serine residues. N- and O-glycosylated. Phosphorylation sites are present in the extracellular medium. |
| 細胞内局在 | Secreted. |

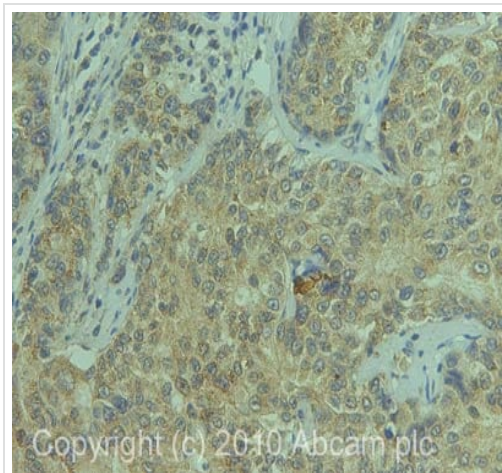
画像



Immunocytochemistry/ Immunofluorescence - Anti-Osteopontin antibody (ab63856)

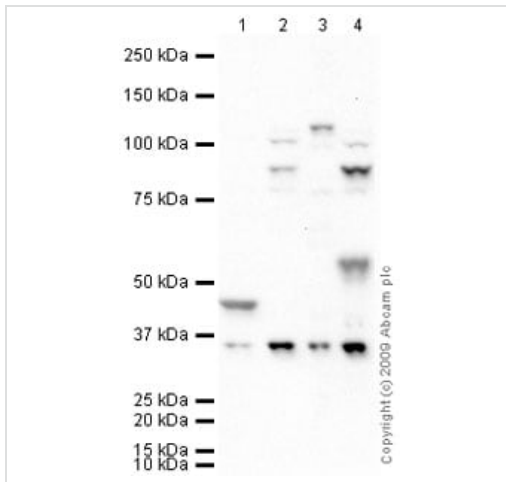
ab63856 staining Osteopontin in HepG2 cells. The cells were fixed with 4% paraformaldehyde (10 min), permeabilized with 0.1% PBS-Triton X-100 for 5 minutes and then blocked with 1% BSA/10% normal goat serum/0.3M glycine in 0.1%PBS-Tween for 1h. The cells were then incubated overnight at 4°C with ab63856 at 1µg/ml and **ab7291**, Mouse monoclonal [DM1A] to alpha Tubulin - Loading Control. Cells were then incubated with **ab150081**, Goat polyclonal Secondary Antibody to Rabbit IgG - H&L (Alexa Fluor® 488), pre-adsorbed at 1/1000 dilution (shown in green) and **ab150120**, Goat polyclonal Secondary Antibody to Mouse IgG - H&L (Alexa Fluor® 594), pre-adsorbed at 1/1000 dilution (shown in pseudocolour red). Nuclear DNA was labelled with DAPI (shown in blue).

Image was acquired with a high-content analyser (Operetta CLS, Perkin Elmer) and a maximum intensity projection of confocal sections is shown.



Immunohistochemistry (Formalin/PFA-fixed paraffin-embedded sections) - Anti-Osteopontin antibody (ab63856)

IHC image of Osteopontin staining in human breast carcinoma formalin fixed paraffin embedded tissue section, performed on a Leica Bond™ system using the standard protocol F. The section was pre-treated using heat mediated antigen retrieval with sodium citrate buffer (pH6, epitope retrieval solution 1) for 20 mins. The section was then incubated with ab63856, 5µg/ml, for 15 mins at room temperature and detected using an HRP conjugated compact polymer system. DAB was used as the chromogen. The section was then counterstained with haematoxylin and mounted with DPX.



Western blot - Anti-Osteopontin antibody (ab63856)

All lanes : Anti-Osteopontin antibody (ab63856) at 1 µg/ml

Lane 1 : Skeletal Muscle (Rat) Tissue Lysate - normal tissue
(**ab29376**)

Lane 2 : Brain (Rat) Tissue Lysate - normal tissue

Lane 3 : HL60 (Human promyelocytic leukemia cell line) Whole Cell Lysate (Human) Whole Cell Lysate

Lane 4 : Brain (Mouse) Tissue Lysate

Lysates/proteins at 10 µg per lane.

Secondary

All lanes : Goat polyclonal to Rabbit IgG - H&L - Pre-Adsorbed (HRP) at 1/3000 dilution

Performed under reducing conditions.

Predicted band size: 32 kDa

Observed band size: 32 kDa

Additional bands at: 100 kDa, 42 kDa, 56 kDa, 88 kDa. We are unsure as to the identity of these extra bands.

Please note: All products are "FOR RESEARCH USE ONLY. NOT FOR USE IN DIAGNOSTIC PROCEDURES"

Our Abpromise to you: Quality guaranteed and expert technical support

- Replacement or refund for products not performing as stated on the datasheet
- Valid for 12 months from date of delivery
- Response to your inquiry within 24 hours
- We provide support in Chinese, English, French, German, Japanese and Spanish
- Extensive multi-media technical resources to help you
- We investigate all quality concerns to ensure our products perform to the highest standards

If the product does not perform as described on this datasheet, we will offer a refund or replacement. For full details of the Abpromise, please visit <https://www.abcam.co.jp/abpromise> or contact our technical team.

Terms and conditions

- Guarantee only valid for products bought direct from Abcam or one of our authorized distributors