

### Anti-ospC antibody ab106083

画像数 1

#### 製品の概要

---

製品名	Anti-ospC antibody
製品の詳細	Rabbit polyclonal to ospC
由来種	Rabbit
特異性	cross-reactivity with ospC from <i>Borrelia burgdorferi</i> , <i>afzelii</i> , and <i>valaisiana</i> sources based on 100% homology with the immunizing sequence. Partial reactivity is expected against <i>B. japonica</i> and <i>americana</i> sources based on 94% homology
アプリケーション	<b>適用あり:</b> WB
種交差性	<b>交差種:</b> <i>Borrelia burgdorferi</i>
免疫原	Fusion protein corresponding to ospC. Database link: <a href="#">Q07337</a>
ポジティブ・コントロール	<i>Borrelia burgdorferi</i> ospC protein.
特記事項	<p>The Life Science industry has been in the grips of a reproducibility crisis for a number of years. Abcam is leading the way in addressing this with our range of recombinant monoclonal antibodies and knockout edited cell lines for gold-standard validation. Please check that this product meets your needs before purchasing.</p> <p>If you have any questions, special requirements or concerns, please send us an inquiry and/or contact our Support team ahead of purchase. Recommended alternatives for this product can be found below, along with publications, customer reviews and Q&amp;As</p>

#### 製品の特性

---

製品の状態	Liquid
保存方法	Shipped at 4°C. Upon delivery aliquot. Store at -20°C or -80°C. Avoid freeze / thaw cycle.
バッファー	Preservative: 0.01% Sodium azide Constituents: 0.42% Potassium phosphate, 0.88% Sodium chloride
精製度	Protein A purified
特記事項(精製)	ab106083 is cross-adsorbed against MBP from monospecific antiserum by chromatography.
ポリモノ	ポリクローナル
アイソタイプ	IgG

## アプリケーション

**The Abpromise guarantee** Abpromise保証は、次のテスト済みアプリケーションにおけるab106083の使用に適用されます  
アプリケーションノートには、推奨の開始希釈率がありますが、適切な希釈率につきましてはご検討ください。

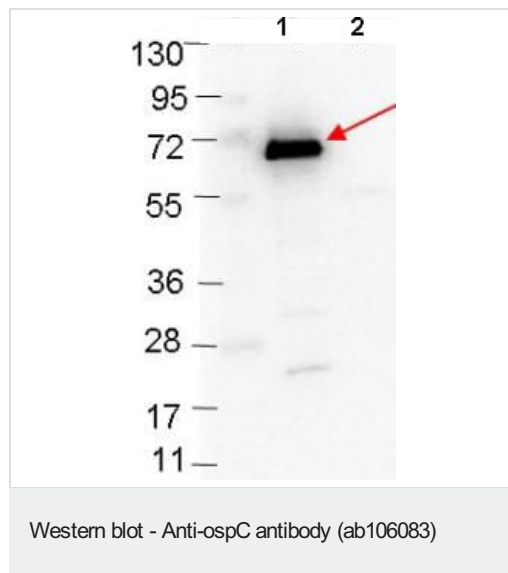
アプリケーション	Abreviews	特記事項
WB		1/1000. Predicted molecular weight: 22 kDa.

## ターゲット情報

**関連性** Outer Surface Protein C, or ospC, is a 20.7 kDa immunogenic protein on the outer surface of the spirochete *Borrelia burgdorferi*. Its function is not known, but it is located with lipid-anchoring sites on the outer cell membrane.

**細胞内局在** Cell outer membrane; Lipid-anchor.

## 画像



**All lanes** : Anti-ospC antibody (ab106083) at 1/1000 dilution

**Lane 1** : MBP-ospC fusion protein

**Lane 2** : MBP alone

Lysates/proteins at 0.1 µg per lane.

**Secondary**

**All lanes** : Goat-anti-Rabbit HRP at 1/40000 dilution

**Predicted band size:** 22 kDa

4-20% gel.

**Please note:** All products are "FOR RESEARCH USE ONLY. NOT FOR USE IN DIAGNOSTIC PROCEDURES"

## Our Abpromise to you: Quality guaranteed and expert technical support

- Replacement or refund for products not performing as stated on the datasheet
- Valid for 12 months from date of delivery
- Response to your inquiry within 24 hours
- We provide support in Chinese, English, French, German, Japanese and Spanish
- Extensive multi-media technical resources to help you

- We investigate all quality concerns to ensure our products perform to the highest standards

If the product does not perform as described on this datasheet, we will offer a refund or replacement. For full details of the Abpromise, please visit <https://www.abcam.co.jp/abpromise> or contact our technical team.

### **Terms and conditions**

---

- Guarantee only valid for products bought direct from Abcam or one of our authorized distributors