

Anti-Orexin B antibody [MM0501-5G21] ab89888

画像数 1

製品の概要

製品名	Anti-Orexin B antibody [MM0501-5G21]
製品の詳細	Mouse monoclonal [MM0501-5G21] to Orexin B
由来種	Mouse
アプリケーション	適用あり: IHC-P
種交差性	交差種: Human
免疫原	Recombinant fragment: SGPPGLQGRL QRLLQASGNH AAGILT , corresponding to amino acids 71-96 of Human Orexin B Run BLAST with Run BLAST with

特記事項

The Life Science industry has been in the grips of a reproducibility crisis for a number of years. Abcam is leading the way in addressing this with our range of recombinant monoclonal antibodies and knockout edited cell lines for gold-standard validation. Please check that this product meets your needs before purchasing.

If you have any questions, special requirements or concerns, please send us an inquiry and/or contact our Support team ahead of purchase. Recommended alternatives for this product can be found below, along with publications, customer reviews and Q&As

製品の特性

製品の状態	Liquid
保存方法	Shipped at 4°C. Upon delivery aliquot and store at -20°C or -80°C. Avoid repeated freeze / thaw cycles.
バッファー	Constituent: PBS
精製度	Protein G purified
特記事項 (精製)	The IgG fraction of culture supernatant was purified by Protein G affinity chromatography and 0.2 µm filtered.
ポリ/モノ	モノクローナル
クローン名	MM0501-5G21
アイソタイプ	IgG1

アプリケーション

The Abpromise guarantee **Abpromise保証は、次のテスト済みアプリケーションにおけるab89888の使用に適用されず**
アプリケーションノートには、推奨の開始希釈率がありますが、適切な希釈率につきましてはご検討ください。

アプリケーション	Abreviews	特記事項
IHC-P		Use at an assay dependent concentration.

ターゲット情報

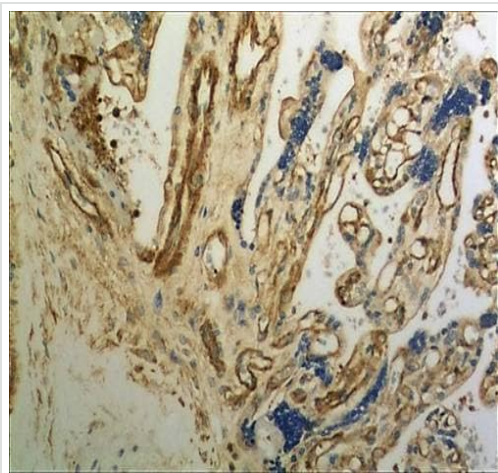
関連性

The hypothalamus acts as a major regulatory center involved in the control of feeding behavior and energy homeostasis. Several neuropeptides and proteins have been shown to be involved in the regulation of these processes. Orexin A (hypocretin 1) a 33 amino acid peptide and orexin B(hypocretin 2), a 28 amino acid peptide, are both derived from a common 130 amino acid precursor, prepro-orexin, which is encoded by a gene localized to human chromosome 17q21. Orexin A and Orexin B stimulate food consumption when administered intracerebroventricularly to rats. Orexin gene expression in the brain is highly restricted to distinct populations of neurons located in specific hypothalamic regions, including the lateral hypothalamic area (LHA), a region implicated in feeding behavior.

細胞内局在

Associated with perikaryal rough endoplasmic reticulum as well as cytoplasmic large granular vesicles at synapses.

画像



Immunohistochemistry (Formalin/PFA-fixed paraffin-embedded sections) analysis of human placental tissue section (4µm) labelling Orexin B with ab89888. Tissue was treated with 15µg/ml Protенase K for antigen retrieval and fixed with 4% PFA. A HRP-conjugated anti-mouse IgG was used as the secondary antibody (30 minutes at room temperature) followed by DAB color development.

Immunohistochemistry (Formalin/PFA-fixed paraffin-embedded sections) - Anti-Orexin B antibody
[MM0501-5G21] (ab89888)

Please note: All products are "FOR RESEARCH USE ONLY. NOT FOR USE IN DIAGNOSTIC PROCEDURES"

Our Abpromise to you: Quality guaranteed and expert technical support

- Replacement or refund for products not performing as stated on the datasheet
- Valid for 12 months from date of delivery
- Response to your inquiry within 24 hours

- We provide support in Chinese, English, French, German, Japanese and Spanish
- Extensive multi-media technical resources to help you
- We investigate all quality concerns to ensure our products perform to the highest standards

If the product does not perform as described on this datasheet, we will offer a refund or replacement. For full details of the Abpromise, please visit <https://www.abcam.co.jp/abpromise> or contact our technical team.

Terms and conditions

- Guarantee only valid for products bought direct from Abcam or one of our authorized distributors