


Anti-ORC4L antibody ab9641

11 References **画像数 4**

製品の概要

製品名	Anti-ORC4L antibody
製品の詳細	Goat polyclonal to ORC4L
由来種	Goat
アプリケーション	適用あり: WB
種交差性	交差種: Mouse, Rat, Human 交差が予測される動物種: Cow, Dog 
免疫原	Synthetic peptide corresponding to Human ORC4L aa 400-500 (C terminal). (NP_001177810.1; NP_001177811.1) Database link: NP_002543.2

 [Run BLAST with](#)

 [Run BLAST with](#)

特記事項

The Life Science industry has been in the grips of a reproducibility crisis for a number of years. Abcam is leading the way in addressing this with our range of recombinant monoclonal antibodies and knockout edited cell lines for gold-standard validation. Please check that this product meets your needs before purchasing.

If you have any questions, special requirements or concerns, please send us an inquiry and/or contact our Support team ahead of purchase. Recommended alternatives for this product can be found below, along with publications, customer reviews and Q&As

製品の特性

製品の状態	Liquid
保存方法	Shipped at 4°C. Store at +4°C short term (1-2 weeks). Upon delivery aliquot. Store at -20°C or -80°C. Avoid freeze / thaw cycle.
バッファー	pH: 7.30 Preservative: 0.02% Sodium azide Constituents: Tris buffered saline, 0.5% BSA
精製度	Immunogen affinity purified
特記事項 (精製)	Purified from goat serum by ammonium sulphate precipitation followed by antigen affinity chromatography using the immunizing peptide.
ポリ/モノ	ポリクローナル
アイソタイプ	IgG

アプリケーション

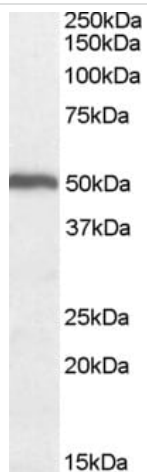
The Abpromise guarantee **Abpromise保証は、**次のテスト済みアプリケーションにおけるab9641の使用に適用されます
アプリケーションノートには、推奨の開始希釈率がありますが、適切な希釈率につきましてはご確認ください。

アプリケーション	Abreviews	特記事項
WB		Use a concentration of 0.5 - 2 µg/ml. Detects a band of approximately 50 kDa (predicted molecular weight: 50 kDa). 1 hour primary incubation is recommended for this product.

ターゲット情報

機能	Component of the origin recognition complex (ORC) that binds origins of replication. DNA-binding is ATP-dependent, however specific DNA sequences that define origins of replication have not been identified so far. ORC is required to assemble the pre-replication complex necessary to initiate DNA replication.
関連疾患	Defects in ORC4 are the cause of Meier-Gorlin syndrome type 2 (MGORS2) [MIM:613800]. MGORS2 is a syndrome characterized by bilateral microtia, aplasia/hypoplasia of the patellae, and severe intrauterine and postnatal growth retardation with short stature and poor weight gain. Additional clinical findings include anomalies of cranial sutures, microcephaly, apparently low-set and simple ears, microstomia, full lips, highly arched or cleft palate, micrognathia, genitourinary tract anomalies, and various skeletal anomalies. While almost all cases have primordial dwarfism with substantial prenatal and postnatal growth retardation, not all cases have microcephaly, and microtia and absent/hypoplastic patella are absent in some. Despite the presence of microcephaly, intellect is usually normal.
配列類似性	Belongs to the ORC4 family.
細胞内局在	Nucleus.

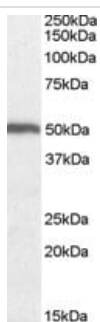
画像



Western blot - Anti-ORC4L antibody - ChIP Grade
(ab9641)

Anti-ORC4L antibody (ab9641) at 0.5 µg/ml + Mouse heart lysate at 35 µg

Predicted band size: 50 kDa



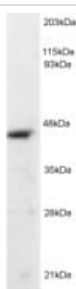
Western blot - Anti-ORC4L antibody - ChIP Grade
(ab9641)

Anti-ORC4L antibody (ab9641) at 0.5 µg/ml + Rat Heart lysate in RIPA buffer at 35 µg

Developed using the ECL technique.

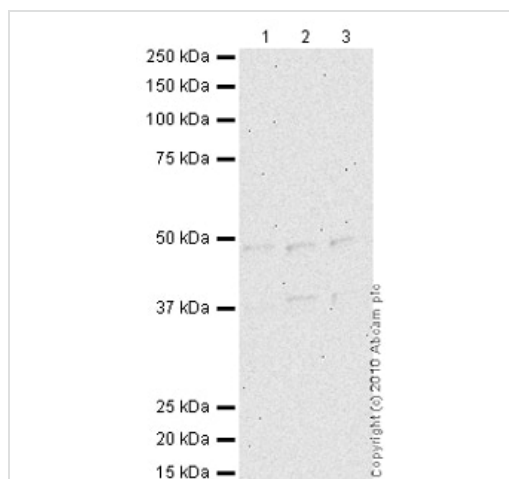
Predicted band size: 50 kDa

Observed band size: 50 kDa



Western blot - Anti-ORC4L antibody - ChIP Grade
(ab9641)

ab9641 (2µg/ml) staining of Jurkat lysate (RIPA buffer, 1.4E5 cells per lane). Detected by western blot using chemiluminescence.



Western blot - Anti-ORC4L antibody - ChIP Grade (ab9641)

All lanes : Anti-ORC4L antibody (ab9641) at 1 µg/ml

Lane 1 : Jurkat (Human T cell lymphoblast-like cell line) Whole Cell Lysate

Lane 2 : HepG2 (Human hepatocellular liver carcinoma cell line) Whole Cell Lysate

Lane 3 : HEK293 (Human embryonic kidney cell line) Whole Cell Lysate

Lysates/proteins at 10 µg per lane.

Secondary

All lanes : Rabbit polyclonal to Goat IgG - H&L - Pre-Adsorbed (HRP) at 1/3000 dilution

Developed using the ECL technique.

Performed under reducing conditions.

Predicted band size: 50 kDa

Observed band size: 49 kDa

Additional bands at: 38 kDa. We are unsure as to the identity of these extra bands.

Exposure time: 20 minutes

Please note: All products are "FOR RESEARCH USE ONLY. NOT FOR USE IN DIAGNOSTIC PROCEDURES"

Our Abpromise to you: Quality guaranteed and expert technical support

- Replacement or refund for products not performing as stated on the datasheet
- Valid for 12 months from date of delivery
- Response to your inquiry within 24 hours
- We provide support in Chinese, English, French, German, Japanese and Spanish
- Extensive multi-media technical resources to help you

- We investigate all quality concerns to ensure our products perform to the highest standards

If the product does not perform as described on this datasheet, we will offer a refund or replacement. For full details of the Abpromise, please visit <https://www.abcam.co.jp/abpromise> or contact our technical team.

Terms and conditions

- Guarantee only valid for products bought direct from Abcam or one of our authorized distributors