

Anti-ORC1 antibody ab85830

4 References [画像数 2](#)

製品の概要

製品名	Anti-ORC1 antibody
製品の詳細	Rabbit polyclonal to ORC1
由来種	Rabbit
アプリケーション	適用あり: WB, IP
種交差性	交差種: Human 交差が予測される動物種: Chimpanzee, Gorilla 
免疫原	Synthetic peptide, corresponding to a region between residues 811 and 861 of human ORC1 (NP_004144.2)
ポジティブ・コントロール	HeLa and 293T whole cell lysates.
特記事項	<p>The Life Science industry has been in the grips of a reproducibility crisis for a number of years. Abcam is leading the way in addressing this with our range of recombinant monoclonal antibodies and knockout edited cell lines for gold-standard validation. Please check that this product meets your needs before purchasing.</p> <p>If you have any questions, special requirements or concerns, please send us an inquiry and/or contact our Support team ahead of purchase. Recommended alternatives for this product can be found below, along with publications, customer reviews and Q&As</p>

製品の特性

製品の状態	Liquid
保存方法	Shipped at 4°C. Upon delivery aliquot and store at -20°C. Avoid freeze / thaw cycles.
バッファー	pH: 7 Preservative: 0.09% Sodium azide Constituent: Tris citrate/phosphate
精製度	Immunogen affinity purified
特記事項 (精製)	ab85830 was affinity purified using an epitope specific to ORC1 immobilized on solid support.
ポリモノ	ポリクローナル
アイソタイプ	IgG

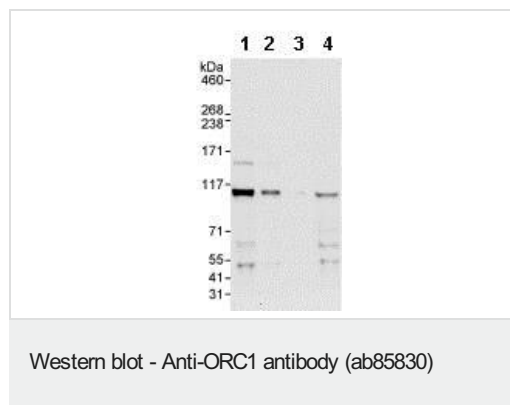
The Abpromise guarantee **Abpromise保証は、** 次のテスト済みアプリケーションにおけるab85830の使用に適用されず
 アプリケーションノートには、推奨の開始希釈率がありますが、適切な希釈率につきましてはご検討ください。

アプリケーション	Abreviews	特記事項
WB		1/2000 - 1/10000. Detects a band of approximately 97 kDa (predicted molecular weight: 97 kDa).
IP		Use at 2-5 µg/mg of lysate.

ターゲット情報

機能	Component of the origin recognition complex (ORC) that binds origins of replication. DNA-binding is ATP-dependent, however specific DNA sequences that define origins of replication have not been identified so far. ORC is required to assemble the pre-replication complex necessary to initiate DNA replication.
配列類似性	Belongs to the ORC1 family. Contains 1 BAH domain.
発生段階	Expression is cell-cycle regulated, it starts to accumulate in mid-G1 phase, reaches a peak at the G1/S boundary, and decreases to a basal level in S phase (at protein level).
細胞内局在	Nucleus.

画像



All lanes : Anti-ORC1 antibody (ab85830) at 0.4 µg/ml

Lane 1 : HeLa whole cell lysate at 50 µg

Lane 2 : HeLa whole cell lysate at 15 µg

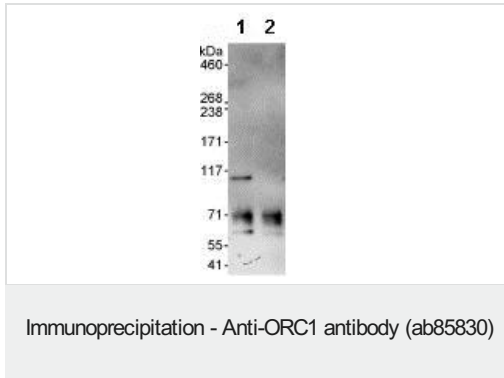
Lane 3 : HeLa whole cell lysate at 5 µg

Lane 4 : 293T whole cell lysate at 50 µg

Predicted band size: 97 kDa

Observed band size: 107 kDa

Exposure time: 3 minutes



Detection of Human ORC1 by Western Blot of Immunoprecipitate.

All lanes: ab85830 at 1µg/ml staining ORC1 in HeLa whole cell lysates immunoprecipitated at 3µg/mg lysate (1 mg/IP; 20% of IP loaded/lane) using the following antibodies:

Lane 1: ab85830

Lane 2: Control IgG

Detection: Chemiluminescence with exposure time of 30 seconds.

Please note: All products are "FOR RESEARCH USE ONLY. NOT FOR USE IN DIAGNOSTIC PROCEDURES"

Our Abpromise to you: Quality guaranteed and expert technical support

- Replacement or refund for products not performing as stated on the datasheet
- Valid for 12 months from date of delivery
- Response to your inquiry within 24 hours
- We provide support in Chinese, English, French, German, Japanese and Spanish
- Extensive multi-media technical resources to help you
- We investigate all quality concerns to ensure our products perform to the highest standards

If the product does not perform as described on this datasheet, we will offer a refund or replacement. For full details of the Abpromise, please visit <https://www.abcam.co.jp/abpromise> or contact our technical team.

Terms and conditions

- Guarantee only valid for products bought direct from Abcam or one of our authorized distributors