

Anti-OPN3 antibody ab75285

12 References [画像数 2](#)

製品の概要

| | |
|--------------|---|
| 製品名 | Anti-OPN3 antibody |
| 製品の詳細 | Rabbit polyclonal to OPN3 |
| 由来種 | Rabbit |
| アプリケーション | 適用あり: ELISA, WB, ICC/IF |
| 種交差性 | 交差種: Mouse, Human |
| 免疫原 | Synthetic peptide corresponding to Human OPN3 (internal sequence). |
| ポジティブ・コントロール | WB: Extracts from mouse brain cells. ICC/IF: MCF-7 cells. |
| 特記事項 | <p>The Life Science industry has been in the grips of a reproducibility crisis for a number of years. Abcam is leading the way in addressing this with our range of recombinant monoclonal antibodies and knockout edited cell lines for gold-standard validation. Please check that this product meets your needs before purchasing.</p> <p>If you have any questions, special requirements or concerns, please send us an inquiry and/or contact our Support team ahead of purchase. Recommended alternatives for this product can be found below, along with publications, customer reviews and Q&As</p> |

製品の特性

| | |
|-----------|---|
| 製品の状態 | Liquid |
| 保存方法 | Shipped at 4°C. Upon delivery aliquot and store at -20°C. Avoid repeated freeze / thaw cycles. |
| バッファー | <p>pH: 7.40</p> <p>Preservative: 0.02% Sodium azide</p> <p>Constituents: 0.87% Sodium chloride, 50% Glycerol (glycerin, glycerine), PBS</p> |
| 精製度 | Immunogen affinity purified |
| 特記事項 (精製) | The antibody was affinity purified from rabbit antiserum by affinity chromatography |
| ポリモノ | ポリクローナル |
| アイソタイプ | IgG |

アプリケーション

The Abpromise guarantee

Abpromise保証は、 次のテスト済みアプリケーションにおけるab75285の使用に適用されます

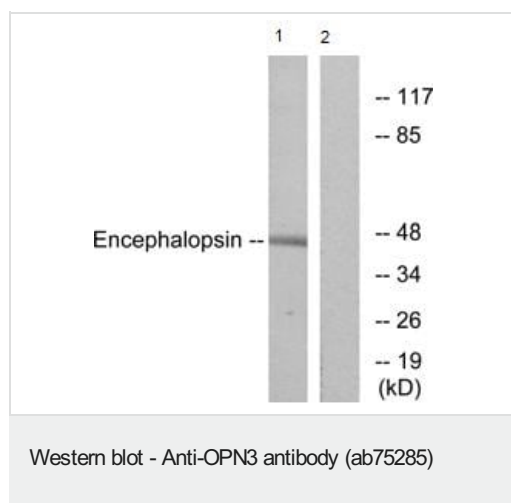
アプリケーションノートには、推奨の開始希釈率がありますが、適切な希釈率につきましてはご確認ください。

| アプリケーション | Abreviews | 特記事項 |
|----------|-----------|---|
| ELISA | | Use at an assay dependent concentration. |
| WB | | 1/500 - 1/1000. Predicted molecular weight: 45 kDa. |
| ICC/IF | | 1/500 - 1/1000. |

ターゲット情報

| | |
|-------|---|
| 機能 | May play a role in encephalic photoreception. |
| 組織特異性 | Strongly expressed in brain. Highly expressed in the preoptic area and paraventricular nucleus of the hypothalamus. Shows highly patterned expression in other regions of the brain, being enriched in selected regions of the cerebral cortex, cerebellar Purkinje cells, a subset of striatal neurons, selected thalamic nuclei, and a subset of interneurons in the ventral horn of the spinal cord. |
| 配列類似性 | Belongs to the G-protein coupled receptor 1 family. Opsin subfamily. |
| 細胞内局在 | Membrane. |

画像



All lanes : Anti-OPN3 antibody (ab75285) at 1/500 dilution

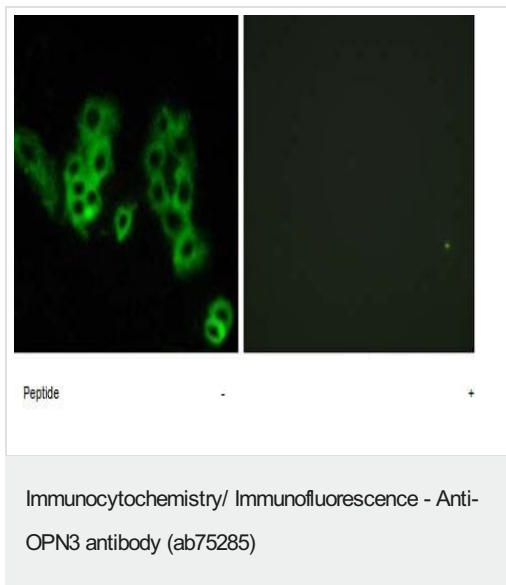
Lane 1 : Extracts from mouse brain cells

Lane 2 : Extracts from mouse brain cells with immunising peptide at 10 µg

Lysates/proteins at 10 µg per lane.

Predicted band size: 45 kDa

Observed band size: 45 kDa



ab75285 staining OPN3 in MCF-7 cells by Immunofluorescence.
Image on right when blocking peptide added.

Please note: All products are "FOR RESEARCH USE ONLY. NOT FOR USE IN DIAGNOSTIC PROCEDURES"

Our Abpromise to you: Quality guaranteed and expert technical support

- Replacement or refund for products not performing as stated on the datasheet
- Valid for 12 months from date of delivery
- Response to your inquiry within 24 hours
- We provide support in Chinese, English, French, German, Japanese and Spanish
- Extensive multi-media technical resources to help you
- We investigate all quality concerns to ensure our products perform to the highest standards

If the product does not perform as described on this datasheet, we will offer a refund or replacement. For full details of the Abpromise, please visit <https://www.abcam.co.jp/abpromise> or contact our technical team.

Terms and conditions

- Guarantee only valid for products bought direct from Abcam or one of our authorized distributors