

Anti-Oligodendrocyte Specific Protein antibody - Oligodendrocyte Marker ab7474

★★★★☆ [3 Abreviews](#) [14 References](#) [画像数 3](#)

製品の概要

製品名	Anti-Oligodendrocyte Specific Protein antibody - Oligodendrocyte Marker
製品の詳細	Rabbit polyclonal to Oligodendrocyte Specific Protein - Oligodendrocyte Marker
由来種	Rabbit
特異性	Reacts specifically with 22 kDa protein derived from CNS samples.
アプリケーション	適用あり: IHC-P, IHC-Fr
種交差性	交差種: Rat, Human
免疫原	A 15 residue synthetic C-terminal peptide.
特記事項	<p>The concentration depends on the batch, please enquire for current stock concentration.</p> <p>The Life Science industry has been in the grips of a reproducibility crisis for a number of years. Abcam is leading the way in addressing this with our range of recombinant monoclonal antibodies and knockout edited cell lines for gold-standard validation. Please check that this product meets your needs before purchasing.</p> <p>If you have any questions, special requirements or concerns, please send us an inquiry and/or contact our Support team ahead of purchase. Recommended alternatives for this product can be found below, along with publications, customer reviews and Q&As</p>

製品の特性

製品の状態	Liquid
保存方法	Shipped at 4°C. Store at +4°C short term (1-2 weeks). Upon delivery aliquot. Store at -20°C or -80°C. Avoid freeze / thaw cycle.
バッファー	Constituent: Whole serum
精製度	Whole antiserum
ポリ/モノ	ポリクローナル
アイソタイプ	IgG

アプリケーション

The Abpromise guarantee

Abpromise保証は、次のテスト済みアプリケーションにおけるab7474の使用に適用されます

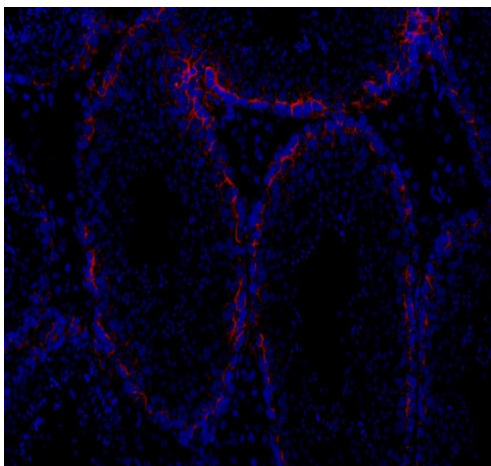
アプリケーションノートには、推奨の開始希釈率がありますが、適切な希釈率につきましてはご検討ください。

アプリケーション	Abreviews	特記事項
IHC-P	★★★★☆ (2)	1/50 - 1/500.
IHC-Fr	★★★★★ (1)	Use at an assay dependent concentration.

ターゲット情報

機能	Plays a major role in tight junction-specific obliteration of the intercellular space, through calcium-independent cell-adhesion activity.
配列類似性	Belongs to the claudin family.
細胞内局在	Cell junction > tight junction. Cell membrane.

画像

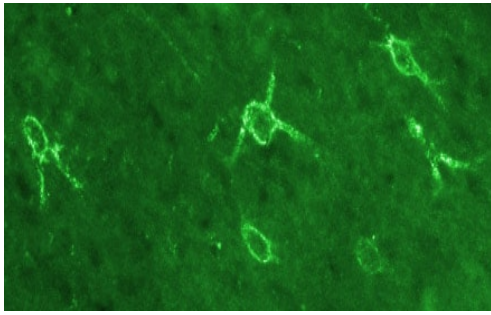


Immunohistochemical analysis of adult mouse testis tissue, staining Oligodendrocyte Specific Protein (red) with ab7474.

Tissue was blocked with 5% BSA for 1 hour at 25°C. Samples were incubated with primary antibody (1/100 in 1% BSA) for 1 hour at 25°C. A TRITC-conjugated donkey anti-rabbit polyclonal IgG (1/200) was used as the secondary antibody.

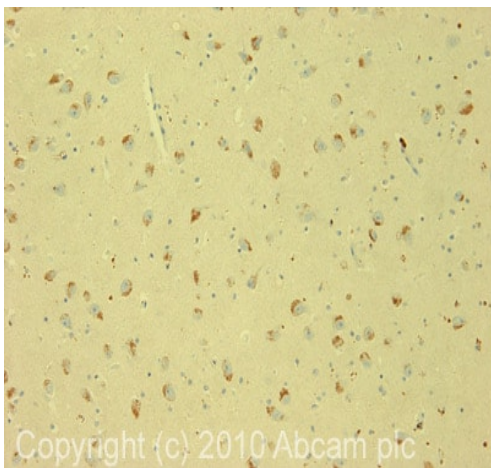
Immunohistochemistry (Frozen sections) - Anti-Oligodendrocyte Specific Protein antibody - Oligodendrocyte Marker (ab7474)

This image is courtesy of an Abreview submitted by Dr Qin Wen



Immunohistochemistry (Frozen sections) - Anti-Oligodendrocyte Specific Protein antibody - Oligodendrocyte Marker (ab7474)

Immunofluorescent staining for OSP obtained with OSP antibody (ab7474) in rat brain cortex. The picture shows oligodendrocyte immunostaining in the cingular cortex. Picture taken with X20 objective, cells stained are ~30microns in diameter. Animals were intracardially perfused with 4% PFA. Tissue was post-fixed overnight in the same fixative, cryoprotected in 20% sucrose and frozen in OCT. Protocol : free floating IHC on 30um cryostat sections. Primary antibody ab7474 was used at 1/100 and incubated overnight at RT. Secondary antibody, Alexa fluor 488 at 1/1000, incubated for 2h at RT.



Immunohistochemistry (Formalin/PFA-fixed paraffin-embedded sections) - Anti-Oligodendrocyte Specific Protein antibody - Oligodendrocyte Marker (ab7474)

IHC image of ab7474 staining in human hippocampus formalin fixed paraffin embedded tissue section, performed on a Leica Bond™ system using the standard protocol F. The section was pre-treated using heat mediated antigen retrieval with sodium citrate buffer (pH6, epitope retrieval solution 1) for 20 mins. The section was then incubated with ab7474, 5µg/ml, for 15 mins at room temperature and detected using an HRP conjugated compact polymer system. DAB was used as the chromogen. The section was then counterstained with haematoxylin and mounted with DPX.

For other IHC staining systems (automated and non-automated) customers should optimize variable parameters such as antigen retrieval conditions, primary antibody concentration and antibody incubation times.

Please note: All products are "FOR RESEARCH USE ONLY. NOT FOR USE IN DIAGNOSTIC PROCEDURES"

Our Abpromise to you: Quality guaranteed and expert technical support

- Replacement or refund for products not performing as stated on the datasheet
- Valid for 12 months from date of delivery
- Response to your inquiry within 24 hours
- We provide support in Chinese, English, French, German, Japanese and Spanish
- Extensive multi-media technical resources to help you
- We investigate all quality concerns to ensure our products perform to the highest standards

If the product does not perform as described on this datasheet, we will offer a refund or replacement. For full details of the Abpromise, please visit <https://www.abcam.co.jp/abpromise> or contact our technical team.

Terms and conditions

- Guarantee only valid for products bought direct from Abcam or one of our authorized distributors