


Anti-Oligodendrocyte Specific Protein antibody - Oligodendrocyte Marker ab53041

★★★★★ [21 Abreviews](#) [70 References](#) [画像数 1](#)

製品の概要

製品名	Anti-Oligodendrocyte Specific Protein antibody - Oligodendrocyte Marker
製品の詳細	Rabbit polyclonal to Oligodendrocyte Specific Protein - Oligodendrocyte Marker
由来種	Rabbit
特異性	Whilst ab53041 has been generated using synthetic peptide corresponding to human Oligodendrocyte protein (C-terminal), the antibody has only been validated for use in mouse. Detects endogenous levels of total Oligodendrocyte Specific Protein.
アプリケーション	適用あり: ICC, WB
種交差性	交差種: Mouse, Rat 交差が予測される動物種: Human 
免疫原	Synthetic peptide corresponding to Human Oligodendrocyte Specific Protein (C terminal). Database link: O75508
ポジティブ・コントロール	WB: Mouse brain extract.
特記事項	The Life Science industry has been in the grips of a reproducibility crisis for a number of years. Abcam is leading the way in addressing this with our range of recombinant monoclonal antibodies and knockout edited cell lines for gold-standard validation. Please check that this product meets your needs before purchasing. If you have any questions, special requirements or concerns, please send us an inquiry and/or contact our Support team ahead of purchase. Recommended alternatives for this product can be found below, along with publications, customer reviews and Q&As

製品の特性

製品の状態	Liquid
保存方法	Shipped at 4°C. Upon delivery aliquot and store at -20°C. Avoid freeze / thaw cycles.
バッファー	pH: 7 Preservative: 0.02% Sodium azide Constituents: 50% Glycerol, 0.87% Sodium chloride, PBS Without Mg+2 and Ca+2

精製度	Immunogen affinity purified
ポリ/モノ	ポリクローナル
アイソタイプ	IgG

アプリケーション

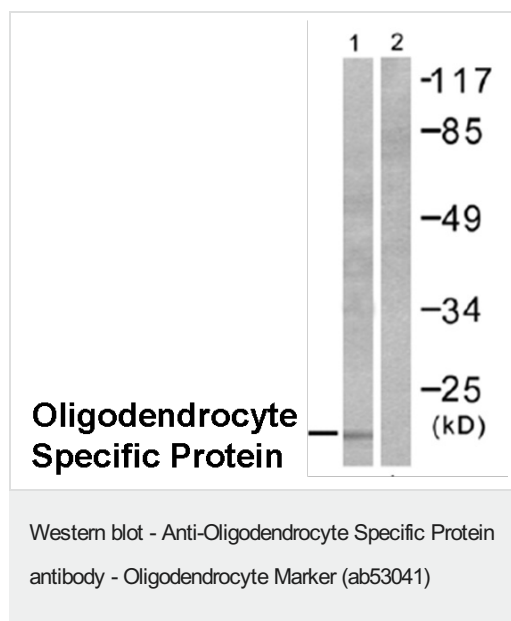
The Abpromise guarantee **Abpromise保証は、次のテスト済みアプリケーションにおけるab53041の使用に適用されます**
 アプリケーションノートには、推奨の開始希釈率がありますが、適切な希釈率につきましてはご検討ください。

アプリケーション	Abreviews	特記事項
ICC	★★★★★ (1)	1/200.
WB	★☆☆☆☆ (1)	1/500 - 1/1000. Detects a band of approximately 22 kDa (predicted molecular weight: 22 kDa).

ターゲット情報

機能	Plays a major role in tight junction-specific obliteration of the intercellular space, through calcium-independent cell-adhesion activity.
配列類似性	Belongs to the claudin family.
細胞内局在	Cell junction > tight junction. Cell membrane.

画像



All lanes : Anti-Oligodendrocyte Specific Protein antibody - Oligodendrocyte Marker (ab53041) at 1/500 dilution

Lane 1 : Mouse brain extract

Lane 2 : Mouse brain extract with peptide

Predicted band size: 22 kDa

Observed band size: 22 kDa

Secondary antibody - **anti-rabbit HRP (ab6721)**

Please note: All products are "FOR RESEARCH USE ONLY. NOT FOR USE IN DIAGNOSTIC PROCEDURES"

Our Abpromise to you: Quality guaranteed and expert technical support

- Replacement or refund for products not performing as stated on the datasheet
- Valid for 12 months from date of delivery
- Response to your inquiry within 24 hours

- We provide support in Chinese, English, French, German, Japanese and Spanish
- Extensive multi-media technical resources to help you
- We investigate all quality concerns to ensure our products perform to the highest standards

If the product does not perform as described on this datasheet, we will offer a refund or replacement. For full details of the Abpromise, please visit <https://www.abcam.co.jp/abpromise> or contact our technical team.

Terms and conditions

- Guarantee only valid for products bought direct from Abcam or one of our authorized distributors