


Anti-OLFM4 antibody ab85046

★★★★★ **3 Abreviews** **17 References** 画像数 **2**

製品の概要

製品名	Anti-OLFM4 antibody
製品の詳細	Rabbit polyclonal to OLFM4
由来種	Rabbit
アプリケーション	適用あり: ICC/IF, WB
種交差性	交差種: Human 交差が予測される動物種: Mouse 
免疫原	Synthetic peptide. This information is proprietary to Abcam and/or its suppliers.
ポジティブ・コントロール	In Western Blot, ab85046 gave a positive signal in Human liver tissue lysate. ICC/IF: HT-29 cells.
特記事項	<p>The Life Science industry has been in the grips of a reproducibility crisis for a number of years. Abcam is leading the way in addressing this with our range of recombinant monoclonal antibodies and knockout edited cell lines for gold-standard validation. Please check that this product meets your needs before purchasing.</p> <p>If you have any questions, special requirements or concerns, please send us an inquiry and/or contact our Support team ahead of purchase. Recommended alternatives for this product can be found below, along with publications, customer reviews and Q&As</p>

製品の特性

製品の状態	Liquid
保存方法	Shipped at 4°C. Store at +4°C short term (1-2 weeks). Upon delivery aliquot. Store at -20°C or -80°C. Avoid freeze / thaw cycle.
バッファー	<p>pH: 7.40</p> <p>Constituent: PBS</p> <p>Batches of this product that have a concentration < 1mg/ml may have BSA added as a stabilising agent. If you would like information about the formulation of a specific lot, please contact our scientific support team who will be happy to help.</p>
精製度	Immunogen affinity purified
ポリ/モノ	ポリクローナル
アイソタイプ	IgG

アプリケーション

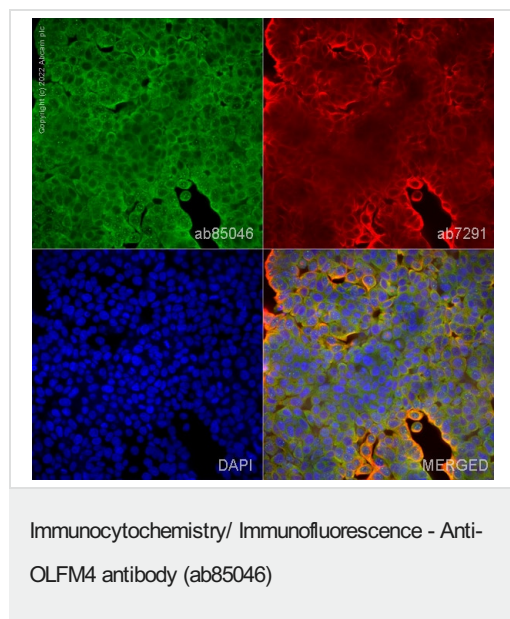
The Abpromise guarantee Abpromise保証は、次のテスト済みアプリケーションにおけるab85046の使用に適用されます
アプリケーションノートには、推奨の開始希釈率がありますが、適切な希釈率につきましてはご検討ください。

アプリケーション	Abreviews	特記事項
ICC/IF		Use a concentration of 5 µg/ml.
WB	★★★★★ (1)	Use a concentration of 1 µg/ml. Detects a band of approximately 54 kDa (predicted molecular weight: 57 kDa).

ターゲット情報

機能	An antiapoptotic factor that promotes tumor growth. Promotes proliferation of pancreatic cancer cells by favoring the transition from the S to G2/M phase. Facilitates cell adhesion.
組織特異性	Expressed during myeloid lineage development. Strongly expressed in the prostate, small intestine and colon and moderately expressed in the bone marrow and stomach. Highly expressed in pancreatic cancer tissues and shows an elevated expression level during the early S phase of the cell cycle. Also expressed at high levels in stomach cancer and colon cancer tissues.
配列類似性	Contains 1 olfactomedin-like domain.
ドメイン	The olfactomedin-like domain is involved in the interaction with cadherin.
翻訳後修飾	N-glycosylated.
細胞内局在	Secreted > extracellular space. According to PubMed:15059901, found in mitochondrion and nucleus.

画像



ab85046 staining OLFM4 in HT29 cells. The cells were fixed with 4% paraformaldehyde (10 min), permeabilized with 0.1% PBS-Triton X-100 for 5 minutes and then blocked with 1% BSA/10% normal goat serum/0.3M glycine in 0.1%PBS-Tween for 1h. The cells were then incubated overnight at 4°C with ab85046 at 1µg/ml and **ab7291**, Mouse monoclonal [DM1A] to alpha Tubulin - Loading Control. Cells were then incubated with **ab150081**, Goat polyclonal Secondary Antibody to Rabbit IgG - H&L (Alexa Fluor® 488), pre-adsorbed at 1/1000 dilution (shown in green) and **ab150120**, Goat polyclonal Secondary Antibody to Mouse IgG - H&L (Alexa Fluor® 594), pre-adsorbed at 1/1000 dilution (shown in pseudocolour red). Nuclear DNA was labelled with DAPI (shown in blue).

Image was acquired with a high-content analyser (Operetta CLS, Perkin Elmer) and a maximum intensity projection of confocal sections is shown.

250 kDa —
150 kDa —
100 kDa —
75 kDa —
50 kDa —
37 kDa —
25 kDa —
20 kDa —
15 kDa —

Copyright (c) 2019 Abcam plc

Western blot - Anti-OLFM4 antibody (ab85046)

Anti-OLFM4 antibody (ab85046) at 1 µg/ml + Human liver tissue lysate - total protein at 10 µg

Secondary

Goat Anti-Rabbit IgG H&L (HRP) ([ab97051](#)) at 1/1000 dilution

Developed using the ECL technique.

Performed under reducing conditions.

Predicted band size: 57 kDa

Additional bands at: 105 kDa (possible non-specific binding), 45 kDa (possible non-specific binding), 60 kDa (possible non-specific binding)

Exposure time: 4 minutes

This blot was produced using a 4-12% Bis-tris gel under the MOPS buffer system. The gel was run at 200V for 50 minutes before being transferred onto a Nitrocellulose membrane at 30V for 70 minutes. The membrane was then blocked for an hour using 2% Bovine Serum Albumin before being incubated with ab85046 overnight at 4°C. Antibody binding was detected using an anti-rabbit antibody conjugated to HRP, and visualised using ECL development solution [ab133406](#).

Please note: All products are "FOR RESEARCH USE ONLY. NOT FOR USE IN DIAGNOSTIC PROCEDURES"

Our Abpromise to you: Quality guaranteed and expert technical support

- Replacement or refund for products not performing as stated on the datasheet
- Valid for 12 months from date of delivery
- Response to your inquiry within 24 hours
- We provide support in Chinese, English, French, German, Japanese and Spanish
- Extensive multi-media technical resources to help you
- We investigate all quality concerns to ensure our products perform to the highest standards

If the product does not perform as described on this datasheet, we will offer a refund or replacement. For full details of the Abpromise, please visit <https://www.abcam.co.jp/abpromise> or contact our technical team.

Terms and conditions

- Guarantee only valid for products bought direct from Abcam or one of our authorized distributors