




Anti-Ogg1 antibody ab62826

★★★★★ [3 Abreviews](#) [画像数 1](#)

製品の概要

製品名	Anti-Ogg1 antibody
製品の詳細	Goat polyclonal to Ogg1
由来種	Goat
アプリケーション	適用あり: WB
種交差性	交差種: Rat 交差が予測される動物種: Mouse, Cow, Human 
免疫原	Synthetic peptide: C-HPKTSQAKGPSPLANK , corresponding to internal sequence amino acids 282-297 of Rat Ogg1 <div>  Run BLAST with  Run BLAST with </div>
ポジティブ・コントロール	Rat Spleen lysate
特記事項	<p>The Life Science industry has been in the grips of a reproducibility crisis for a number of years. Abcam is leading the way in addressing this with our range of recombinant monoclonal antibodies and knockout edited cell lines for gold-standard validation. Please check that this product meets your needs before purchasing.</p> <p>If you have any questions, special requirements or concerns, please send us an inquiry and/or contact our Support team ahead of purchase. Recommended alternatives for this product can be found below, along with publications, customer reviews and Q&As</p>

製品の特性

製品の状態	Liquid
保存方法	Shipped at 4°C. Upon delivery aliquot and store at -20°C. Avoid freeze / thaw cycles.
バッファー	pH: 7.30 Preservative: 0.02% Sodium azide Constituents: Tris buffered saline, 0.5% BSA
精製度	Immunogen affinity purified
特記事項 (精製)	Purified from goat serum by ammonium sulphate precipitation followed by antigen affinity chromatography using the immunizing peptide.
ポリ/モノ	ポリクローナル

アプリケーション

The Abpromise guarantee

Abpromise保証は、次のテスト済みアプリケーションにおけるab62826の使用に適用されます

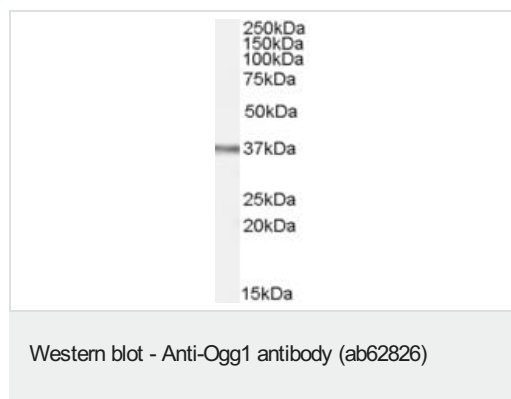
アプリケーションノートには、推奨の開始希釈率がありますが、適切な希釈率につきましてはご検討ください。

アプリケーション	Abreviews	特記事項
WB	★★★★☆ (3)	Use a concentration of 0.1 - 0.3 µg/ml. Detects a band of approximately 37 kDa (predicted molecular weight: 39 kDa). 1 hour primary incubation is recommended for this product.

ターゲット情報

機能	DNA repair enzyme that incises DNA at 8-oxoG residues. Excises 7,8-dihydro-8-oxoguanine and 2,6-diamino-4-hydroxy-5-N-methylformamidopyrimidine (FAPY) from damaged DNA. Has a beta-lyase activity that nicks DNA 3' to the lesion.
組織特異性	Ubiquitous.
関連疾患	Defects in OGG1 may be a cause of renal cell carcinoma (RCC) [MIM:144700]. It is a heterogeneous group of sporadic or hereditary carcinoma derived from cells of the proximal renal tubular epithelium. It is subclassified into clear cell renal carcinoma (non-papillary carcinoma), papillary renal cell carcinoma, chromophobe renal cell carcinoma, collecting duct carcinoma with medullary carcinoma of the kidney, and unclassified renal cell carcinoma.
配列類似性	Belongs to the type-1 OGG1 family.
細胞内局在	Mitochondrion; Nucleus and Nucleus > nucleoplasm. Nucleus speckle. Nucleus matrix. Together with APEX1 is recruited to nuclear speckles in UVA-irradiated cells.

画像



Anti-Ogg1 antibody (ab62826) at 0.1 µg/ml + Rat Spleen lysate at 35 µg

Predicted band size: 39 kDa

Observed band size: 37 kDa

Detected by chemiluminescence

Please note: All products are "FOR RESEARCH USE ONLY. NOT FOR USE IN DIAGNOSTIC PROCEDURES"

Our Abpromise to you: Quality guaranteed and expert technical support

-
- Replacement or refund for products not performing as stated on the datasheet
 - Valid for 12 months from date of delivery
 - Response to your inquiry within 24 hours

 - We provide support in Chinese, English, French, German, Japanese and Spanish
 - Extensive multi-media technical resources to help you
 - We investigate all quality concerns to ensure our products perform to the highest standards

If the product does not perform as described on this datasheet, we will offer a refund or replacement. For full details of the Abpromise, please visit <https://www.abcam.co.jp/abpromise> or contact our technical team.

Terms and conditions

- Guarantee only valid for products bought direct from Abcam or one of our authorized distributors