


Anti-Oct4 antibody ab137427

14 References 画像数 7

医薬用外劇物

製品の概要

製品名	Anti-Oct4 antibody
製品の詳細	Rabbit polyclonal to Oct4
由来種	Rabbit
アプリケーション	適用あり: WB, Flow Cyt, ICC/IF
種交差性	交差種: Mouse, Human 交差が予測される動物種: Rabbit, Cow, Cat, Pig, Monkey 
免疫原	Recombinant fragment corresponding to Human Oct4 aa 1-182.
ポジティブ・コントロール	Recombinant human Oct4 protein (ab134876) can be used as a positive control in WB. HeLa, Human embryonic stem cells (ESC) and Mouse ESC whole cell lysates; HeLa nuclear cell lysate; Human embryonic stem cells.
特記事項	<p>The Life Science industry has been in the grips of a reproducibility crisis for a number of years. Abcam is leading the way in addressing this with our range of recombinant monoclonal antibodies and knockout edited cell lines for gold-standard validation. Please check that this product meets your needs before purchasing.</p> <p>If you have any questions, special requirements or concerns, please send us an inquiry and/or contact our Support team ahead of purchase. Recommended alternatives for this product can be found below, along with publications, customer reviews and Q&As</p>

製品の特性

製品の状態	Liquid
保存方法	Shipped at 4°C. Store at +4°C short term (1-2 weeks). Upon delivery aliquot. Store at -20°C. Avoid freeze / thaw cycle.
バッファー	pH: 7.00 Preservative: 0.01% Thimerosal (merthiolate) Constituents: 78.99% PBS, 1% BSA, 20% Glycerol (glycerin, glycerine)
精製度	Protein A purified
特記事項(精製)	Affinity Purified
ポリ/モノ	ポリクローナル

アイソタイプIgG

アプリケーション

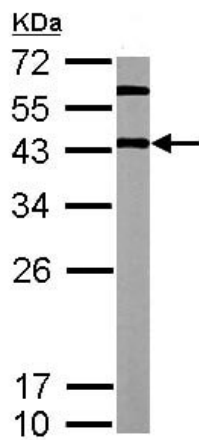
The Abpromise guarantee Abpromise保証は、 次のテスト済みアプリケーションにおけるab137427の使用に適用されます
アプリケーションノートには、推奨の開始希釈率がありますが、適切な希釈率につきましてはご確認ください。

アプリケーション	Abreviews	特記事項
WB		1/1000 - 1/10000. Predicted molecular weight: 38 kDa.
Flow Cyt		1/50 - 1/200. ab171870 - Rabbit polyclonal IgG, is suitable for use as an isotype control with this antibody.
ICC/IF		1/100 - 1/1000.

ターゲット情報

機能	Transcription factor that binds to the octamer motif (5'-ATTTGCAT-3'). Forms a trimeric complex with SOX2 on DNA and controls the expression of a number of genes involved in embryonic development such as YES1, FGF4, UTF1 and ZFP206. Critical for early embryogenesis and for embryonic stem cell pluripotency.
組織特異性	Expressed in developing brain. Highest levels found in specific cell layers of the cortex, the olfactory bulb, the hippocampus and the cerebellum. Low levels of expression in adult tissues.
配列類似性	Belongs to the POU transcription factor family. Class-5 subfamily. Contains 1 homeobox DNA-binding domain. Contains 1 POU-specific domain.
発生段階	Highly expressed in undifferentiated embryonic stem cells and expression decreases gradually after embryoid body (EB) formation.
ドメイン	The POU-specific domain mediates interaction with PKM2.
翻訳後修飾	Sumoylation enhances the protein stability, DNA binding and transactivation activity. Sumoylation is required for enhanced YES1 expression. Ubiquitinated; undergoes 'Lys-63'-linked polyubiquitination by WWP2 leading to proteasomal degradation.
細胞内局在	Nucleus. Expressed in a diffuse and slightly punctuate pattern.

画像

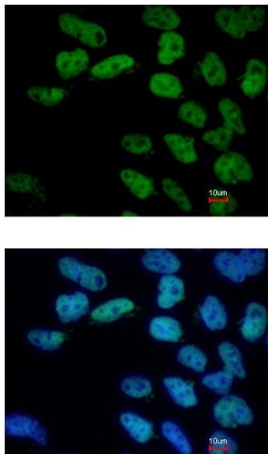


Western blot - Anti-Oct4 antibody (ab137427)

Anti-Oct4 antibody (ab137427) at 1/5000 dilution + Mouse
Embryonic Stem Cell whole cell lysate
at 20 µg

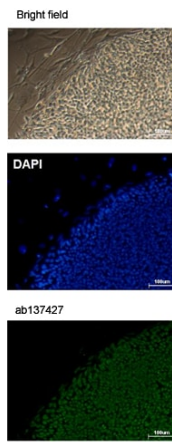
Predicted band size: 38 kDa

12% SDS PAGE



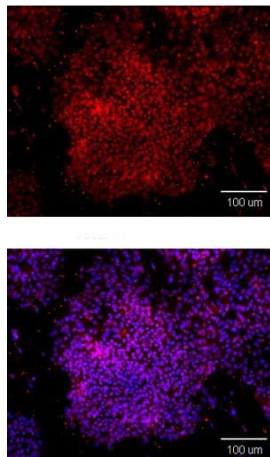
Immunocytochemistry/ Immunofluorescence - Anti-Oct4 antibody (ab137427)

Immunofluorescent analysis of paraformaldehyde-fixed Human
Embryonic Stem cells labelling Oct4 with ab137427 at 1:400 dilution.
Lower image shows cells co-stained with Hoechst 33342.



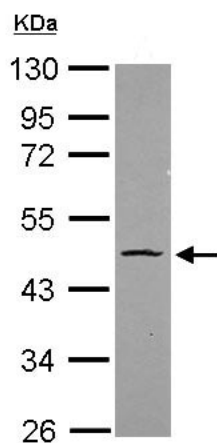
Immunocytochemistry/ Immunofluorescence - Anti-Oct4 antibody (ab137427)

Immunofluorescent analysis of paraformaldehyde-fixed Human embryonic stem cells labelling Oct4 with ab137427 at 1:200 dilution.



Immunocytochemistry/ Immunofluorescence - Anti-Oct4 antibody (ab137427)

Immunofluorescent analysis of paraformaldehyde-fixed Human embryonic stem cells labelling Oct4 with ab137427 at 1:100 dilution. Lower image shows cells co-stained with DAPI.

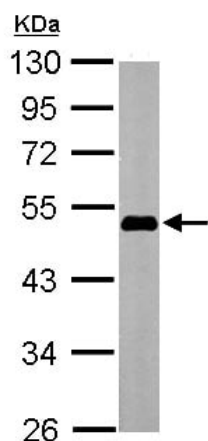


Western blot - Anti-Oct4 antibody (ab137427)

Anti-Oct4 antibody (ab137427) at 1/1000 dilution + HeLa nuclear cell lysate at 20 µg

Predicted band size: 38 kDa

10% SDS PAGE

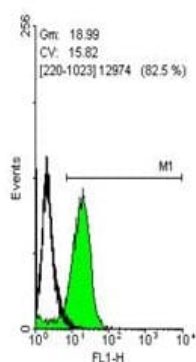


Anti-Oct4 antibody (ab137427) at 1/1000 dilution + Human Embryonic Stem Cell whole cell lysate at 20 µg

Predicted band size: 38 kDa

10% SDS PAGE

Western blot - Anti-Oct4 antibody (ab137427)



Flow cytometric analysis of Human Embryonic Stem cells labelling Oct4 with ab137427 at 1:50 dilution (green) or rabbit IgG (black).

Flow Cytometry - Anti-Oct4 antibody (ab137427)

Please note: All products are "FOR RESEARCH USE ONLY. NOT FOR USE IN DIAGNOSTIC PROCEDURES"

Our Abpromise to you: Quality guaranteed and expert technical support

- Replacement or refund for products not performing as stated on the datasheet
- Valid for 12 months from date of delivery
- Response to your inquiry within 24 hours
- We provide support in Chinese, English, French, German, Japanese and Spanish
- Extensive multi-media technical resources to help you
- We investigate all quality concerns to ensure our products perform to the highest standards

If the product does not perform as described on this datasheet, we will offer a refund or replacement. For full details of the Abpromise, please visit <https://www.abcam.co.jp/abpromise> or contact our technical team.

Terms and conditions

- Guarantee only valid for products bought direct from Abcam or one of our authorized distributors