

Anti-OCRL antibody ab125917

面格新?

医薬用外劇物

製品の概要

製品名	Anti-OCRL antibody
製品の詳細	Rabbit polyclonal to OCRL
由来種	Rabbit
アプリケーション	適用あり: WB, IHC-P, ICC/IF
種交差性	交差種: Human
免疫原	Recombinant fragment corresponding to Human OCRL aa 591-857. Database link: Q01968
ポジティブ・コントロール	293T and A431 cell lysates, A431 cells and Human Breast ca tissue.
特記事項	<p>The Life Science industry has been in the grips of a reproducibility crisis for a number of years. Abcam is leading the way in addressing this with our range of recombinant monoclonal antibodies and knockout edited cell lines for gold-standard validation. Please check that this product meets your needs before purchasing.</p> <p>If you have any questions, special requirements or concerns, please send us an inquiry and/or contact our Support team ahead of purchase. Recommended alternatives for this product can be found below, along with publications, customer reviews and Q&As</p>

製品の特性

製品の状態	Liquid
保存方法	Shipped at 4°C. Upon delivery aliquot and store at -20°C or -80°C. Avoid repeated freeze / thaw cycles.
バッファー	pH: 7.00 Preservative: 0.01% Thimerosal (merthiolate) Constituents: 1.21% Tris, 0.75% Glycine, 20% Glycerol (glycerin, glycerine)
精製度	Immunogen affinity purified
ポリ/モノ	ポリクローナル
アイソタイプ	IgG

アプリケーション

The Abpromise guarantee

Abpromise保証は、次のテスト済みアプリケーションにおけるab125917の使用に適用されます

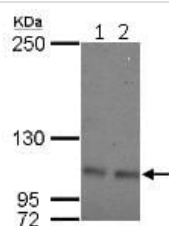
アプリケーションノートには、推奨の開始希釈率がありますが、適切な希釈率につきましてはご検討ください。

アプリケーション	Abreviews	特記事項
WB		1/500 - 1/3000. Detects a band of approximately 104 kDa.
IHC-P		1/100 - 1/500. Perform heat mediated antigen retrieval with citrate buffer pH 6 before commencing with IHC staining protocol. citrate buffer-10mM
ICC/IF		1/100 - 1/500.

ターゲット情報

機能	Converts phosphatidylinositol 4,5-bisphosphate to phosphatidylinositol 4-phosphate. Also converts inositol 1,4,5-trisphosphate to inositol 1,4-bisphosphate and inositol 1,3,4,5-tetrakisphosphate to inositol 1,3,4-trisphosphate. May function in lysosomal membrane trafficking by regulating the specific pool of phosphatidylinositol 4,5-bisphosphate that is associated with lysosomes.
組織特異性	Brain, skeletal muscle, heart, kidney, lung, placenta and fibroblasts.
関連疾患	<p>Defects in OCRL are the cause of Lowe oculocerebrorenal syndrome (OCRL) [MIM:309000]. It is an X-linked multisystem disorder affecting eyes, nervous system, and kidney. It is characterized by hydrophthalmia, cataract, mental retardation, vitamin D-resistant rickets, aminoaciduria, and reduced ammonia production by the kidney. Ocular abnormalities include cataract, glaucoma, microphthalmos, and decreased visual acuity. Developmental delay, hypotonia, behavior abnormalities, and areflexia are also present. Renal tubular involvement is characterized by impaired reabsorption of bicarbonate, amino acids, and phosphate. Musculoskeletal abnormalities such as joint hypermobility, dislocated hips, and fractures may develop as consequences of renal tubular acidosis and hypophosphatemia. Cataract is the only significant manifestation in carriers and is detected by slit-lamp examination.</p> <p>Defects in OCRL are the cause of Dent disease type 2 (DD2) [MIM:300555]. DD2 is a renal disease belonging to the 'Dent disease complex', a group of disorders characterized by proximal renal tubular defect, hypercalciuria, nephrocalcinosis, and renal insufficiency. The spectrum of phenotypic features is remarkably similar in the various disorders, except for differences in the severity of bone deformities and renal impairment. Characteristic abnormalities include low-molecular-weight proteinuria and other features of Fanconi syndrome, such as glycosuria, aminoaciduria, and phosphaturia, but typically do not include proximal renal tubular acidosis. Progressive renal failure is common, as are nephrocalcinosis and kidney stones.</p>
配列類似性	<p>Belongs to the inositol-1,4,5-trisphosphate 5-phosphatase type II family.</p> <p>Contains 1 Rho-GAP domain.</p>
細胞内局在	Endosome. Also found on macropinosomes.

画像



Western blot - Anti-OCRL antibody (ab125917)

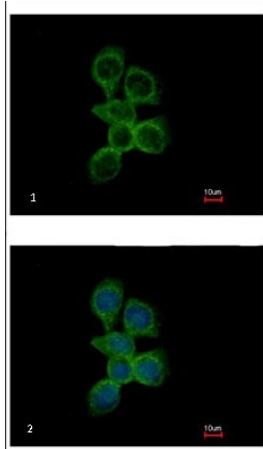
All lanes : Anti-OCRL antibody (ab125917) at 1/500 dilution

Lane 1 : 293T whole cell lysate

Lane 2 : A431 whole cell lysate

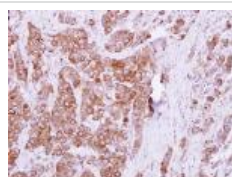
Lysates/proteins at 30 µg per lane.

Gel concentration:5%



Immunocytochemistry/ Immunofluorescence - Anti-OCRL antibody (ab125917)

ab125917, at 1/500, staining OCRL in Human A431 cells (methanol-fixed) by immunofluorescence (panel 1) and co-stained with Hoechst 33342 (panel 2).



Immunohistochemistry (Formalin/PFA-fixed paraffin-embedded sections) - Anti-OCRL antibody (ab125917)

ab125917, at 1/250, staining OCRL in Human Breast ca tissue by immunohistochemistry [Paraffin Embedded Tissues (IHC-P)].

Please note: All products are "FOR RESEARCH USE ONLY. NOT FOR USE IN DIAGNOSTIC PROCEDURES"

Our Promise to you: Quality guaranteed and expert technical support

- Replacement or refund for products not performing as stated on the datasheet
- Valid for 12 months from date of delivery
- Response to your inquiry within 24 hours

- We provide support in Chinese, English, French, German, Japanese and Spanish
- Extensive multi-media technical resources to help you
- We investigate all quality concerns to ensure our products perform to the highest standards

If the product does not perform as described on this datasheet, we will offer a refund or replacement. For full details of the Abpromise, please visit <https://www.abcam.co.jp/abpromise> or contact our technical team.

Terms and conditions

- Guarantee only valid for products bought direct from Abcam or one of our authorized distributors