

# Anti-NUP35 antibody ab11692

**1** [References](#) **2** [画像数](#)

### 製品の概要

製品名	Anti-NUP35 antibody
製品の詳細	Rabbit polyclonal to NUP35
由来種	Rabbit
アプリケーション	<b>適用あり:</b> WB, ICC/IF
種交差性	<b>交差種:</b> <i>Saccharomyces cerevisiae</i>
免疫原	Fusion protein corresponding to <i>Saccharomyces cerevisiae</i> NUP35.
特記事項	<p>The Life Science industry has been in the grips of a reproducibility crisis for a number of years. Abcam is leading the way in addressing this with our range of recombinant monoclonal antibodies and knockout edited cell lines for gold-standard validation. Please check that this product meets your needs before purchasing.</p> <p>If you have any questions, special requirements or concerns, please send us an inquiry and/or contact our Support team ahead of purchase. Recommended alternatives for this product can be found below, along with publications, customer reviews and Q&amp;As</p>

### 製品の特性

製品の状態	Liquid
保存方法	Shipped at 4°C. Upon delivery aliquot and store at -20°C or -80°C. Avoid repeated freeze / thaw cycles.
バッファー	Preservative: 0.1% Sodium azide Constituent: Whole serum
精製度	Whole antiserum
ポリ/モノ	ポリクローナル
アイソタイプ	IgG

### アプリケーション

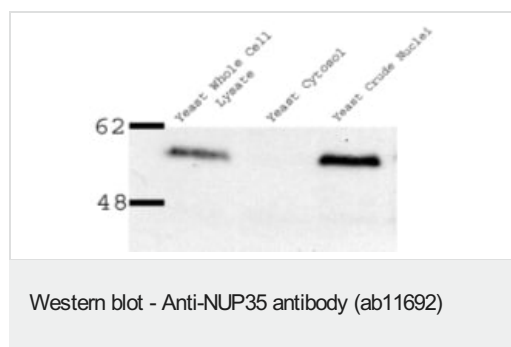
**The Abpromise guarantee**      **Abpromise保証は、**次のテスト済みアプリケーションにおけるab11692の使用に適用されます  
アプリケーションノートには、推奨の開始希釈率がありますが、適切な希釈率につきましてはご検討ください。

アプリケーション	Abreviews	特記事項
WB		1/1000. Detects a band of approximately 53 kDa.
ICC/IF		Use at an assay dependent dilution.

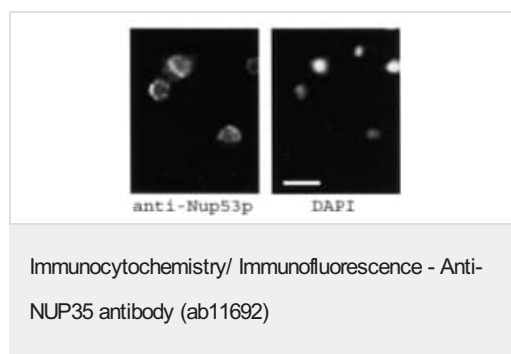
## ターゲット情報

機能	Functions as a component of the nuclear pore complex (NPC). NPC components, collectively referred to as nucleoporins (NUPs). Can play the role of both NPC structural components and of docking or interaction partners for transiently associated nuclear transport factors. May play a role in the association of MAD1 with the NPC.
配列類似性	Belongs to the Nup53 family. Contains 1 RRM Nup35-type domain.
細胞内局在	Nucleus > nuclear pore complex. Nucleus membrane. Tightly associated with the nuclear membrane and lamina.

## 画像



ab11692 at a 1/1000 dilution staining approximately 53kDa Nup35 in *S.cerevisiae* nuclear and whole cell lysate by Western blot (ECL).  
ab11692 at a 1/1000 dilution staining approximately 53kDa Nup35 in *S.cerevisiae* nuclear and whole cell lysate by Western blot (ECL).



ab11692 at a 1/1000 dilution staining Nup35 in *S.cerevisiae* by immunofluorescence.

**Please note:** All products are "FOR RESEARCH USE ONLY. NOT FOR USE IN DIAGNOSTIC PROCEDURES"

## Our Abpromise to you: Quality guaranteed and expert technical support

- Replacement or refund for products not performing as stated on the datasheet
- Valid for 12 months from date of delivery

- Response to your inquiry within 24 hours
- We provide support in Chinese, English, French, German, Japanese and Spanish
- Extensive multi-media technical resources to help you
- We investigate all quality concerns to ensure our products perform to the highest standards

If the product does not perform as described on this datasheet, we will offer a refund or replacement. For full details of the Abpromise, please visit <https://www.abcam.co.jp/abpromise> or contact our technical team.

#### **Terms and conditions**

---

- Guarantee only valid for products bought direct from Abcam or one of our authorized distributors