

### Anti-NUP133 antibody ab114096

画像数 1

#### 製品の概要

---

製品名	Anti-NUP133 antibody
製品の詳細	Rabbit polyclonal to NUP133
由来種	Rabbit
アプリケーション	<b>適用あり:</b> IP
種交差性	<b>交差種:</b> Human <b>交差が予測される動物種:</b> Chimpanzee, Rhesus monkey, Gorilla, Orangutan 
免疫原	Synthetic peptide, corresponding to a region between amino acids 650-700 of Human NUP133 (NP_060700.2).
ポジティブ・コントロール	Whole cell lysate from Hela cells.
特記事項	<p>The Life Science industry has been in the grips of a reproducibility crisis for a number of years. Abcam is leading the way in addressing this with our range of recombinant monoclonal antibodies and knockout edited cell lines for gold-standard validation. Please check that this product meets your needs before purchasing.</p> <p>If you have any questions, special requirements or concerns, please send us an inquiry and/or contact our Support team ahead of purchase. Recommended alternatives for this product can be found below, along with publications, customer reviews and Q&amp;As</p>

#### 製品の特性

---

製品の状態	Liquid
保存方法	Shipped at 4°C. Upon delivery aliquot and store at -20°C. Avoid freeze / thaw cycles.
バッファー	pH: 7 Preservative: 0.09% Sodium azide Constituent: 99% Tris citrate/phosphate
精製度	pH: 7 to 8 Immunogen affinity purified
特記事項 (精製)	ab114096 was affinity purified using an epitope specific to NUP133 immobilized on solid support.
ポリ/モノ	ポリクローナル

## アプリケーション

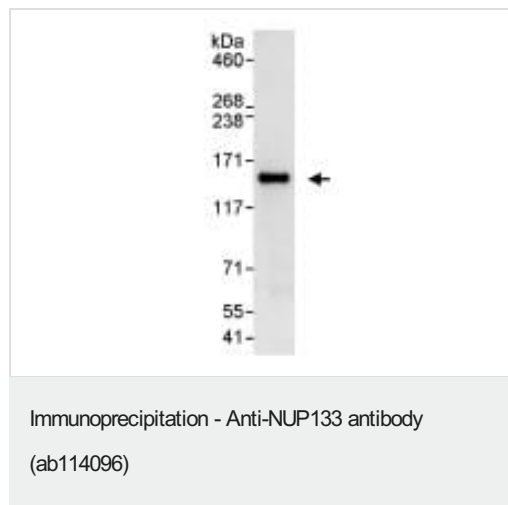
**The Abpromise guarantee** **Abpromise保証は、次のテスト済みアプリケーションにおけるab114096の使用に適用されます**  
アプリケーションノートには、推奨の開始希釈率がありますが、適切な希釈率につきましてはご検討ください。

アプリケーション	Abreviews	特記事項
IP		Use at 5-10 µg/mg of lysate.

## ターゲット情報

<b>機能</b>	Involved in poly(A)+ RNA transport.
<b>配列類似性</b>	Belongs to the nucleoporin Nup133 family.
<b>細胞内局在</b>	Nucleus > nuclear pore complex. Chromosome > centromere > kinetochore. Located on both the cytoplasmic and nuclear sides of the nuclear pore. During mitosis, localizes to the kinetochores.

## 画像



A rabbit anti-NUP133 antibody, at 1 µg/ml, staining NUP133 in HeLa whole cell lysate immunoprecipitated using ab114096 at 10 µg/mg lysate (1 mg for IP; 20% of IP loaded/lane). Detection: Chemiluminescence with an exposure time of 10 seconds.

**Please note:** All products are "FOR RESEARCH USE ONLY. NOT FOR USE IN DIAGNOSTIC PROCEDURES"

## Our Abpromise to you: Quality guaranteed and expert technical support

- Replacement or refund for products not performing as stated on the datasheet
- Valid for 12 months from date of delivery
- Response to your inquiry within 24 hours
- We provide support in Chinese, English, French, German, Japanese and Spanish
- Extensive multi-media technical resources to help you

- We investigate all quality concerns to ensure our products perform to the highest standards

If the product does not perform as described on this datasheet, we will offer a refund or replacement. For full details of the Abpromise, please visit <https://www.abcam.co.jp/abpromise> or contact our technical team.

### **Terms and conditions**

---

- Guarantee only valid for products bought direct from Abcam or one of our authorized distributors