

Anti-NuMA antibody [EP3976] ab109262

リコンビナント RabMAb[®]

18 References [画像数 6](#)

製品の概要

製品名	Anti-NuMA antibody [EP3976]
製品の詳細	Rabbit monoclonal [EP3976] to NuMA
由来種	Rabbit
アプリケーション	適用あり: WB, IHC-P, ICC/IF 適用なし: Flow Cyt or IP
種交差性	交差種: Human 交差が予測される動物種: Mouse, Rat 
免疫原	Synthetic peptide. This information is proprietary to Abcam and/or its suppliers.
ポジティブ・コントロール	K562, HeLa, MCF7, Raji, SW480, CACO2, and MOLT4 cell lysates; Human breast carcinoma, normal breast and colonic adenocarcinoma tissues; HeLa cells.
特記事項	<p>This product is a recombinant monoclonal antibody, which offers several advantages including:</p> <ul style="list-style-type: none">- High batch-to-batch consistency and reproducibility- Improved sensitivity and specificity- Long-term security of supply- Animal-free production <p>For more information see here.</p> <p>Our RabMAb[®] technology is a patented hybridoma-based technology for making rabbit monoclonal antibodies. For details on our patents, please refer to RabMAb[®] patents.</p>

製品の特性

製品の状態	Liquid
保存方法	Shipped at 4°C. Store at -20°C. Stable for 12 months at -20°C.
バッファー	pH: 7.20 Preservative: 0.01% Sodium azide Constituents: 59% PBS, 40% Glycerol (glycerin, glycerine), 0.05% BSA
精製度	Protein A purified
ポリ/モノ	モノクローナル
クローン名	EP3976

アプリケーション

The Abpromise guarantee **Abpromise保証は、次のテスト済みアプリケーションにおけるab109262の使用に適用されます**
アプリケーションノートには、推奨の開始希釈率がありますが、適切な希釈率につきましてはご検討ください。

アプリケーション	Abreviews	特記事項
WB		1/1000 - 1/10000. Predicted molecular weight: 238 kDa.
IHC-P		1/250 - 1/500. Perform heat mediated antigen retrieval with citrate buffer pH 6 before commencing with IHC staining protocol.
ICC/IF		1/100 - 1/250.

追加情報

Is unsuitable for Flow Cyt or IP.

ターゲット情報

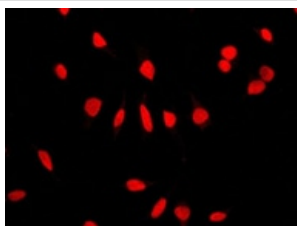
機能

May be a structural component of the nucleus.

細胞内局在

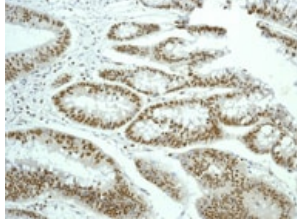
Nucleus. Chromosome. Dissociates from condensing chromosomes during early prophase, before the complete disintegration of the nuclear lamina. As mitosis progresses it reassociates with telophase chromosomes very early during nuclear reformation, before substantial accumulation of lamins on chromosomal surfaces is evident.

画像



ab109262, at 1/100 dilution, staining NuMA in HeLa cells by Immunofluorescence.

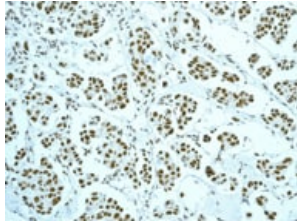
Immunocytochemistry/ Immunofluorescence - Anti-NuMA antibody [EP3976] (ab109262)



Immunohistochemistry (Formalin/PFA-fixed paraffin-embedded sections) - Anti-NuMA antibody [EP3976] (ab109262)

ab109262, at 1/250 dilution, staining NuMA in paraffin-embedded Human colonic adenocarcinoma by Immunohistochemistry.

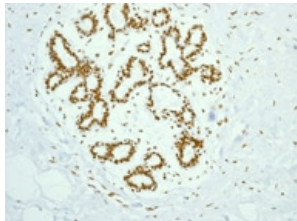
Perform heat mediated antigen retrieval with citrate buffer pH 6 before commencing with IHC staining protocol.



Immunohistochemistry (Formalin/PFA-fixed paraffin-embedded sections) - Anti-NuMA antibody [EP3976] (ab109262)

ab109262, at 1/250 dilution, staining NuMA in paraffin-embedded Human breast carcinoma by Immunohistochemistry.

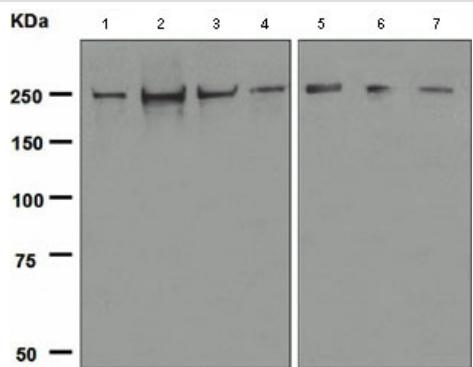
Perform heat mediated antigen retrieval with citrate buffer pH 6 before commencing with IHC staining protocol.



Immunohistochemistry (Formalin/PFA-fixed paraffin-embedded sections) - Anti-NuMA antibody [EP3976] (ab109262)

ab109262, at 1/250 dilution, staining NuMA in paraffin-embedded Human breast tissue by Immunohistochemistry.

Perform heat mediated antigen retrieval with citrate buffer pH 6 before commencing with IHC staining protocol.



Western blot - Anti-NuMA antibody [EP3976] (ab109262)

All lanes : Anti-NuMA antibody [EP3976] (ab109262) at 1/1000 dilution

Lane 1 : K562 cell lysate

Lane 2 : HeLa cell lysate

Lane 3 : MCF7 cell lysate

Lane 4 : Raji cell lysate

Lane 5 : SW480 cell lysate


Lane 6 : CACO2 cell lysate

Lane 7 : MOLT4 cell lysate

Lysates/proteins at 10 µg per lane.

Predicted band size: 238 kDa

Why choose a recombinant antibody?



Research with confidence
Consistent and reproducible results

Long-term and scalable supply
Recombinant technology

Success from the first experiment
Confirmed specificity

Ethical standards compliant
Animal-free production

Anti-NuMA antibody [EP3976] (ab109262)

Please note: All products are "FOR RESEARCH USE ONLY. NOT FOR USE IN DIAGNOSTIC PROCEDURES"

Our Abpromise to you: Quality guaranteed and expert technical support

- Replacement or refund for products not performing as stated on the datasheet
- Valid for 12 months from date of delivery
- Response to your inquiry within 24 hours
- We provide support in Chinese, English, French, German, Japanese and Spanish
- Extensive multi-media technical resources to help you
- We investigate all quality concerns to ensure our products perform to the highest standards

If the product does not perform as described on this datasheet, we will offer a refund or replacement. For full details of the Abpromise, please visit <https://www.abcam.co.jp/abpromise> or contact our technical team.

Terms and conditions

- Guarantee only valid for products bought direct from Abcam or one of our authorized distributors