

Anti-NuMA antibody ab97585

★★★★☆ **2 Abreviews** **20 References** 画像数 3

製品の概要

製品名	Anti-NuMA antibody
製品の詳細	Rabbit polyclonal to NuMA
由来種	Rabbit
アプリケーション	適用あり: WB, IHC-P, ICC/IF
種交差性	交差種: Human
免疫原	Recombinant protein fragment corresponding to a region within amino acids 1 and 309 of Human NuMA (AAH04165).
ポジティブ・コントロール	293T, A431, H1299, HeLa, MOLT4 or Raji cell lines.
特記事項	<p>The Life Science industry has been in the grips of a reproducibility crisis for a number of years. Abcam is leading the way in addressing this with our range of recombinant monoclonal antibodies and knockout edited cell lines for gold-standard validation. Please check that this product meets your needs before purchasing.</p> <p>If you have any questions, special requirements or concerns, please send us an inquiry and/or contact our Support team ahead of purchase. Recommended alternatives for this product can be found below, along with publications, customer reviews and Q&As</p>

製品の特性

製品の状態	Liquid
保存方法	Shipped at 4°C. Upon delivery aliquot. Store at -20°C or -80°C. Avoid freeze / thaw cycle.
バッファー	<p>pH: 7.00</p> <p>Preservative: 0.025% Proclin 300</p> <p>Constituents: 79% PBS, 20% Glycerol (glycerin, glycerine)</p>
精製度	Immunogen affinity purified
ポリ/モノ	ポリクローナル
アイソタイプ	IgG

アプリケーション

The Abpromise guarantee

Abpromise保証は、 次のテスト済みアプリケーションにおけるab97585の使用に適用されます

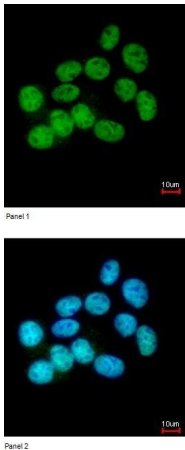
アプリケーションノートには、推奨の開始希釈率がありますが、適切な希釈率につきましてはご確認ください。

アプリケーション	Abreviews	特記事項
WB		1/500 - 1/3000. Predicted molecular weight: 238 kDa.
IHC-P	★☆☆☆☆ (1)	1/100 - 1/500.
ICC/IF	★★★★★ (1)	1/100 - 1/200.

ターゲット情報

機能	May be a structural component of the nucleus.
細胞内局在	Nucleus. Chromosome. Dissociates from condensing chromosomes during early prophase, before the complete disintegration of the nuclear lamina. As mitosis progresses it reassociates with telophase chromosomes very early during nuclear reformation, before substantial accumulation of lamins on chromosomal surfaces is evident.

画像

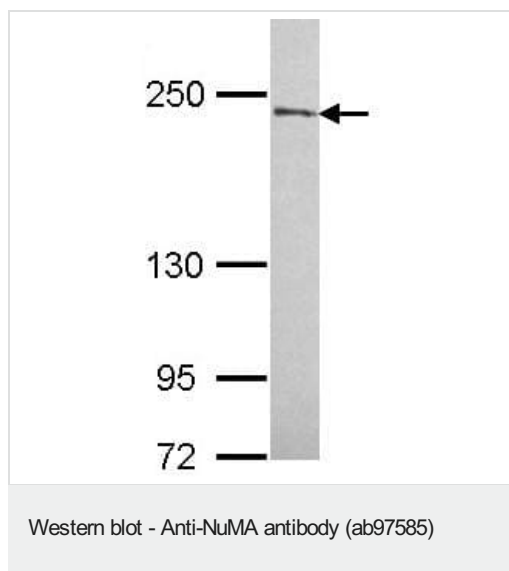


Panel 1

Panel 2

Immunocytochemistry/ Immunofluorescence - Anti-NuMA antibody (ab97585)

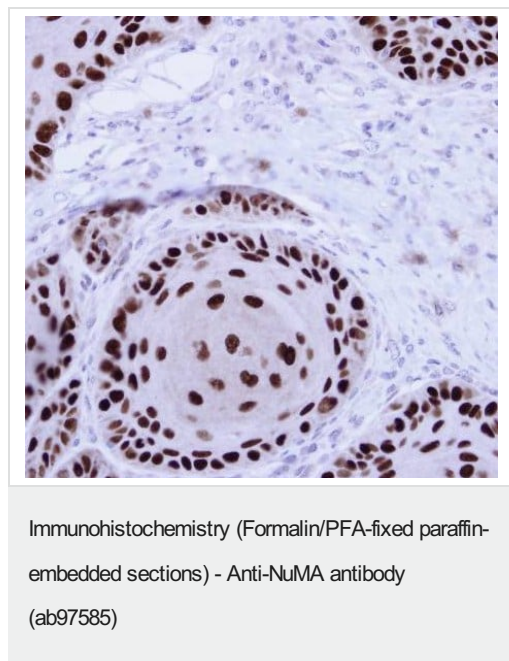
ab97585, at 1/200, staining paraformaldehyde-fixed A431 cells by Immunofluorescence (Panel 1) and merged with DNA probe (Panel 2).



Anti-NuMA antibody (ab97585) at 1/1000 dilution + A431 whole cell lysate at 30 µg

Predicted band size: 238 kDa

7.5% SDS PAGE



ab97585, at 1/100, staining paraffin-embedded Cal27 Xenograft by Immunohistochemistry.

Please note: All products are "FOR RESEARCH USE ONLY. NOT FOR USE IN DIAGNOSTIC PROCEDURES"

Our Abpromise to you: Quality guaranteed and expert technical support

- Replacement or refund for products not performing as stated on the datasheet
- Valid for 12 months from date of delivery
- Response to your inquiry within 24 hours
- We provide support in Chinese, English, French, German, Japanese and Spanish
- Extensive multi-media technical resources to help you
- We investigate all quality concerns to ensure our products perform to the highest standards

If the product does not perform as described on this datasheet, we will offer a refund or replacement. For full details of the Abpromise, please visit <https://www.abcam.co.jp/abpromise> or contact our technical team.

Terms and conditions

- Guarantee only valid for products bought direct from Abcam or one of our authorized distributors