




Anti-Nuf2 antibody ab122962

★★★★★ [1 Abreviews](#) [8 References](#) [画像数 2](#)

製品の概要

製品名	Anti-Nuf2 antibody
製品の詳細	Rabbit polyclonal to Nuf2
由来種	Rabbit
アプリケーション	適用あり: WB, ICC/IF
種交差性	交差種: Human 交差が予測される動物種: Rhesus monkey, Gorilla 
免疫原	Synthetic peptide: CGGDSYAKIDEKTAELKRKMFKMS , corresponding to C terminal amino acids 443-463 of Human Nuf2.  Run BLAST with  Run BLAST with
ポジティブ・コントロール	HeLa cells and cell lysate.
特記事項	<p>The Life Science industry has been in the grips of a reproducibility crisis for a number of years. Abcam is leading the way in addressing this with our range of recombinant monoclonal antibodies and knockout edited cell lines for gold-standard validation. Please check that this product meets your needs before purchasing.</p> <p>If you have any questions, special requirements or concerns, please send us an inquiry and/or contact our Support team ahead of purchase. Recommended alternatives for this product can be found below, along with publications, customer reviews and Q&As</p>

製品の特性

製品の状態	Liquid
保存方法	Shipped at 4°C. Upon delivery aliquot and store at -20°C. Avoid freeze / thaw cycles.
バッファー	pH: 6 Preservative: 0.05% Sodium azide Constituent: 99% Whole serum
精製度	Whole antiserum
ポリ/モノ	ポリクローナル
アイソタイプ	IgG

アプリケーション

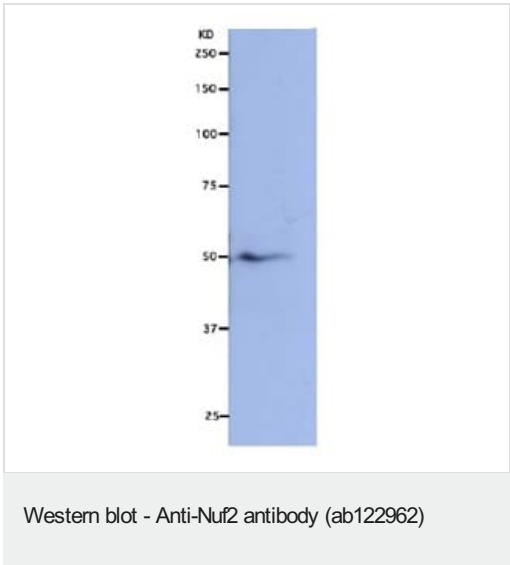
The Abpromise guarantee Abpromise保証は、 次のテスト済みアプリケーションにおけるab122962の使用に適用されます
アプリケーションノートには、推奨の開始希釈率がありますが、適切な希釈率につきましてはご検討ください。

アプリケーション	Abreviews	特記事項
WB		1/500 - 1/5000. Detects a band of approximately 50 kDa (predicted molecular weight: 54 kDa).
ICC/IF	★★★★★ (1)	1/200 - 1/1000. Methanol fixation is recommended for immunofluorescence staining.

ターゲット情報

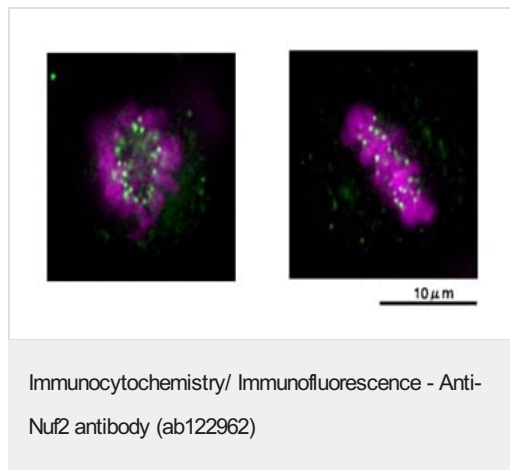
機能	Acts as a component of the essential kinetochore-associated NDC80 complex, which is required for chromosome segregation and spindle checkpoint activity. Required for kinetochore integrity and the organization of stable microtubule binding sites in the outer plate of the kinetochore.
配列類似性	Belongs to the NUF2 family.
翻訳後修飾	Can be phosphorylated by AURKA and AURKB.
細胞内局在	Nucleus. Chromosome > centromere > kinetochore. Localizes to kinetochores from late prophase to anaphase. Localizes specifically to the outer plate of the kinetochore.

画像



Anti-Nuf2 antibody (ab122962) at 1/5000 dilution + HeLa cell lysate

Predicted band size: 54 kDa



ab122962 at 1/500 dilution staining Nuf2 in Methanol-fixed HeLa cells by Immunofluorescence (green) showing localization to kinetochores at the stages of prometaphase to anaphase. Chromosomes were stained by DAPI (violet).

Please note: All products are "FOR RESEARCH USE ONLY. NOT FOR USE IN DIAGNOSTIC PROCEDURES"

Our Abpromise to you: Quality guaranteed and expert technical support

- Replacement or refund for products not performing as stated on the datasheet
- Valid for 12 months from date of delivery
- Response to your inquiry within 24 hours
- We provide support in Chinese, English, French, German, Japanese and Spanish
- Extensive multi-media technical resources to help you
- We investigate all quality concerns to ensure our products perform to the highest standards

If the product does not perform as described on this datasheet, we will offer a refund or replacement. For full details of the Abpromise, please visit <https://www.abcam.co.jp/abpromise> or contact our technical team.

Terms and conditions

- Guarantee only valid for products bought direct from Abcam or one of our authorized distributors