

### Anti-Nucleolin antibody [364-5] ab136649

★★★★★ **2 Abreviews**   **11 References**   画像数 7

#### 製品の概要

製品名	Anti-Nucleolin antibody [364-5]
製品の詳細	Mouse monoclonal [364-5] to Nucleolin
由来種	Mouse
アプリケーション	<b>適用あり:</b> ICC/IF, IHC-P, WB, IP, Flow Cyt
種交差性	<b>交差種:</b> Human <b>非交差種:</b> Mouse, Rat, Cow
免疫原	Tissue, cells or virus. This information is considered to be commercially sensitive.
ポジティブ・コントロール	HeLa and HDFn cells; HepG2, HDFn and SH-SY5Y whole cell lysates.
特記事項	<p>This antibody clone is manufactured by Abcam. If you require a custom buffer formulation or conjugation for your experiments, please contact <a href="mailto:orders@abcam.com">orders@abcam.com</a>.</p> <p>The Life Science industry has been in the grips of a reproducibility crisis for a number of years. Abcam is leading the way in addressing this with our range of recombinant monoclonal antibodies and knockout edited cell lines for gold-standard validation. Please check that this product meets your needs before purchasing.</p> <p>If you have any questions, special requirements or concerns, please send us an inquiry and/or contact our Support team ahead of purchase. Recommended alternatives for this product can be found below, along with publications, customer reviews and Q&amp;As</p> <p>Product was previously marketed under the MitoSciences sub-brand.</p>

#### 製品の特性

製品の状態	Liquid
保存方法	Shipped at 4°C. Store at +4°C short term (1-2 weeks). Store at -20°C or -80°C. Avoid freeze / thaw cycle.
バッファー	pH: 7.30 Preservative: 0.02% Sodium azide Constituents: 0.88% Sodium chloride, 0.36% HEPES
特記事項 (精製)	ab136649 is purified by biochemical fractionation. Near homogeneity as judged by SDS-PAGE.
ポリ/モノ	モノクローナル
クローン名	364-5

## アプリケーション

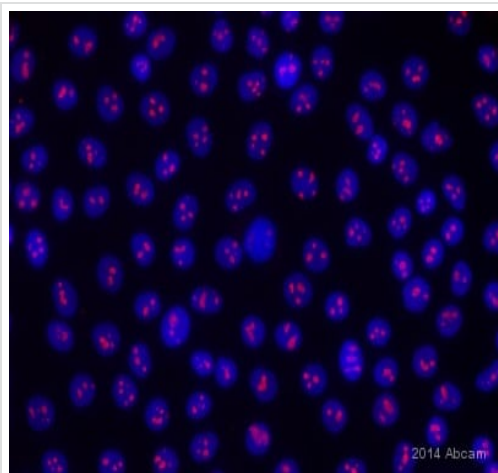
**The Abpromise guarantee** Abpromise保証は、次のテスト済みアプリケーションにおけるab136649の使用に適用されます  
アプリケーションノートには、推奨の開始希釈率がありますが、適切な希釈率につきましてはご検討ください。

アプリケーション	Abreviews	特記事項
ICC/IF	★★★★★ (2)	Use a concentration of 1 µg/ml.
IHC-P		Use a concentration of 5 µg/ml. Perform heat mediated antigen retrieval before commencing with IHC staining protocol.
WB		Use a concentration of 1 µg/ml. Predicted molecular weight: 76 kDa.
IP		Use a concentration of 1 µg/ml.
Flow Cyt		Use a concentration of 1 µg/ml. <b>ab170190</b> - Mouse monoclonal IgG1, is suitable for use as an isotype control with this antibody.

## ターゲット情報

機能	Nucleolin is the major nucleolar protein of growing eukaryotic cells. It is found associated with intranucleolar chromatin and pre-ribosomal particles. It induces chromatin decondensation by binding to histone H1. It is thought to play a role in pre-rRNA transcription and ribosome assembly. May play a role in the process of transcriptional elongation. Binds RNA oligonucleotides with 5'-UUAGGG-3' repeats more tightly than the telomeric single-stranded DNA 5'-TTAGGG-3' repeats.
配列類似性	Contains 4 RRM (RNA recognition motif) domains.
翻訳後修飾	Some glutamate residues are glycyated by TTL8. This modification occurs exclusively on glutamate residues and results in a glycine chain on the gamma-carboxyl group.
細胞内局在	Nucleus > nucleolus. Cytoplasm. Localized in cytoplasmic mRNP granules containing untranslated mRNAs.

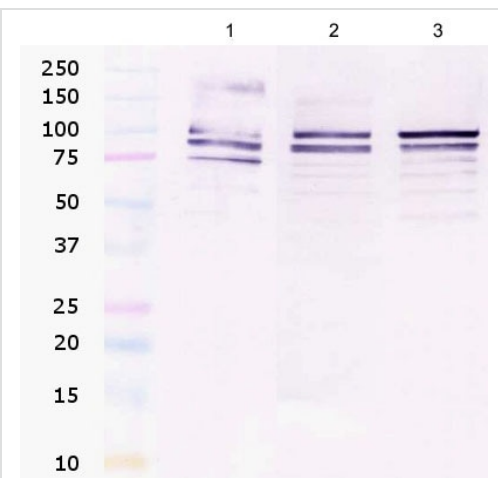
## 画像



Immunocytochemistry/ Immunofluorescence - Anti-Nucleolin antibody [364-5] (ab136649)

This image is courtesy of an anonymous Abreview

ab136649 staining Nucleolin in human breast cell line by ICC/IF (Immunocytochemistry/immunofluorescence). Cells were fixed with formaldehyde, permeabilized with 5% Triton X-100 in PBS and blocked with 5% BSA for 1 hour at 25°C. Samples were incubated with primary antibody (1/1000) for 1 hour. An undiluted Alexa Fluor® 546-conjugated anti-mouse IgG polyclonal was used as the secondary antibody.



Western blot - Anti-Nucleolin antibody [364-5] (ab136649)

**All lanes :** Anti-Nucleolin antibody [364-5] (ab136649) at 1 µg/ml

**Lane 1 :** HepG2 whole cell lysate at 20 µg

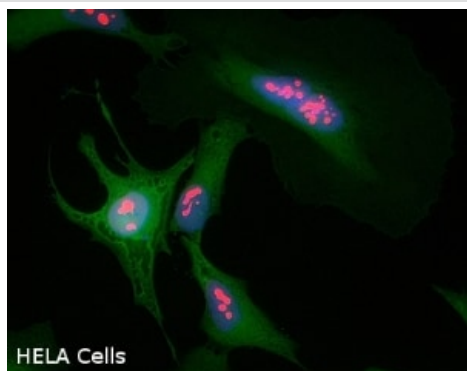
**Lane 2 :** HDFn whole cell lysate at 25 µg

**Lane 3 :** SH-SY5Y whole cell lysate at 20 µg

**Secondary**

**All lanes :** Goat polyclonal to Mouse IgG - AP at 1/3000 dilution

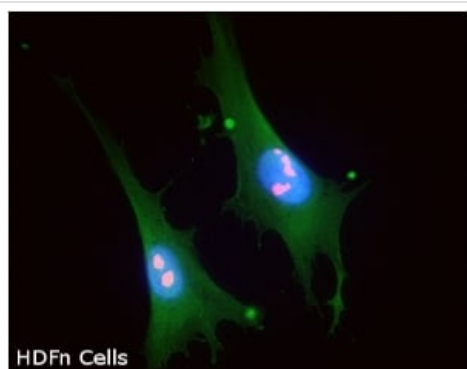
**Predicted band size:** 76 kDa



Immunocytochemistry/ Immunofluorescence - Anti-Nucleolin antibody [364-5] (ab136649)

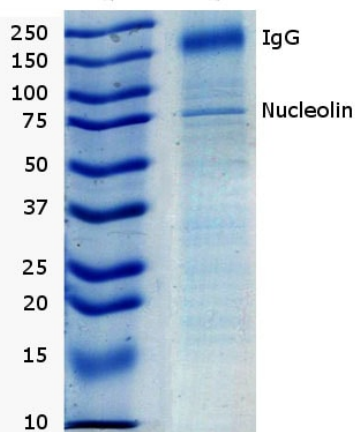
Immunocytochemical analysis of HeLa cells (paraformaldehyde fixed (4%, 20 min) and Triton X-100 permeabilized (0.1%, 15 min)) labelling Nucleolin with ab136649 at 1 µg/ml (red) and anti-GAPDH (**ab110305**) in green, as a counter stain.

Secondary: Alexa 594 goat anti-mouse IgG1 at a 1/1000 dilution.



Immunocytochemistry/ Immunofluorescence - Anti-Nucleolin antibody [364-5] (ab136649)

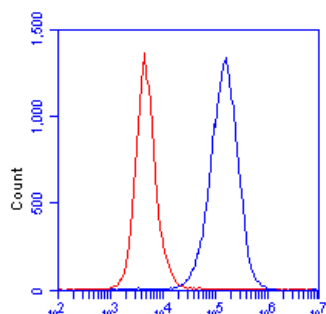
Immunocytochemical analysis of HDFn cells (paraformaldehyde fixed (4%, 20 min) and Triton X-100 permeabilized (0.1%, 15 min)) labelling Nucleolin with ab136649 at 1 µg/ml (red) and anti-GAPDH (**ab110305**) in green, as a counter stain. Secondary: Alexa 594 goat anti-mouse IgG1 at a 1/1000 dilution.



Immunoprecipitation - Anti-Nucleolin antibody [364-5] (ab136649)

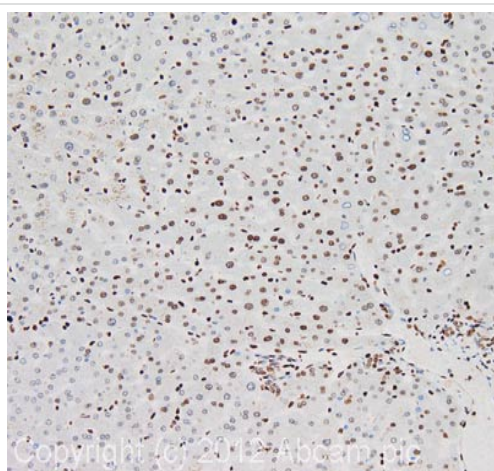
#### Detection of Nucleolin by Immunoprecipitation.

Nucleolin in HepG2 cell lysate (1 mg) was immunoprecipitated using 1 µg ab136649 antibody. The gel was stained with Coomassie brilliant blue G.



Flow Cytometry - Anti-Nucleolin antibody [364-5] (ab136649)

Flow Cytometric analysis of HeLa cells (fixed and permeabilized with methanol) labelling Nucleolin with ab136649 (blue) at 1 µg/ml or an equal amount of an isotype control antibody (red).



Immunohistochemistry (Formalin/PFA-fixed paraffin-embedded sections) - Anti-Nucleolin antibody [364-5] (ab136649)

IHC image of nucleolin staining in human liver HCC formalin fixed paraffin embedded tissue section, performed on a Leica Bond™ system using the standard protocol F. The section was pre-treated using heat mediated antigen retrieval with sodium citrate buffer (pH6, epitope retrieval solution 1) for 20 mins. The section was then incubated with ab136649, 5 µg/ml, for 15 mins at room temperature and detected using an HRP conjugated compact polymer system. DAB was used as the chromogen. The section was then counterstained with haematoxylin and mounted with DPX.

For other IHC staining systems (automated and non-automated) customers should optimize variable parameters such as antigen retrieval conditions, primary antibody concentration and antibody incubation times.

### **Our Abpromise to you: Quality guaranteed and expert technical support**

---

- Replacement or refund for products not performing as stated on the datasheet
- Valid for 12 months from date of delivery
- Response to your inquiry within 24 hours
  
- We provide support in Chinese, English, French, German, Japanese and Spanish
- Extensive multi-media technical resources to help you
- We investigate all quality concerns to ensure our products perform to the highest standards

If the product does not perform as described on this datasheet, we will offer a refund or replacement. For full details of the Abpromise, please visit <https://www.abcam.co.jp/abpromise> or contact our technical team.

### **Terms and conditions**

---

- Guarantee only valid for products bought direct from Abcam or one of our authorized distributors