

### Anti-NTH1 antibody [2660C1a] ab70726

★★★★★ [4 Abreviews](#) [2 References](#) [画像数 2](#)

#### 製品の概要

製品名	Anti-NTH1 antibody [2660C1a]
製品の詳細	Mouse monoclonal [2660C1a] to NTH1
由来種	Mouse
アプリケーション	<b>適用あり:</b> WB
種交差性	<b>交差種:</b> Mouse, Rat, Human
免疫原	Recombinant N-terminal fragment of human NTH1
ポジティブ・コントロール	Recombinant human NTH1. Whole cell lysates from human HEK293, mouse NIH3T3 and rat F2408 cells.
特記事項	<p>The Life Science industry has been in the grips of a reproducibility crisis for a number of years. Abcam is leading the way in addressing this with our range of recombinant monoclonal antibodies and knockout edited cell lines for gold-standard validation. Please check that this product meets your needs before purchasing.</p> <p>If you have any questions, special requirements or concerns, please send us an inquiry and/or contact our Support team ahead of purchase. Recommended alternatives for this product can be found below, along with publications, customer reviews and Q&amp;As</p>

#### 製品の特性

製品の状態	Liquid
保存方法	Shipped at 4°C. Upon delivery aliquot and store at -20°C. Avoid freeze / thaw cycles.
バッファー	<p>pH: 7.40</p> <p>Preservative: 0.05% Sodium azide</p> <p>Constituents: 1% BSA, PBS</p>
精製度	Protein G purified
特記事項 (精製)	ab70726 was purified using protein G column chromatography from culture supernatant of hybridoma cultured in a medium containing bovine IgG-depleted (approximately 95%) fetal bovine serum and filtered through a 0.22µm membrane.
ポリ/モノ	モノクローナル
クローン名	2660C1a
アイソタイプ	IgG1

## アプリケーション

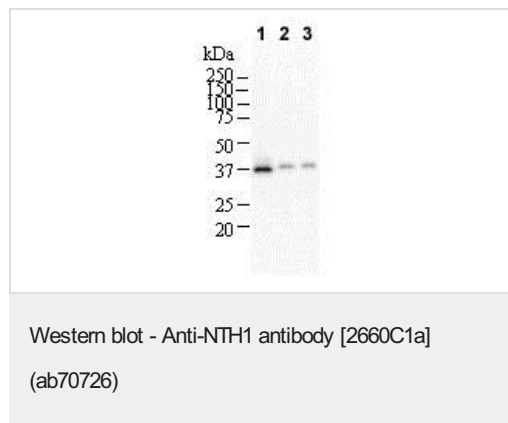
**The Abpromise guarantee**      Abpromise保証は、次のテスト済みアプリケーションにおけるab70726の使用に適用されます  
アプリケーションノートには、推奨の開始希釈率がありますが、適切な希釈率につきましてはご検討ください。

アプリケーション	Abreviews	特記事項
WB	★★★★★ (3)	Use a concentration of 0.2 - 2 µg/ml. Detects a band of approximately 37 kDa (predicted molecular weight: 34 kDa).

## ターゲット情報

機能	Has both an apurinic and/or apyrimidinic endonuclease activity and a DNA N-glycosylase activity. Incises damaged DNA at cytosines, thymines and guanines. Acts on a damaged strand, 5' from the damaged site. Required for the repair of both oxidative DNA damage and spontaneous mutagenic lesions.
組織特異性	Widely expressed with highest levels in heart and lowest levels in lung and liver.
配列類似性	Belongs to the Nth/MutY family.
発生段階	Expression levels are regulated during the cell cycle with increased levels during early and mid S-phase.
細胞内局在	Nucleus.

## 画像



**All lanes :** Anti-NTH1 antibody [2660C1a] (ab70726) at 0.2 µg/ml

**Lane 1 :** Whole cell lysate from human HEK293 cells

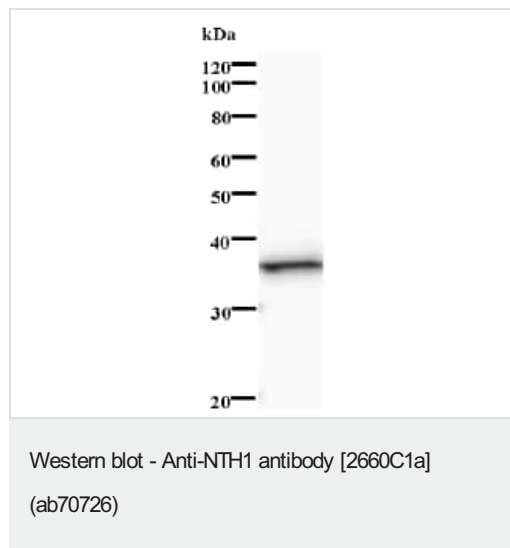
**Lane 2 :** Whole cell lysate from mouse NIH3T3 cells

**Lane 3 :** Whole cell lysate from rat F2408 cells

Lysates/proteins at 25 µg per lane.

**Predicted band size:** 34 kDa

**Observed band size:** 37 kDa



Anti-NTH1 antibody [2660C1a] (ab70726) at 0.2 µg/ml +  
immunised recombinant human NTH1 protein

**Predicted band size:** 34 kDa

**Observed band size:** 35 kDa

**Please note:** All products are "FOR RESEARCH USE ONLY. NOT FOR USE IN DIAGNOSTIC PROCEDURES"

### Our Abpromise to you: Quality guaranteed and expert technical support

---

- Replacement or refund for products not performing as stated on the datasheet
- Valid for 12 months from date of delivery
- Response to your inquiry within 24 hours
- We provide support in Chinese, English, French, German, Japanese and Spanish
- Extensive multi-media technical resources to help you
- We investigate all quality concerns to ensure our products perform to the highest standards

If the product does not perform as described on this datasheet, we will offer a refund or replacement. For full details of the Abpromise, please visit <https://www.abcam.co.jp/abpromise> or contact our technical team.

### Terms and conditions

---

- Guarantee only valid for products bought direct from Abcam or one of our authorized distributors