


Anti-Nrf2 antibody ab31163

★★★★☆ [24 Abreviews](#) [332 References](#) [画像数 4](#)

製品の概要

製品名	Anti-Nrf2 antibody
製品の詳細	Rabbit polyclonal to Nrf2
由来種	Rabbit
特異性	Some customers have used this antibody successfully in western blot however our latest tests were unsuccessful and therefore we can no longer guarantee this application. We would recommend ab62352 as an alternative.
アプリケーション	適用あり: IHC-P, ICC/IF
種交差性	交差種: Human 交差が予測される動物種: Mouse, Rat, Chicken, Cow 
免疫原	Synthetic peptide within Human Nrf2 aa 550 to the C-terminus. The exact sequence is proprietary. Database link: Q16236
特記事項	This product is FOR RESEARCH USE ONLY. For commercial use, please contact partnerships@abcam.com. The Life Science industry has been in the grips of a reproducibility crisis for a number of years. Abcam is leading the way in addressing this with our range of recombinant monoclonal antibodies and knockout edited cell lines for gold-standard validation. Please check that this product meets your needs before purchasing. If you have any questions, special requirements or concerns, please send us an inquiry and/or contact our Support team ahead of purchase. Recommended alternatives for this product can be found below, along with publications, customer reviews and Q&As

製品の特性

製品の状態	Liquid
保存方法	Shipped at 4°C. Upon delivery aliquot and store at -20°C. Avoid freeze / thaw cycles.
バッファー	pH: 7.60 Preservative: 0.1% Sodium azide Constituents: PBS, 1% BSA
精製度	Immunogen affinity purified
ポリ/モノ	ポリクローナル

アプリケーション

The Abpromise guarantee **Abpromise保証は、次のテスト済みアプリケーションにおけるab31163の使用に適用されず**

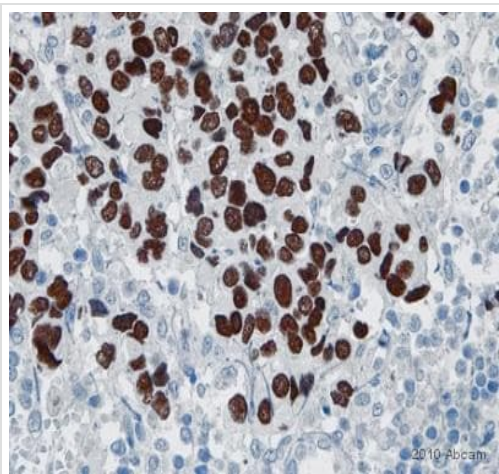
アプリケーションノートには、推奨の開始希釈率がありますが、適切な希釈率につきましてはご検討ください。

アプリケーション	Abreviews	特記事項
IHC-P	★★★★★ (5)	1/100. Perform heat mediated antigen retrieval via the pressure cooker method before commencing with IHC staining protocol.
ICC/IF	★★★★★ (4)	Use at an assay dependent concentration.

ターゲット情報

機能	Transcription activator that binds to antioxidant response (ARE) elements in the promoter regions of target genes. Important for the coordinated up-regulation of genes in response to oxidative stress. May be involved in the transcriptional activation of genes of the beta-globin cluster by mediating enhancer activity of hypersensitive site 2 of the beta-globin locus control region.
組織特異性	Widely expressed. Highest expression in adult muscle, kidney, lung, liver and in fetal muscle.
配列類似性	Belongs to the bZIP family. CNC subfamily. Contains 1 bZIP domain.
ドメイン	Acidic activation domain in the N-terminus, and DNA binding domain in the C-terminus.
翻訳後修飾	Phosphorylation of Ser-40 by PKC in response to oxidative stress dissociates NFE2L2 from its cytoplasmic inhibitor KEAP1, promoting its translocation into the nucleus.
細胞内局在	Cytoplasm > cytosol. Nucleus. Cytosolic under unstressed conditions, translocates into the nucleus upon induction by electrophilic agents.

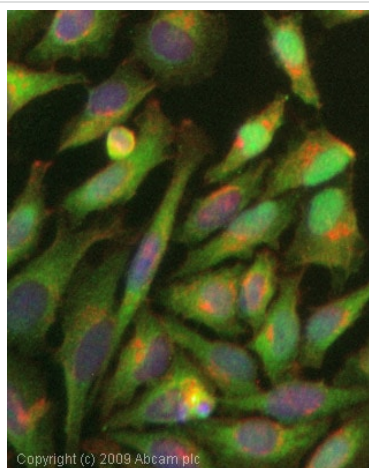
画像



Immunohistochemistry (Formalin/PFA-fixed paraffin-embedded sections) - Anti-Nrf2 antibody (ab31163)

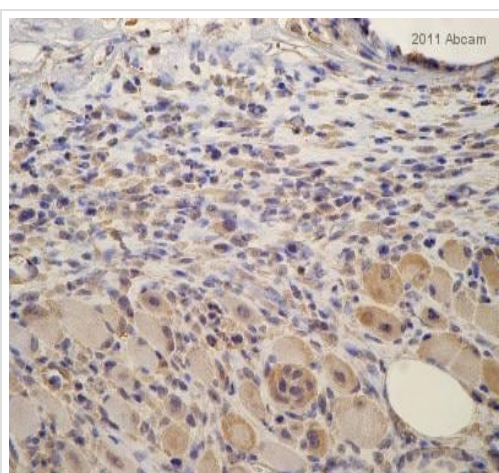
Image is courtesy of an anonymous Abreview

ab31163 staining Nrf2 in Human lymph node tissue sections by Immunohistochemistry (IHC-P - paraformaldehyde-fixed, paraffin-embedded sections). Tissue was fixed with paraformaldehyde and blocked with 10% serum for 1 hour at 20°C; antigen retrieval was by heat mediation in a citric buffer. Samples were incubated with primary antibody (1/100) for 12 hours at 4°C. A Biotin-conjugated Goat anti-rabbit polyclonal (1/200) was used as the secondary antibody.



Immunocytochemistry/ Immunofluorescence - Anti-Nrf2 antibody (ab31163)

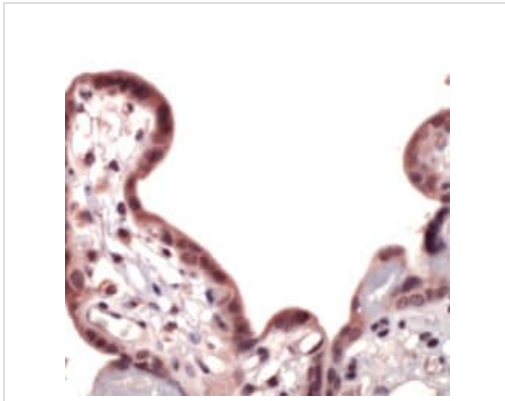
ICC/IF image of ab31163 stained HeLa cells. The cells were 4% PFA fixed (10 min) and then incubated in 1%BSA / 10% normal goat serum / 0.3M glycine in 0.1% PBS-Tween for 1h to permeabilise the cells and block non-specific protein-protein interactions. The cells were then incubated with the antibody (ab31163, 1µg/ml) overnight at +4°C. The secondary antibody (green) was Alexa Fluor® 488 goat anti-rabbit IgG (H+L) used at a 1/1000 dilution for 1h. Alexa Fluor® 594 WGA was used to label plasma membranes (red) at a 1/200 dilution for 1h. DAPI was used to stain the cell nuclei (blue) at a concentration of 1.43µM.



Immunohistochemistry (Formalin/PFA-fixed paraffin-embedded sections) - Anti-Nrf2 antibody (ab31163)

Image is courtesy of an anonymous Abreview

ab31163 staining Nrf2 in Mouse abdominal wall tissue sections by Immunohistochemistry (IHC-P - paraformaldehyde-fixed, paraffin-embedded sections). Tissue was fixed with formaldehyde and blocked with 5% serum for 1 hour at 21°C; antigen retrieval was by heat mediation in a citrate buffer. Samples were incubated with primary antibody (1/100 in milk) for 18 hours at 4°C. A Biotin-conjugated Goat anti-rabbit IgG polyclonal (1/500) was used as the secondary antibody.



ab31163 at 1/100 dilution, staining Nrf2 in human placenta by Immunohistochemistry (Formalin/ PFA fixed paraffin-embedded sections).

Immunohistochemistry (Formalin/PFA-fixed paraffin-embedded sections) - Anti-Nrf2 antibody (ab31163)

Please note: All products are "FOR RESEARCH USE ONLY. NOT FOR USE IN DIAGNOSTIC PROCEDURES"

Our Abpromise to you: Quality guaranteed and expert technical support

- Replacement or refund for products not performing as stated on the datasheet
- Valid for 12 months from date of delivery
- Response to your inquiry within 24 hours
- We provide support in Chinese, English, French, German, Japanese and Spanish
- Extensive multi-media technical resources to help you
- We investigate all quality concerns to ensure our products perform to the highest standards

If the product does not perform as described on this datasheet, we will offer a refund or replacement. For full details of the Abpromise, please visit <https://www.abcam.co.jp/abpromise> or contact our technical team.

Terms and conditions

- Guarantee only valid for products bought direct from Abcam or one of our authorized distributors