


Anti-NRF1 antibody ab34682

★★★★★ **3 Abreviews** **41 References** 画像数 4

製品の概要

製品名	Anti-NRF1 antibody
製品の詳細	Rabbit polyclonal to NRF1
由来種	Rabbit
特異性	ab34682 recognises NRF1 (also known as nuclear respiratory factor 1, alpha palindromic binding protein and alpha-pal).
アプリケーション	適用あり: WB, IHC-P, ICC/IF
種交差性	交差種: Human 交差が予測される動物種: Rat, Chicken, Dog, Chimpanzee, Zebrafish 
免疫原	Recombinant full length protein, corresponding to amino acids 1-534 of Mouse NRF1
特記事項	<p>The Life Science industry has been in the grips of a reproducibility crisis for a number of years. Abcam is leading the way in addressing this with our range of recombinant monoclonal antibodies and knockout edited cell lines for gold-standard validation. Please check that this product meets your needs before purchasing.</p> <p>If you have any questions, special requirements or concerns, please send us an inquiry and/or contact our Support team ahead of purchase. Recommended alternatives for this product can be found below, along with publications, customer reviews and Q&As</p>

製品の特性

製品の状態	Liquid
保存方法	Shipped at 4°C. Store at +4°C short term (1-2 weeks). Upon delivery aliquot. Store at -20°C or -80°C. Avoid freeze / thaw cycle.
バッファー	Preservative: 0.01% Sodium azide Constituents: 0.42% Potassium phosphate, 0.87% Sodium chloride
精製度	Protein A purified
ポリ/モノ	ポリクローナル
アイソタイプ	IgG

アプリケーション

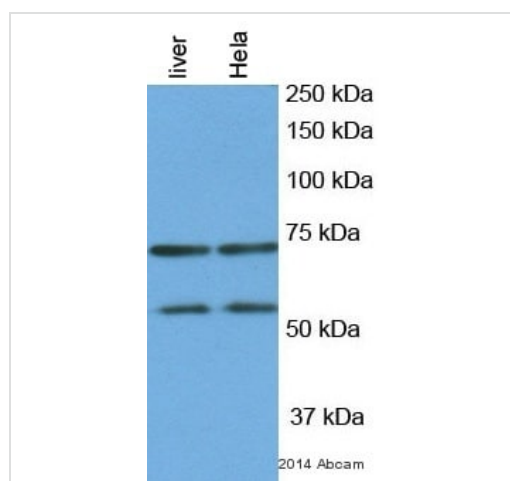
The Abpromise guarantee Abpromise保証は、次のテスト済みアプリケーションにおけるab34682の使用に適用されます
 アプリケーションノートには、推奨の開始希釈率がありますが、適切な希釈率につきましてはご検討ください。

アプリケーション	Abreviews	特記事項
WB	★★★★☆ (3)	1/500 - 1/2000. Detects a band of approximately 67 kDa (predicted molecular weight: 57 kDa). Splice variants exist for this protein that may result in the detection of lower molecular weight bands.
IHC-P		Use a concentration of 2 - 5 µg/ml.
ICC/IF		Use a concentration of 1 µg/ml.

ターゲット情報

機能	Transcription factor that activates the expression of the EIF2S1 (EIF2-alpha) gene. Links the transcriptional modulation of key metabolic genes to cellular growth and development. Implicated in the control of nuclear genes required for respiration, heme biosynthesis, and mitochondrial DNA transcription and replication.
組織特異性	Ubiquitously expressed with strongest expression in skeletal muscle.
配列類似性	Belongs to the NRF1/Ewg family.
翻訳後修飾	Phosphorylation enhances DNA binding.
細胞内局在	Nucleus.

画像



Western blot - Anti-NRF1 antibody (ab34682)
 This image is courtesy of an anonymous Abreview

All lanes : Anti-NRF1 antibody (ab34682) at 1/1000 dilution

Lane 1 : Mouse liver whole tissue lysate

Lane 2 : HeLa whole cell lysate

Lysates/proteins at 25 µg per lane.

Secondary

All lanes : HRP-conjugated goat anti-rabbit IgG polyclonal at 1/10000 dilution

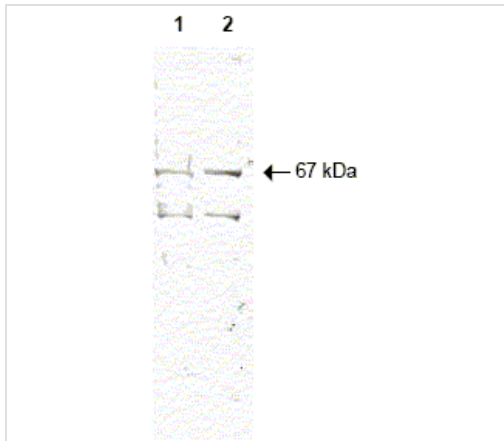
Developed using the ECL technique.

Performed under reducing conditions.

Predicted band size: 57 kDa

Observed band size: 55,67 kDa

Exposure time: 50 seconds



Western blot - Anti-NRF1 antibody (ab34682)

All lanes : Anti-NRF1 antibody (ab34682) at 1/500 dilution

Lane 1 : HeLa Nuclear extract

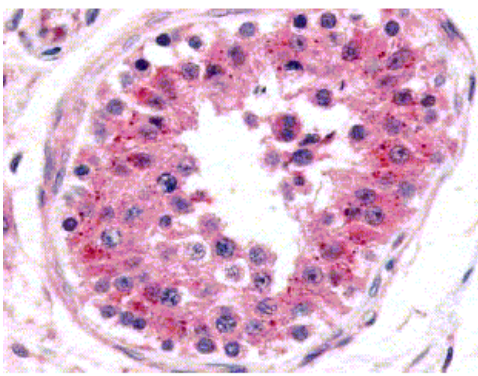
Lane 2 : HeLa Whole Cell lysate

Secondary

All lanes : IRDye™700 labelled goat-a-rabbit IgG at 1/2500 dilution

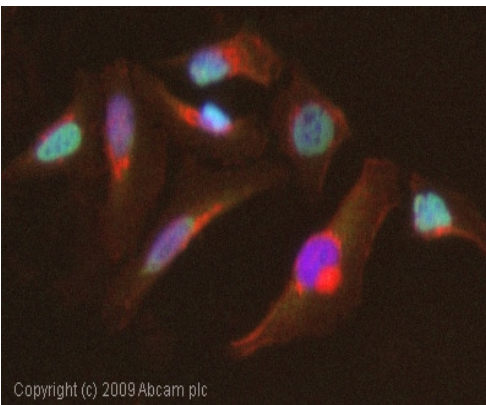
Predicted band size: 57 kDa

Observed band size: 67 kDa



Immunohistochemistry (Formalin/PFA-fixed paraffin-embedded sections) - Anti-NRF1 antibody (ab34682)

Purified anti-NRF1 antibody (ab34682) was used at 5µg/ml to detect NRF1 in human testis. Nuclear staining in lymphocytes can be observed.



Immunocytochemistry/ Immunofluorescence - Anti-NRF1 antibody (ab34682)

ICC/IF image of ab34682 stained HeLa cells. The cells were 4% PFA fixed (10 min) and then incubated in 1%BSA / 10% normal goat serum / 0.3M glycine in 0.1% PBS-Tween for 1h to permeabilise the cells and block non-specific protein-protein interactions. The cells were then incubated with the antibody (ab34682, 1µg/ml) overnight at +4°C. The secondary antibody (green) was Alexa Fluor® 488 goat anti-rabbit IgG (H+L) used at a 1/1000 dilution for 1h. Alexa Fluor® 594 WGA was used to label plasma membranes (red) at a 1/200 dilution for 1h. DAPI was used to stain the cell nuclei (blue) at a concentration of 1.43µM.

Please note: All products are "FOR RESEARCH USE ONLY. NOT FOR USE IN DIAGNOSTIC PROCEDURES"

Our Abpromise to you: Quality guaranteed and expert technical support

- Replacement or refund for products not performing as stated on the datasheet
- Valid for 12 months from date of delivery
- Response to your inquiry within 24 hours

- We provide support in Chinese, English, French, German, Japanese and Spanish
- Extensive multi-media technical resources to help you
- We investigate all quality concerns to ensure our products perform to the highest standards

If the product does not perform as described on this datasheet, we will offer a refund or replacement. For full details of the Abpromise, please visit <https://www.abcam.co.jp/abpromise> or contact our technical team.

Terms and conditions

- Guarantee only valid for products bought direct from Abcam or one of our authorized distributors