



Anti-NR3B antibody ab106808

画像数 1

製品の概要

製品名	Anti-NR3B antibody
製品の詳細	Goat polyclonal to NR3B
由来種	Goat
アプリケーション	適用あり: WB
種交差性	交差種: Human
免疫原	Synthetic peptide: C-EAPPHSGRPGSQ , corresponding to C terminal amino acids 1031-1042 of Human NR3B (NP_619635.1).  Run BLAST with  Run BLAST with
ポジティブ・コントロール	Human Brain (Cerebellum and Cerebral Cortex) lysates
特記事項	<p>The Life Science industry has been in the grips of a reproducibility crisis for a number of years. Abcam is leading the way in addressing this with our range of recombinant monoclonal antibodies and knockout edited cell lines for gold-standard validation. Please check that this product meets your needs before purchasing.</p> <p>If you have any questions, special requirements or concerns, please send us an inquiry and/or contact our Support team ahead of purchase. Recommended alternatives for this product can be found below, along with publications, customer reviews and Q&As</p>

製品の特性

製品の状態	Liquid
保存方法	Shipped at 4°C. Upon delivery aliquot and store at -20°C. Avoid freeze / thaw cycles.
バッファー	pH: 7.30 Preservative: 0.02% Sodium azide Constituents: Tris buffered saline, 0.5% BSA
精製度	Immunogen affinity purified
特記事項 (精製)	ab106808 is purified from goat serum by ammonium sulphate precipitation followed by antigen affinity chromatography using the immunizing peptide.
ポリモノ	ポリクローナル
アイソタイプ	IgG

アプリケーション

The Abpromise guarantee

Abpromise保証は、次のテスト済みアプリケーションにおけるab106808の使用に適用されます

アプリケーションノートには、推奨の開始希釈率がありますが、適切な希釈率につきましてはご検討ください。

アプリケーション	Abreviews	特記事項
WB		Use a concentration of 0.5 - 1.5 µg/ml. Detects a band of approximately 110 kDa (predicted molecular weight: 113 kDa). 1 hour primary incubation is recommended for this product.

ターゲット情報

機能

NMDA receptor subtype of glutamate-gated ion channels with reduced single-channel conductance, low calcium permeability and low voltage-dependent sensitivity to magnesium. Mediated by glycine.

配列類似性

Belongs to the glutamate-gated ion channel (TC 1.A.10.1) family. NR3B/GRIN3B subfamily.

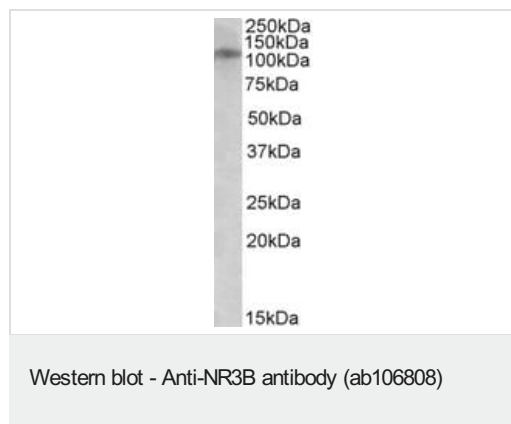
細胞内局在

Cell membrane. Cell junction > synapse > postsynaptic cell membrane. Requires the presence of GRIN1 to be targeted at the plasma membrane.

製品の状態

A subunit of the N-methyl-D-aspartate (NMDA) receptor, which belongs to the superfamily of glutamate-regulated ion channels that are present in neurons throughout the central nervous system.

画像



Anti-NR3B antibody (ab106808) at 0.5 µg/ml + Human cerebellum lysate (in RIPA buffer) at 35 µg

Developed using the ECL technique.

Predicted band size: 113 kDa

Primary incubation was 1 hour.

Please note: All products are "FOR RESEARCH USE ONLY. NOT FOR USE IN DIAGNOSTIC PROCEDURES"

Our Abpromise to you: Quality guaranteed and expert technical support

- Replacement or refund for products not performing as stated on the datasheet
- Valid for 12 months from date of delivery
- Response to your inquiry within 24 hours

- We provide support in Chinese, English, French, German, Japanese and Spanish
- Extensive multi-media technical resources to help you
- We investigate all quality concerns to ensure our products perform to the highest standards

If the product does not perform as described on this datasheet, we will offer a refund or replacement. For full details of the Abpromise, please visit <https://www.abcam.co.jp/abpromise> or contact our technical team.

Terms and conditions

- Guarantee only valid for products bought direct from Abcam or one of our authorized distributors