


Anti-NPY1R antibody ab91262

★★★★☆ **1 Abreviews** **3 References** 画像数 **2**

製品の概要

| | |
|--------------|---|
| 製品名 | Anti-NPY1R antibody |
| 製品の詳細 | Rabbit polyclonal to NPY1R |
| 由来種 | Rabbit |
| 特異性 | From Jan 2024, QC testing of replenishment batches of this polyclonal changed. All tested and expected application and reactive species combinations are still covered by our Abcam product promise. However, we no longer test all applications. For more information on a specific batch, please contact our Scientific Support who will be happy to help. |
| アプリケーション | 適用あり: ICC/IF, WB |
| 種交差性 | 交差種: Human 交差が予測される動物種: Mouse, Rat, Chicken, Cow, Dog, Pig, Macaque monkey  |
| 免疫原 | Synthetic peptide. This information is proprietary to Abcam and/or its suppliers. |
| ポジティブ・コントロール | This antibody gave a positive signal in both Human brain and heart tissue lysates, as well as the following whole cell lysates: HeLa; Caco2; U87MG. |
| 特記事項 | <p>The Life Science industry has been in the grips of a reproducibility crisis for a number of years. Abcam is leading the way in addressing this with our range of recombinant monoclonal antibodies and knockout edited cell lines for gold-standard validation. Please check that this product meets your needs before purchasing.</p> <p>If you have any questions, special requirements or concerns, please send us an inquiry and/or contact our Support team ahead of purchase. Recommended alternatives for this product can be found below, along with publications, customer reviews and Q&As</p> |

製品の特性

| | |
|-------|--|
| 製品の状態 | Liquid |
| 保存方法 | Shipped at 4°C. Store at +4°C short term (1-2 weeks). Upon delivery aliquot. Store at -20°C or -80°C. Avoid freeze / thaw cycle. |
| バッファー | pH: 7.40 Preservative: 0.02% Sodium azide Constituent: PBS |

Batches of this product that have a concentration < 1mg/ml may have BSA added as a stabilising

agent. If you would like information about the formulation of a specific lot, please contact our scientific support team who will be happy to help.

精製度

Immunogen affinity purified

ポリモノ

ポリクローナル

アイソタイプ

IgG

アプリケーション

The Abpromise guarantee

Abpromise保証は、次のテスト済みアプリケーションにおけるab91262の使用に適用されます

アプリケーションノートには、推奨の開始希釈率がありますが、適切な希釈率につきましてはご確認ください。

| アプリケーション | Abreviews | 特記事項 |
|----------|-----------|--|
| ICC/IF | | Use a concentration of 5 µg/ml. |
| WB | ★★★★★ (1) | Use a concentration of 1 µg/ml. Detects a band of approximately 44 kDa (predicted molecular weight: 44 kDa). |

ターゲット情報

機能

Receptor for neuropeptide Y and peptide YY. The rank order of affinity of this receptor for pancreatic polypeptides is NPY > [Pro-34] PYY, PYY and [Leu-31, Pro-34] NPY > NPY (2-36) > [Ile-31, Gln-34] PP and PYY (3-36) > PP > NPY free acid.

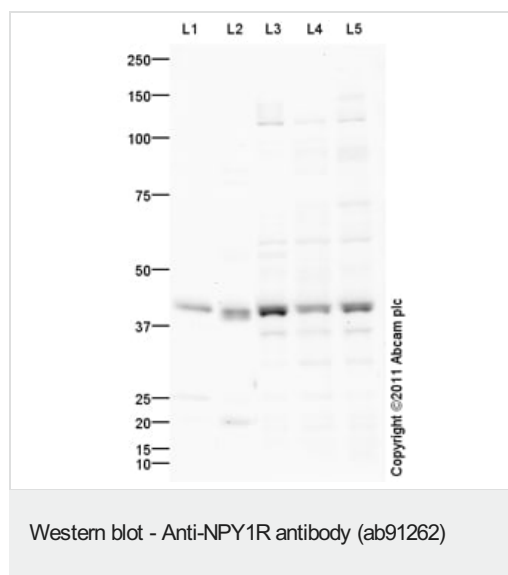
配列類似性

Belongs to the G-protein coupled receptor 1 family.

細胞内局在

Cell membrane.

画像



All lanes : Anti-NPY1R antibody (ab91262) at 1 µg/ml

Lane 1 : Human brain tissue lysate - total protein ([ab29466](#))

Lane 2 : Human heart tissue lysate - total protein ([ab29431](#))

Lane 3 : U-87 MG (Human glioblastoma astrocytoma) Whole Cell Lysate

Lane 4 : Caco 2 (Human colonic carcinoma cell line) Whole Cell Lysate

Lane 5 : HeLa (Human epithelial carcinoma cell line) Whole Cell Lysate

Lysates/proteins at 10 µg per lane.

Secondary

All lanes : Goat Anti-Rabbit IgG H&L (HRP) preadsorbed ([ab97080](#)) at 1/5000 dilution

Developed using the ECL technique.

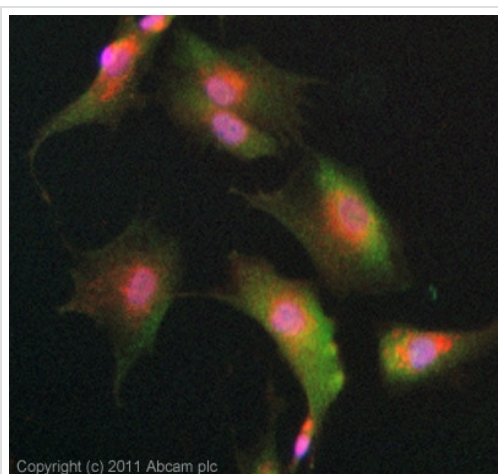
Performed under reducing conditions.

Predicted band size: 44 kDa

Observed band size: 44 kDa

Additional bands at: 118 kDa. We are unsure as to the identity of these extra bands.

Exposure time: 20 minutes



Immunocytochemistry/ Immunofluorescence - Anti-NPY1R antibody (ab91262)

ICC/IF image of ab91262 stained SKNSH cells. The cells were 4% formaldehyde fixed (10 min) and then incubated in 1%BSA / 10% normal goat serum / 0.3M glycine in 0.1% PBS-Tween for 1h to permeabilise the cells and block non-specific protein-protein interactions. The cells were then incubated with the antibody (ab91262, 5µg/ml) overnight at +4°C. The secondary antibody (green) was ab91262, DyLight® 488 goat anti-rabbit IgG (H+L) used at a 1/250 dilution for 1h. Alexa Fluor® 594 WGA was used to label plasma membranes (red) at a 1/200 dilution for 1h. DAPI was used to stain the cell nuclei (blue) at a concentration of 1.43µM.

Please note: All products are "FOR RESEARCH USE ONLY. NOT FOR USE IN DIAGNOSTIC PROCEDURES"

Our Abpromise to you: Quality guaranteed and expert technical support

- Replacement or refund for products not performing as stated on the datasheet
- Valid for 12 months from date of delivery
- Response to your inquiry within 24 hours
- We provide support in Chinese, English, French, German, Japanese and Spanish
- Extensive multi-media technical resources to help you
- We investigate all quality concerns to ensure our products perform to the highest standards

If the product does not perform as described on this datasheet, we will offer a refund or replacement. For full details of the Abpromise, please visit <https://www.abcam.co.jp/abpromise> or contact our technical team.

Terms and conditions

- Guarantee only valid for products bought direct from Abcam or one of our authorized distributors