

Anti-NPR-A antibody ab14356

★★★★☆ [3 Abreviews](#) [13 References](#) [画像数 1](#)

製品の概要

| | |
|----------|---|
| 製品名 | Anti-NPR-A antibody |
| 製品の詳細 | Rabbit polyclonal to NPR-A |
| 由来種 | Rabbit |
| アプリケーション | 適用あり: ICC, IHC-Fr, IHC-P, ICC/IF, Flow Cyt, WB |
| 種交差性 | 交差種: Rat, Human |
| 免疫原 | Synthetic peptide corresponding to Human NPR-A aa 294-308 conjugated to keyhole limpet haemocyanin. Sequence: LKQLKHLAYEQFNFT |

(Peptide available as [ab28437](#), [ab49403](#))

 [Run BLAST with](#)

 [Run BLAST with](#)

特記事項

The Life Science industry has been in the grips of a reproducibility crisis for a number of years. Abcam is leading the way in addressing this with our range of recombinant monoclonal antibodies and knockout edited cell lines for gold-standard validation. Please check that this product meets your needs before purchasing.

If you have any questions, special requirements or concerns, please send us an inquiry and/or contact our Support team ahead of purchase. Recommended alternatives for this product can be found below, along with publications, customer reviews and Q&As

製品の特性

| | |
|--------|---|
| 製品の状態 | Liquid |
| 保存方法 | Shipped at 4°C. Upon delivery aliquot and store at -20°C. Avoid freeze / thaw cycles. |
| 精製度 | Whole antiserum |
| ポリ/モノ | ポリクローナル |
| アイソタイプ | IgG |

アプリケーション

The Abpromise guarantee

Abpromise保証は、次のテスト済みアプリケーションにおけるab14356の使用に適用されます

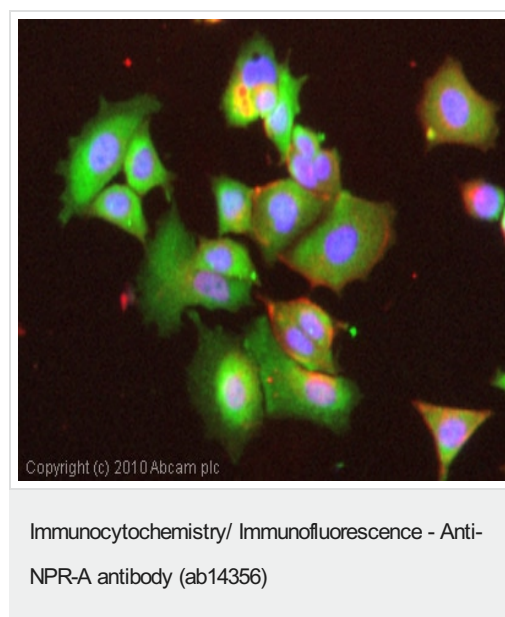
アプリケーションノートには、推奨の開始希釈率がありますが、適切な希釈率につきましてはご検討ください。

| アプリケーション | Abreviews | 特記事項 |
|----------|-----------|--|
| ICC | | Use at an assay dependent concentration. |
| IHC-Fr | | Use at an assay dependent concentration. |
| IHC-P | ★★★★★ (1) | Use at an assay dependent concentration. |
| ICC/IF | | 1/300. |
| Flow Cyt | ★★★★★ (1) | Use at an assay dependent concentration. ab171870 - Rabbit polyclonal IgG, is suitable for use as an isotype control with this antibody. |
| WB | ★★★★★ (1) | Use at an assay dependent concentration. |

ターゲット情報

| | |
|-------|---|
| 機能 | Receptor for the atrial natriuretic peptide NPPA/ANP and the brain natriuretic peptide NPPB/BNP which are potent vasoactive hormones playing a key role in cardiovascular homeostasis. Has guanylate cyclase activity upon binding of the ligand. |
| 配列類似性 | Belongs to the adenylyl cyclase class-4/guanylyl cyclase family. Contains 1 guanylate cyclase domain. Contains 1 protein kinase domain. |
| 翻訳後修飾 | Phosphorylation of the protein kinase-like domain is required for full activation by ANP. |
| 細胞内局在 | Membrane. |

画像



ICC/IF image of ab14356 stained MCF7 cells. The cells were 4% PFA fixed (10 min) and then incubated in 1%BSA / 10% normal goat serum / 0.3M glycine in 0.1% PBS-Tween for 1h to permeabilise the cells and block non-specific protein-protein interactions. The cells were then incubated with the antibody (ab14356, 5µg/ml) overnight at +4°C. The secondary antibody (green) was Alexa Fluor® 488 goat anti-rabbit IgG (H+L) used at a 1/1000 dilution for 1h. Alexa Fluor® 594 WGA was used to label plasma membranes (red) at a 1/200 dilution for 1h. DAPI was used to stain the cell nuclei (blue) at a concentration of 1.43µM.

Please note: All products are "FOR RESEARCH USE ONLY. NOT FOR USE IN DIAGNOSTIC PROCEDURES"

Our Abpromise to you: Quality guaranteed and expert technical support

- Replacement or refund for products not performing as stated on the datasheet
- Valid for 12 months from date of delivery
- Response to your inquiry within 24 hours
- We provide support in Chinese, English, French, German, Japanese and Spanish
- Extensive multi-media technical resources to help you
- We investigate all quality concerns to ensure our products perform to the highest standards

If the product does not perform as described on this datasheet, we will offer a refund or replacement. For full details of the Abpromise, please visit <https://www.abcam.co.jp/abpromise> or contact our technical team.

Terms and conditions

- Guarantee only valid for products bought direct from Abcam or one of our authorized distributors