


Anti-NPHS2 antibody ab50339

★★★★★ [10 Abreviews](#) [83 References](#) [画像数 5](#)

製品の概要

製品名	Anti-NPHS2 antibody
製品の詳細	Rabbit polyclonal to NPHS2
由来種	Rabbit
アプリケーション	適用あり: IHC-P, WB
種交差性	交差種: Mouse, Rat 交差が予測される動物種: Human 
免疫原	Synthetic peptide corresponding to Human NPHS2 aa 367-383 conjugated to keyhole limpet haemocyanin (Cysteine residue). Synthetic peptide conjugated to KLH by an N-terminal Cysteine residue linker. Sequence: SKPVEPLNPKKKDSPML

 [Run BLAST with](#)

 [Run BLAST with](#)

特記事項

The Life Science industry has been in the grips of a reproducibility crisis for a number of years. Abcam is leading the way in addressing this with our range of recombinant monoclonal antibodies and knockout edited cell lines for gold-standard validation. Please check that this product meets your needs before purchasing.

If you have any questions, special requirements or concerns, please send us an inquiry and/or contact our Support team ahead of purchase. Recommended alternatives for this product can be found below, along with publications, customer reviews and Q&As

製品の特性

製品の状態	Liquid
保存方法	Shipped at 4°C. Store at +4°C short term (1-2 weeks). Upon delivery aliquot. Store at -20°C or -80°C. Avoid freeze / thaw cycle.
バッファー	pH: 7.40 Preservative: 0.097% Sodium azide Constituent: 0.0268% PBS
精製度	Immunogen affinity purified
特記事項(精製)	ab50339 is affinity-purified using the immunizing peptide immobilized on agarose.
ポリ/モノ	ポリクローナル

アプリケーション

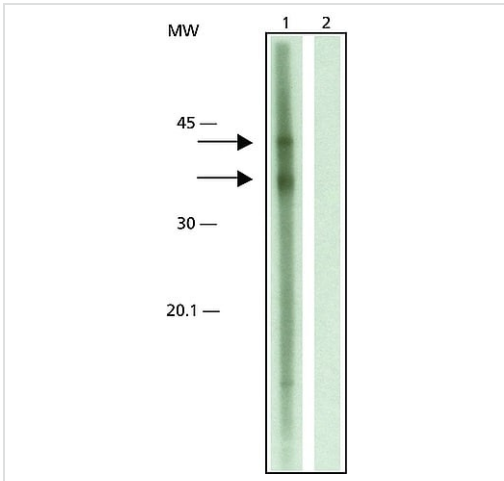
The Abpromise guarantee Abpromise保証は、次のテスト済みアプリケーションにおけるab50339の使用に適用されず
アプリケーションノートには、推奨の開始希釈率がありますが、適切な希釈率につきましてはご検討ください。

アプリケーション	Abreviews	特記事項
IHC-P	★★★★★ (5)	Use a concentration of 0.2 µg/ml.
WB		Use a concentration of 0.5 - 1 µg/ml. Predicted molecular weight: 42 kDa. Additional weak bands may be detected when immunoblotting various extract preparations. Detection of podocin (doublet) by immunoblotting is specifically inhibited with the immunizing peptide. The upper band may represent a post-translational modified variant.

ターゲット情報

機能	Plays a role in the regulation of glomerular permeability, acting probably as a linker between the plasma membrane and the cytoskeleton.
組織特異性	Almost exclusively expressed in the podocytes of fetal and mature kidney glomeruli.
関連疾患	Defects in NPHS2 are the cause of nephrotic syndrome type 2 (NPHS2) [MIM:600995]. It is a renal disorder characterized clinically by childhood onset of proteinuria, hypoalbuminemia, hyperlipidemia, and edema. Kidney biopsies show non-specific histologic changes such as focal segmental glomerulosclerosis and diffuse mesangial proliferation. The disorder is resistant to steroid treatment and progresses to end-stage renal failure in the first or second decades. Some patients show later onset of the disorder.
配列類似性	Belongs to the band 7/mec-2 family.
細胞内局在	Cell membrane.

画像



Western blot - Anti-NPHS2 antibody (ab50339)

All lanes : Anti-NPHS2 antibody (ab50339) at 1 $\mu\text{g/ml}$

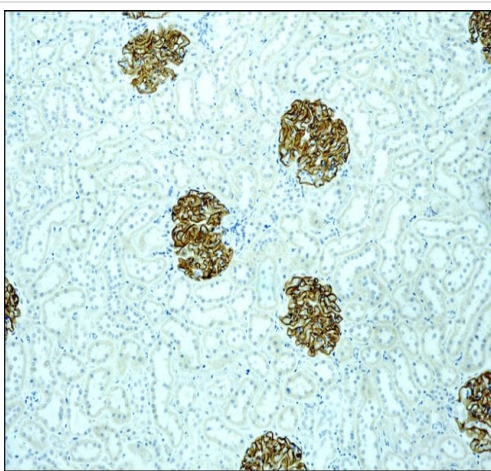
Lane 1 : Rat glomeruli tissue extract

Lane 2 : Rat glomeruli tissue extract with Immunizing peptide

Secondary

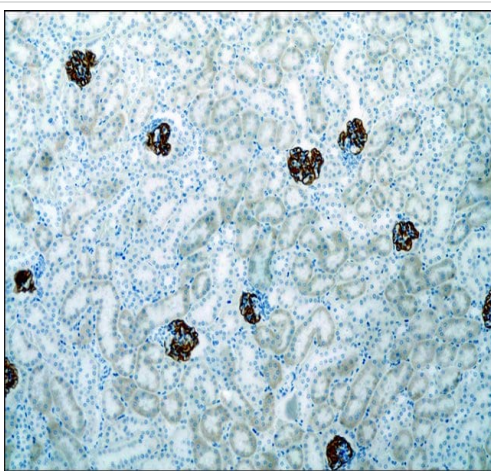
All lanes : Anti_rabbit IgG-peroxidase

Predicted band size: 42 kDa



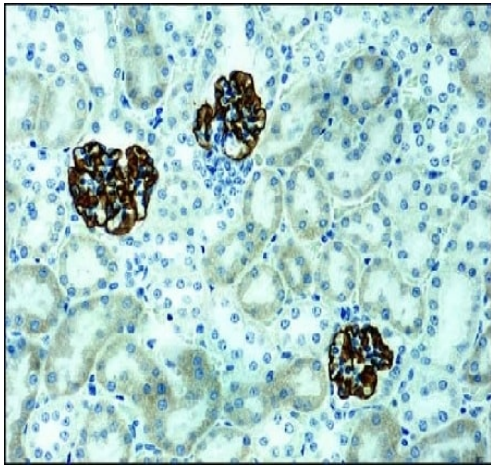
Immunohistochemistry (Formalin/PFA-fixed paraffin-embedded sections) - Anti-NPHS2 antibody (ab50339)

Immunohistochemical analysis of formalin-fixed, paraffin-embedded rat kidney tissue using ab50339 at 0.2 $\mu\text{g/ml}$.



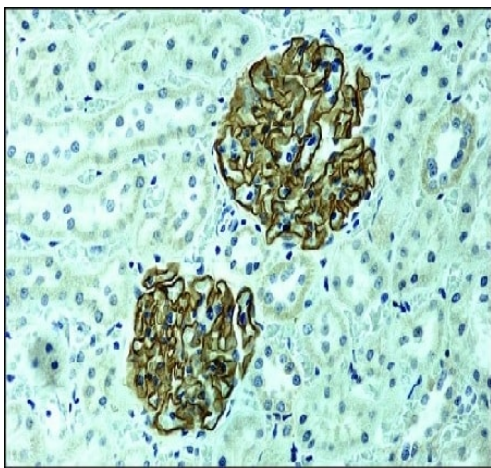
Immunohistochemistry (Formalin/PFA-fixed paraffin-embedded sections) - Anti-NPHS2 antibody (ab50339)

Immunohistochemical analysis of formalin-fixed, paraffin-embedded mouse kidney tissue using ab50339 at 0.2 $\mu\text{g/ml}$.



Immunohistochemical analysis of paraffin-embedded mouse kidney tissue labeling NPHS2 with ab50339 at 0.2 µg/ml.

Immunohistochemistry (Formalin/PFA-fixed paraffin-embedded sections) - Anti-NPHS2 antibody (ab50339)



Immunohistochemical analysis of paraffin-embedded rat kidney tissue labeling NPHS2 with ab50339 at 0.2 µg/ml.

Immunohistochemistry (Formalin/PFA-fixed paraffin-embedded sections) - Anti-NPHS2 antibody (ab50339)

Please note: All products are "FOR RESEARCH USE ONLY. NOT FOR USE IN DIAGNOSTIC PROCEDURES"

Our Abpromise to you: Quality guaranteed and expert technical support

- Replacement or refund for products not performing as stated on the datasheet
- Valid for 12 months from date of delivery
- Response to your inquiry within 24 hours
- We provide support in Chinese, English, French, German, Japanese and Spanish
- Extensive multi-media technical resources to help you
- We investigate all quality concerns to ensure our products perform to the highest standards

If the product does not perform as described on this datasheet, we will offer a refund or replacement. For full details of the Abpromise, please visit <https://www.abcam.co.jp/abpromise> or contact our technical team.

Terms and conditions

- Guarantee only valid for products bought direct from Abcam or one of our authorized distributors