


Anti-NPEPPS antibody ab77643

画像数 1

製品の概要

| | |
|--------------|---|
| 製品名 | Anti-NPEPPS antibody |
| 製品の詳細 | Goat polyclonal to NPEPPS |
| 由来種 | Goat |
| アプリケーション | 適用あり: WB |
| 種交差性 | 交差種: Human 交差が予測される動物種: Mouse, Rat, Horse, Cow, Dog, Xenopus laevis, Chimpanzee, Macaque monkey  |
| 免疫原 | Synthetic peptide: C-KRDAESIHQYLLQRK , corresponding to C terminal amino acids 899-913 of Human NPEPPS (NP_006301.3) Run BLAST with Run BLAST with |
| ポジティブ・コントロール | Human Brain (Cerebral Cortex) lysate. |
| 特記事項 | <p>The Life Science industry has been in the grips of a reproducibility crisis for a number of years. Abcam is leading the way in addressing this with our range of recombinant monoclonal antibodies and knockout edited cell lines for gold-standard validation. Please check that this product meets your needs before purchasing.</p> <p>If you have any questions, special requirements or concerns, please send us an inquiry and/or contact our Support team ahead of purchase. Recommended alternatives for this product can be found below, along with publications, customer reviews and Q&As</p> |

製品の特性

| | |
|-----------|---|
| 製品の状態 | Liquid |
| 保存方法 | Shipped at 4°C. Upon delivery aliquot and store at -20°C or -80°C. Avoid repeated freeze / thaw cycles. |
| バッファー | pH: 7.30 Preservative: 0.02% Sodium azide Constituents: 0.5% BSA, Tris buffered saline |
| 精製度 | Immunogen affinity purified |
| 特記事項 (精製) | Purified from goat serum by ammonium sulphate precipitation followed by antigen affinity chromatography using the immunizing peptide. |

ポリモノ
アイソタイプ

ポリクローナル
IgG

アプリケーション

The Abpromise guarantee Abpromise保証は、次のテスト済みアプリケーションにおけるab77643の使用に適用されず
アプリケーションノートには、推奨の開始希釈率がありますが、適切な希釈率につきましてはご確認ください。

| アプリケーション | Abreviews | 特記事項 |
|----------|-----------|------|
| WB | | |

追加情報

peptide ELISA: Use at an assay dependent dilution. Detection limit dilution: 1/4000
WB: Use at a concentration of 0.2 - 0.5 µg/ml. Detects a band of approximately 110 kDa (predicted molecular weight: 103 kDa).

Not yet tested in other applications.

Optimal dilutions/concentrations should be determined by the end user.

ターゲット情報

機能

Aminopeptidase with broad substrate specificity for several peptides. Involved in proteolytic events essential for cell growth and viability. May act as regulator of neuropeptide activity. Plays a role in the antigen-processing pathway for MHC class I molecules. Involved in the N-terminal trimming of cytotoxic T-cell epitope precursors. Digests the poly-Q peptides found in many cellular proteins. Digests tau from normal brain more efficiently than tau from Alzheimer disease brain.

組織特異性

Detected in liver, epithelium of renal tubules, epithelium of small and large intestine, gastric epithelial cells, and alveoli of the lung (at protein level).

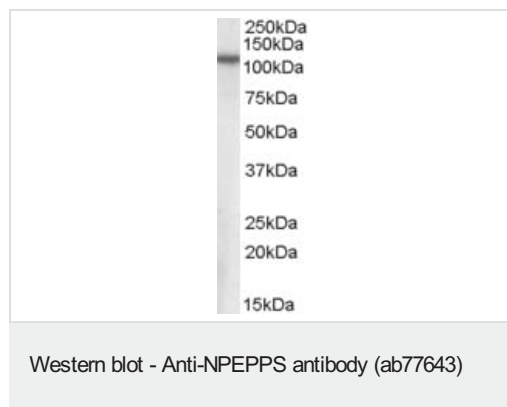
配列類似性

Belongs to the peptidase M1 family.

細胞内局在

Cytoplasm > cytosol. Nucleus.

画像



Anti-NPEPPS antibody (ab77643) at 0.3 µg/ml + Human cerebral cortex lysate in RIPA buffer at 35 µg

Predicted band size: 103 kDa

Observed band size: 110 kDa

Our Abpromise to you: Quality guaranteed and expert technical support

- Replacement or refund for products not performing as stated on the datasheet
- Valid for 12 months from date of delivery
- Response to your inquiry within 24 hours

- We provide support in Chinese, English, French, German, Japanese and Spanish
- Extensive multi-media technical resources to help you
- We investigate all quality concerns to ensure our products perform to the highest standards

If the product does not perform as described on this datasheet, we will offer a refund or replacement. For full details of the Abpromise, please visit <https://www.abcam.co.jp/abpromise> or contact our technical team.

Terms and conditions

- Guarantee only valid for products bought direct from Abcam or one of our authorized distributors