

Anti-NPAT antibody ab99436

画像数 2

製品の概要

製品名	Anti-NPAT antibody
製品の詳細	Rabbit polyclonal to NPAT
由来種	Rabbit
アプリケーション	適用あり: IHC-P, IP
種交差性	交差種: Human 交差が予測される動物種: Chimpanzee, Gorilla, Orangutan 
免疫原	Synthetic peptide corresponding to Human NPAT aa 700-800. Database link: Q14207
ポジティブ・コントロール	Human 293T cell line.
特記事項	<p>The Life Science industry has been in the grips of a reproducibility crisis for a number of years. Abcam is leading the way in addressing this with our range of recombinant monoclonal antibodies and knockout edited cell lines for gold-standard validation. Please check that this product meets your needs before purchasing.</p> <p>If you have any questions, special requirements or concerns, please send us an inquiry and/or contact our Support team ahead of purchase. Recommended alternatives for this product can be found below, along with publications, customer reviews and Q&As</p>

製品の特性

製品の状態	Liquid
保存方法	Shipped at 4°C. Upon delivery aliquot and store at -20°C. Avoid freeze / thaw cycles.
バッファー	pH: 7 Preservative: 0.09% Sodium azide Constituent: Tris citrate/phosphate
精製度	Immunogen affinity purified
ポリ/モノ	ポリクローナル
アイソタイプ	IgG

アプリケーション

The Abpromise guarantee

Abpromise保証は、次のテスト済みアプリケーションにおけるab99436の使用に適用されます

アプリケーションノートには、推奨の開始希釈率がありますが、適切な希釈率につきましてはご確認ください。

アプリケーション	Abreviews	特記事項
IHC-P		1/1000 - 1/5000. Perform heat mediated antigen retrieval with citrate buffer pH 6 before commencing with IHC staining protocol.
IP		Use at 2-5 µg/mg of lysate.

ターゲット情報

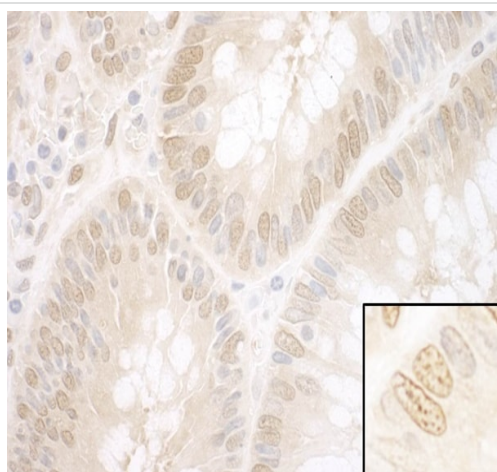
関連性

NPAT is a 240kDa protein that associates with and can be phosphorylated by the CDK cyclin E-CDK2. The protein level of NPAT peaks at the G1/S boundary. Overexpression of NPAT accelerates S-phase entry suggesting that NPAT plays a role in S-phase entry.

細胞内局在

Nuclear

画像



Immunohistochemistry (Formalin/PFA-fixed paraffin-embedded sections) analysis of human colon carcinoma tissue labelling NPAT with ab99436 at 1/1000 (1 µg/ml). Detection: DAB.

Immunohistochemistry (Formalin/PFA-fixed paraffin-embedded sections) - Anti-NPAT antibody (ab99436)



Immunoprecipitation - Anti-NPAT antibody (ab99436)

Immunoprecipitation : 1 mg of 293T cell lysate

immunoprecipitated with ab99436 at 3 µg/mg lysate; 20% of immunoprecipitate loaded in lane

Western Blot: an antibody that recognizes a downstream epitope of NPAT at 1 µg/ml

developed using the ECL technique

Exposure time : 30 seconds

Predicted band size : 154 kDa

Please note: All products are "FOR RESEARCH USE ONLY. NOT FOR USE IN DIAGNOSTIC PROCEDURES"

Our Abpromise to you: Quality guaranteed and expert technical support

- Replacement or refund for products not performing as stated on the datasheet
- Valid for 12 months from date of delivery
- Response to your inquiry within 24 hours
- We provide support in Chinese, English, French, German, Japanese and Spanish
- Extensive multi-media technical resources to help you
- We investigate all quality concerns to ensure our products perform to the highest standards

If the product does not perform as described on this datasheet, we will offer a refund or replacement. For full details of the Abpromise, please visit <https://www.abcam.co.jp/abpromise> or contact our technical team.

Terms and conditions

- Guarantee only valid for products bought direct from Abcam or one of our authorized distributors