

# Anti-NPAT antibody [2648C6a] ab70595

**4 References**   [画像数 1](#)

### 製品の概要

製品名	Anti-NPAT antibody [2648C6a]
製品の詳細	Mouse monoclonal [2648C6a] to NPAT
由来種	Mouse
アプリケーション	<b>適用あり:</b> WB
種交差性	<b>交差種:</b> Recombinant fragment
免疫原	Recombinant fragment (Human) from an internal sequence of NPAT.
ポジティブ・コントロール	Recombinant human NPAT.
特記事項	<p>The Life Science industry has been in the grips of a reproducibility crisis for a number of years. Abcam is leading the way in addressing this with our range of recombinant monoclonal antibodies and knockout edited cell lines for gold-standard validation. Please check that this product meets your needs before purchasing.</p> <p>If you have any questions, special requirements or concerns, please send us an inquiry and/or contact our Support team ahead of purchase. Recommended alternatives for this product can be found below, along with publications, customer reviews and Q&amp;As</p>

### 製品の特性

製品の状態	Liquid
保存方法	Shipped at 4°C. Upon delivery aliquot and store at -20°C. Avoid freeze / thaw cycles.
バッファー	<p>pH: 7.40</p> <p>Preservative: 0.05% Sodium azide</p> <p>Constituents: 0.1136% Dibasic monohydrogen sodium phosphate, 1% BSA, 0.03% Potassium phosphate, 0.812% Sodium chloride, 0.1312% Sodium phosphate, 0.0225% Potassium chloride, 0.0204% Monobasic dihydrogen potassium phosphate</p>
精製度	Protein G purified
特記事項 (精製)	This antibody was purified using protein G column chromatography from culture supernatant of hybridoma cultured in a medium containing bovine IgG-depleted (approximately 95%) fetal bovine serum and filtered through a 0.22 µm membrane.
ポリ/モノ	モノクローナル
クローン名	2648C6a

## アプリケーション

## The Abpromise guarantee

**Abpromise保証は、**次のテスト済みアプリケーションにおけるab70595の使用に適用されます

アプリケーションノートには、推奨の開始希釈率がありますが、適切な希釈率につきましてはご確認ください。

アプリケーション	Abreviews	特記事項
WB		Use at an assay dependent concentration. Predicted molecular weight: 240 kDa.

## ターゲット情報

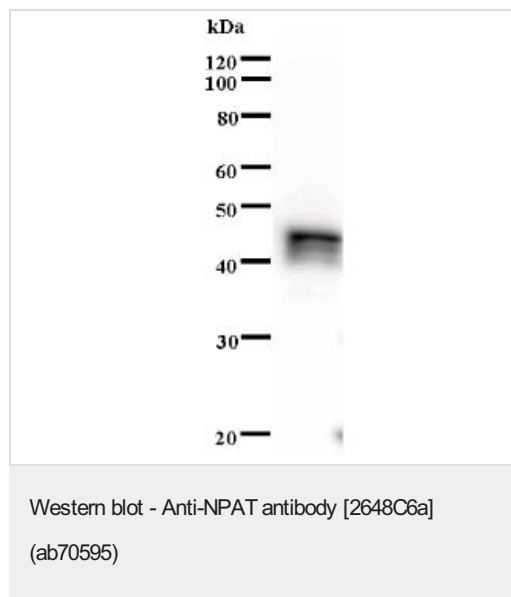
## 関連性

NPAT is a 240kDa protein that associates with and can be phosphorylated by the CDK cyclin E–CDK2. The protein level of NPAT peaks at the G1/S boundary. Overexpression of NPAT accelerates S-phase entry suggesting that NPAT plays a role in S-phase entry.

## 細胞内局在

Nuclear

## 画像



Anti-NPAT antibody [2648C6a] (ab70595) + immunising recombinant fragment

**Predicted band size:** 240 kDa

**Observed band size:** 44 kDa

The molecular weight of the band on the western blot does not correspond to the molecular weight of the natural protein because only a fragment of the protein was used.

**Please note:** All products are "FOR RESEARCH USE ONLY. NOT FOR USE IN DIAGNOSTIC PROCEDURES"

## Our Abpromise to you: Quality guaranteed and expert technical support

- Replacement or refund for products not performing as stated on the datasheet
- Valid for 12 months from date of delivery
- Response to your inquiry within 24 hours

- We provide support in Chinese, English, French, German, Japanese and Spanish
- Extensive multi-media technical resources to help you
- We investigate all quality concerns to ensure our products perform to the highest standards

If the product does not perform as described on this datasheet, we will offer a refund or replacement. For full details of the Abpromise, please visit <https://www.abcam.co.jp/abpromise> or contact our technical team.

#### **Terms and conditions**

---

- Guarantee only valid for products bought direct from Abcam or one of our authorized distributors