


# Anti-NOR1/TEC antibody ab94507

**7 References** [画像数 1](#)

### 製品の概要

製品名	Anti-NOR1/TEC antibody
製品の詳細	Rabbit polyclonal to NOR1/TEC
由来種	Rabbit
アプリケーション	<b>適用あり:</b> WB <b>適用なし:</b> IHC-P
種交差性	<b>交差種:</b> Mouse <b>交差が予測される動物種:</b> Rat, Human, Pig 
免疫原	Synthetic peptide corresponding to Human NOR1/TEC aa 200-300 conjugated to keyhole limpet haemocyanin. (Peptide available as <b>ab107791</b> )
ポジティブ・コントロール	This antibody gave a positive signal in NIH3T3 whole cell lysate.
特記事項	<p>The Life Science industry has been in the grips of a reproducibility crisis for a number of years. Abcam is leading the way in addressing this with our range of recombinant monoclonal antibodies and knockout edited cell lines for gold-standard validation. Please check that this product meets your needs before purchasing.</p> <p>If you have any questions, special requirements or concerns, please send us an inquiry and/or contact our Support team ahead of purchase. Recommended alternatives for this product can be found below, along with publications, customer reviews and Q&amp;As</p>

### 製品の特性

製品の状態	Liquid
保存方法	Shipped at 4°C. Store at +4°C short term (1-2 weeks). Upon delivery aliquot. Store at -20°C or -80°C. Avoid freeze / thaw cycle.
バッファー	pH: 7.40 Preservative: 0.02% Sodium azide Constituent: PBS
	Batches of this product that have a concentration < 1mg/ml may have BSA added as a stabilising agent. If you would like information about the formulation of a specific lot, please contact our scientific support team who will be happy to help.

精製度	Immunogen affinity purified
ポリ/モノ	ポリクローナル
アイソタイプ	IgG

アプリケーション

The Abpromise guarantee      **Abpromise保証は、次のテスト済みアプリケーションにおけるab94507の使用に適用されます**  
アプリケーションノートには、推奨の開始希釈率がありますが、適切な希釈率につきましてはご検討ください。

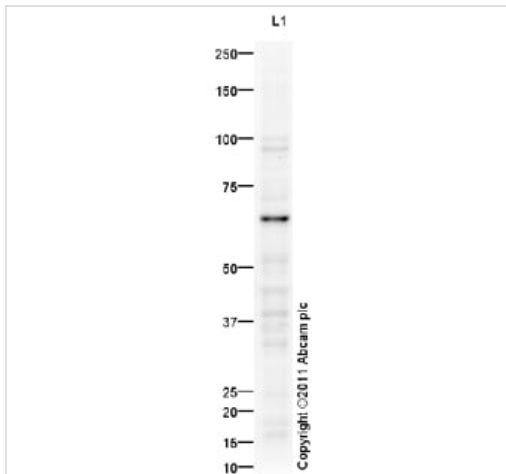
アプリケーション	Abreviews	特記事項
WB		Use a concentration of 1 µg/ml. Detects a band of approximately 68 kDa (predicted molecular weight: 68 kDa).

追加情報      Is unsuitable for IHC-P.

ターゲット情報

機能	Binds to the B1A response-element.
組織特異性	Isoform alpha is highly expressed in skeletal muscle. Isoform beta is highly expressed in skeletal muscle and low expressed in fetal brain and placenta.
関連疾患	Defects in NR4A3 are a cause of Ewing sarcoma (ES) [MIM:612219]. A highly malignant, metastatic, primitive small round cell tumor of bone and soft tissue that affects children and adolescents. It belongs to the Ewing sarcoma family of tumors, a group of morphologically heterogeneous neoplasms that share the same cytogenetic features. They are considered neural tumors derived from cells of the neural crest. Ewing sarcoma represents the less differentiated form of the tumors. Note=A chromosomal aberration involving NR4A3 is found in patients with Erwing sarcoma. Translocation t(9;22)(q22-31;q11-12) with EWSR1. Note=A chromosomal aberration involving NR4A3 is a cause of a form of extraskeletal myxoid chondrosarcomas (EMC). Translocation t(9;17)(q22;q11) with TAF2N.
配列類似性	Belongs to the nuclear hormone receptor family. NR4 subfamily. Contains 1 nuclear receptor DNA-binding domain.
細胞内局在	Nucleus.

画像



Western blot - Anti-NOR1/TEC antibody (ab94507)

Anti-NOR1/TEC antibody (ab94507) at 1 µg/ml + NIH 3T3 (Mouse embryonic fibroblast cell line) Whole Cell Lysate at 10 µg

### Secondary

Goat Anti-Rabbit IgG H&L (HRP) preadsorbed ([ab97080](#)) at 1/5000 dilution

Developed using the ECL technique.

Performed under reducing conditions.

**Predicted band size:** 68 kDa

**Observed band size:** 68 kDa

**Exposure time:** 20 minutes

**Please note:** All products are "FOR RESEARCH USE ONLY. NOT FOR USE IN DIAGNOSTIC PROCEDURES"

### Our Abpromise to you: Quality guaranteed and expert technical support

- Replacement or refund for products not performing as stated on the datasheet
- Valid for 12 months from date of delivery
- Response to your inquiry within 24 hours
- We provide support in Chinese, English, French, German, Japanese and Spanish
- Extensive multi-media technical resources to help you
- We investigate all quality concerns to ensure our products perform to the highest standards

If the product does not perform as described on this datasheet, we will offer a refund or replacement. For full details of the Abpromise, please visit <https://www.abcam.co.jp/abpromise> or contact our technical team.

### Terms and conditions

- Guarantee only valid for products bought direct from Abcam or one of our authorized distributors