

# Anti-NOL3 antibody ab2002

**1 References** [画像数 3](#)

### 製品の概要

---

製品名	Anti-NOL3 antibody
製品の詳細	Rabbit polyclonal to NOL3
由来種	Rabbit
アプリケーション	<b>適用あり:</b> IHC-P, WB
種交差性	<b>交差種:</b> Human
免疫原	Synthetic peptide corresponding to Human NOL3 aa 191-208 (C terminal). Sequence: PDPEPEPDFEERDESEDS  (Peptide available as <a href="#">ab8371</a> )
ポジティブ・コントロール	HeLa whole cell lysate
特記事項	<p>The Life Science industry has been in the grips of a reproducibility crisis for a number of years. Abcam is leading the way in addressing this with our range of recombinant monoclonal antibodies and knockout edited cell lines for gold-standard validation. Please check that this product meets your needs before purchasing.</p> <p>If you have any questions, special requirements or concerns, please send us an inquiry and/or contact our Support team ahead of purchase. Recommended alternatives for this product can be found below, along with publications, customer reviews and Q&amp;As</p>

 [Run BLAST with](#)

 [Run BLAST with](#)

### 製品の特性

---

製品の状態	Liquid
保存方法	Shipped at 4°C. Upon delivery aliquot and store at -20°C or -80°C. Avoid repeated freeze / thaw cycles.
バッファー	pH: 7.2 Preservative: 0.02% Sodium azide
精製度	Immunogen affinity purified
ポリ/モノ	ポリクローナル
アイソタイプ	IgG

## アプリケーション

**The Abpromise guarantee**      **Abpromise保証は、次のテスト済みアプリケーションにおけるab2002の使用に適用されます**  
アプリケーションノートには、推奨の開始希釈率がありますが、適切な希釈率につきましてはご検討ください。

アプリケーション	Abreviews	特記事項
IHC-P		
WB		

### 追加情報

IHC-P: Use at an assay dependent dilution.

WB: Use at an assay dependent dilution. Detects a band of approximately 25 kDa. Can be blocked with **ARC (C-term) peptide (human)**.

Not tested in other applications.

Optimal dilutions/concentrations should be determined by the end user.

## ターゲット情報

### 機能

Isoform 1 may be involved in RNA splicing.

Isoform 2 may inhibit apoptosis.

### 組織特異性

Highly expressed in heart and skeletal muscle. Detected at low levels in placenta, liver, kidney and pancreas.

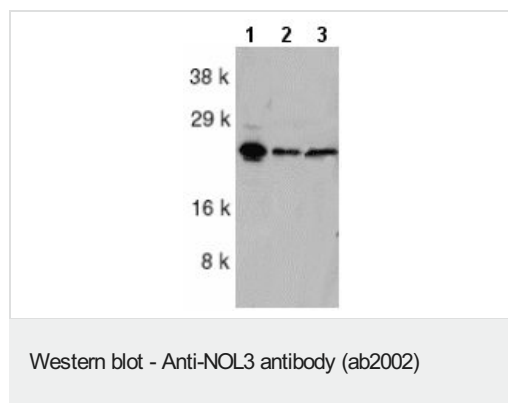
### 配列類似性

Contains 1 CARD domain.

### 細胞内局在

Cytoplasm and Nucleus > nucleolus.

## 画像



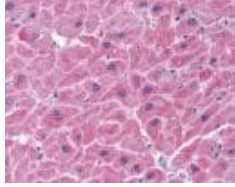
**All lanes** : Anti-NOL3 antibody (ab2002) at 1/1000 dilution

**Lane 1** : HeLa whole cell lysate

**Lane 2** : KB whole cell lysate

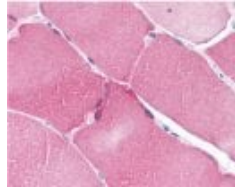
**Lane 3** : A549 whole cell lysate

**Observed band size:** 25 kDa



Immunohistochemistry of NOL3 in human heart tissue with Anti-NOL3 (ab2002) at 5 µg/ml.

Immunohistochemistry (Formalin/PFA-fixed paraffin-embedded sections) - Anti-NOL3 antibody (ab2002)



Immunohistochemistry of NOL3 in skeletal muscle with Anti-NOL3 (ab2002) at 5 µg/ml.

Immunohistochemistry (Formalin/PFA-fixed paraffin-embedded sections) - Anti-NOL3 antibody (ab2002)

**Please note:** All products are "FOR RESEARCH USE ONLY. NOT FOR USE IN DIAGNOSTIC PROCEDURES"

### Our Abpromise to you: Quality guaranteed and expert technical support

---

- Replacement or refund for products not performing as stated on the datasheet
- Valid for 12 months from date of delivery
- Response to your inquiry within 24 hours
- We provide support in Chinese, English, French, German, Japanese and Spanish
- Extensive multi-media technical resources to help you
- We investigate all quality concerns to ensure our products perform to the highest standards

If the product does not perform as described on this datasheet, we will offer a refund or replacement. For full details of the Abpromise, please visit <https://www.abcam.co.jp/abpromise> or contact our technical team.

### Terms and conditions

---

- Guarantee only valid for products bought direct from Abcam or one of our authorized distributors