


Anti-Nodal antibody [EP2058Y] ab81287

リコンビナント **RabMAb**

3 References [画像数 2](#)

製品の概要

製品名	Anti-Nodal antibody [EP2058Y]
製品の詳細	Rabbit monoclonal [EP2058Y] to Nodal
由来種	Rabbit
特異性	ab81287 detects Pro-Nodal and Nodal. This antibody is unable to detect signal in endogenous samples.
アプリケーション	適用あり: WB 適用なし: IHC-P or IP
種交差性	交差種: Human 交差が予測される動物種: Mouse 
免疫原	Synthetic peptide within Human Nodal aa 300-400 (C terminal). The exact sequence is proprietary.
ポジティブ・コントロール	Recombinant nodal protein.
特記事項	<p>This product is a recombinant monoclonal antibody, which offers several advantages including:</p> <ul style="list-style-type: none"> - High batch-to-batch consistency and reproducibility - Improved sensitivity and specificity - Long-term security of supply - Animal-free production <p>For more information see here.</p> <p>Our RabMAb[®] technology is a patented hybridoma-based technology for making rabbit monoclonal antibodies. For details on our patents, please refer to RabMAb[®] patents.</p> <p>Rat: We have preliminary internal testing data to indicate this antibody may not react with this species. Please contact us for more information.</p>

製品の特性

製品の状態	Liquid
保存方法	Shipped at 4°C. Store at +4°C short term (1-2 weeks). Upon delivery aliquot. Store at -20°C long term.
バッファー	pH: 7.20

	Preservative: 0.01% Sodium azide
	Constituents: 9% PBS, 40% Glycerol (glycerin, glycerine), 0.05% BSA, 50% Tissue culture supernatant
精製度	Protein A purified
ポリ/モノ	モノクローナル
クローン名	EP2058Y
アイソタイプ	IgG

アプリケーション

The Abpromise guarantee **Abpromise保証は、**次のテスト済みアプリケーションにおけるab81287の使用に適用されます
アプリケーションノートには、推奨の開始希釈率がありますが、適切な希釈率につきましてはご確認ください。

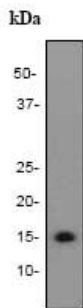
アプリケーション	Abreviews	特記事項
WB		1/2000. Predicted molecular weight: 39 kDa. (Pro-Nodal) and 13 kDa (Nodal).

追加情報 Is unsuitable for IHC-P or IP.

ターゲット情報

機能	Essential for mesoderm formation and axial patterning during embryonic development.
関連疾患	Defects in NODAL are the cause of visceral heterotaxy autosomal type 5 (HTX5) [MIM:270100]. A form of visceral heterotaxy, a complex disorder due to disruption of the normal left-right asymmetry of the thoracoabdominal organs. It results in an abnormal arrangement of visceral organs, and a wide variety of congenital defects. Clinical features of visceral heterotaxy autosomal type 5 include situs inversus viscerum or situs ambiguus, congenital heart defect, transposition of the great vessels ventricular septal defect, atrial septal defect, truncuscommunis, and dextrocardia.
配列類似性	Belongs to the TGF-beta family.
細胞内局在	Secreted.

画像



Western blot - Anti-Nodal antibody [EP2058Y]
(ab81287)

Anti-Nodal antibody [EP2058Y] (ab81287) at 1/2000 dilution +
Recombinant nodal protein at 10ng

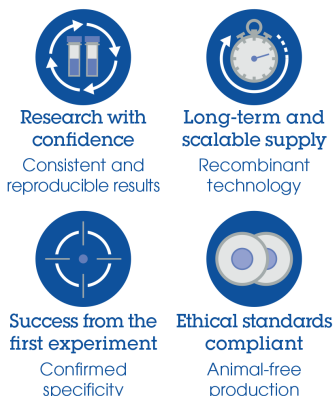
Secondary

HRP conjugated goat anti-rabbit at 1/2000 dilution

Predicted band size: 39 kDa

Observed band size: 15 kDa

Why choose a recombinant antibody?



Anti-Nodal antibody [EP2058Y] (ab81287)

Please note: All products are "FOR RESEARCH USE ONLY. NOT FOR USE IN DIAGNOSTIC PROCEDURES"

Our Abpromise to you: Quality guaranteed and expert technical support

- Replacement or refund for products not performing as stated on the datasheet
- Valid for 12 months from date of delivery
- Response to your inquiry within 24 hours
- We provide support in Chinese, English, French, German, Japanese and Spanish
- Extensive multi-media technical resources to help you
- We investigate all quality concerns to ensure our products perform to the highest standards

If the product does not perform as described on this datasheet, we will offer a refund or replacement. For full details of the Abpromise, please visit <https://www.abcam.co.jp/abpromise> or contact our technical team.

Terms and conditions

- Guarantee only valid for products bought direct from Abcam or one of our authorized distributors