

Anti-NME2 antibody [EPR8351] ab131329

リコンビナント **RabMAb**

3 References [画像数 9](#)

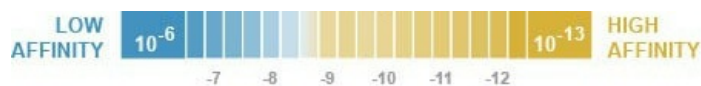
製品の概要

製品名	Anti-NME2 antibody [EPR8351]
製品の詳細	Rabbit monoclonal [EPR8351] to NME2
由来種	Rabbit
特異性	<p>The immunogen used to raise this antibody shares 85% homology with human NME1. Cross-reactivity with this protein has not been confirmed experimentally.</p> <p>The mouse, rat and Chinese hamster recommendation is based on the WB results. We do not guarantee IHC-P for mouse, rat and Chinese hamster.</p>
アプリケーション	適用あり: Flow Cyt (Intra), WB, IHC-P, ICC/IF
種交差性	交差種: Mouse, Rat, Human, Chinese hamster
免疫原	Synthetic peptide. This information is proprietary to Abcam and/or its suppliers.
ポジティブ・コントロール	WB: LnCaP, PC-12, CHO, 293T, Human spleen and Human thyroid lysates. Rat and mouse kidney tissue lysates; IHC: Human kidney tissue and human cerebellum tissue; Flow Cyt (intra): HEK293 cells; ICC/IF: CHO-S cells.
特記事項	<p>This product is a recombinant monoclonal antibody, which offers several advantages including:</p> <ul style="list-style-type: none"> - High batch-to-batch consistency and reproducibility - Improved sensitivity and specificity - Long-term security of supply - Animal-free production <p>For more information see here.</p> <p>Our RabMAb[®] technology is a patented hybridoma-based technology for making rabbit monoclonal antibodies. For details on our patents, please refer to RabMAb[®] patents.</p>

製品の特性

製品の状態	Liquid
保存方法	Shipped at 4°C. Store at +4°C short term (1-2 weeks). Upon delivery aliquot. Store at -20°C long term. Avoid freeze / thaw cycle.
解離定数 (K _D 値)	K _D = 3.35 x 10 ⁻¹⁰ M





[Learn more about K_D](#)

バッファー	pH: 7.20 Preservative: 0.01% Sodium azide Constituents: 59% PBS, 40% Glycerol (glycerin, glycerine), 0.05% BSA
精製度	Protein A purified
ポリ/モノ	モノクローナル
クローン名	EPR8351
アイソタイプ	IgG

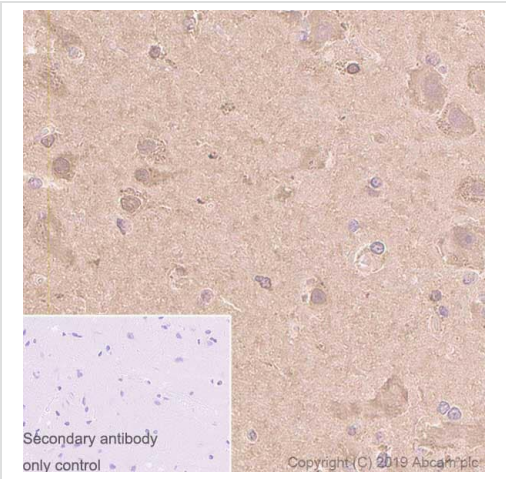
アプリケーション

The Abpromise guarantee **Abpromise保証は、次のテスト済みアプリケーションにおけるab131329の使用に適用されます**
アプリケーションノートには、推奨の開始希釈率がありますが、適切な希釈率につきましてはご検討ください。

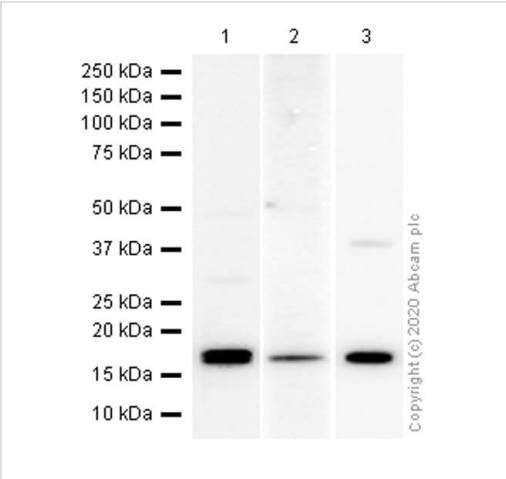
アプリケーション	Abreviews	特記事項
Flow Cyt (Intra)		1/20. For unpurified use at 1/10 - 1/100. ab172730 - Rabbit monoclonal IgG, is suitable for use as an isotype control with this antibody.
WB		1/1000. Predicted molecular weight: 17 kDa. For unpurified use at 1/1000 - 1/10000.
IHC-P		1/500. Perform heat mediated antigen retrieval with citrate buffer pH 6 before commencing with IHC staining protocol. See IHC antigen retrieval protocols . For unpurified use at 1/100 - 1/250. The mouse, rat and Chinese hamster recommendation is based on the WB results. We do not guarantee IHC-P for mouse, rat and
ICC/IF		Use at an assay dependent concentration.

ターゲット情報

機能	Major role in the synthesis of nucleoside triphosphates other than ATP. Negatively regulates Rho activity by interacting with AKAP13/LBC. Acts as a transcriptional activator of the MYC gene; binds DNA non-specifically (PubMed:8392752). Exhibits histidine protein kinase activity.
組織特異性	Ubiquitously expressed.
配列類似性	Belongs to the NDK family.
細胞内局在	Cytoplasm. Nucleus. Isoform 2 is mainly cytoplasmic and isoform 1 and isoform 2 are excluded from the nucleolus.



Immunohistochemistry (Formalin/PFA-fixed paraffin-embedded sections) - Anti-NME2 antibody [EPR8351] (ab131329)



Western blot - Anti-NME2 antibody [EPR8351] (ab131329)

Immunohistochemistry (Formalin/PFA-fixed paraffin-embedded sections) analysis of human cerebrum tissue sections labeling NME2 with purified ab131329 at 1/500 dilution (0.22 µg/mL). Heat mediated antigen retrieval using Bond™ Epitope Retrieval Solution 2 (pH 9.0) . Rabbit specific IHC polymer detection kit HRP/DAB (**ab209101**) was used as the secondary antibody. Negative control: PBS instead of the primary antibody. Hematoxylin was used as a counterstain.

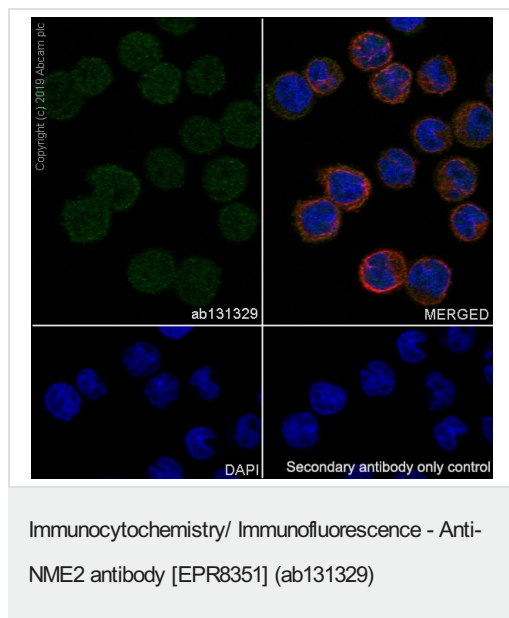
All lanes : Anti-NME2 antibody [EPR8351] (ab131329) at 1/1000 dilution (purified)

Lane 1 : Mouse kidney lysate
Lane 2 : Rat kidney lysate
Lane 3 : CHO-S (Chinese hamster ovary epithelial cell) whole cell lysate

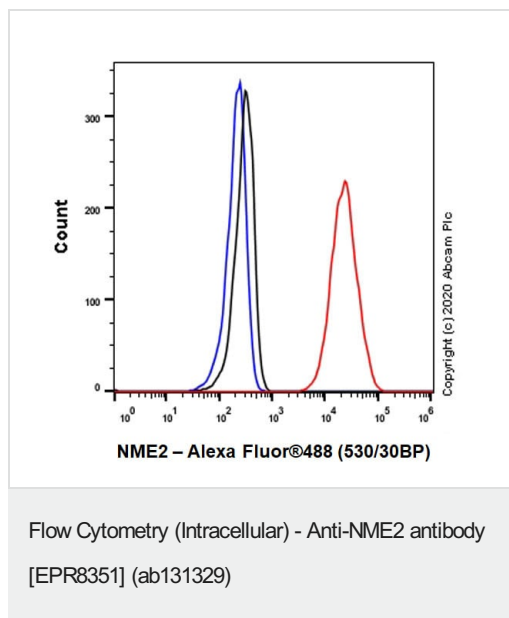
Lysates/proteins at 15 µg per lane.

Secondary
All lanes : Goat Anti-Rabbit IgG H&L (HRP) (**ab97051**) at 1/20000 dilution

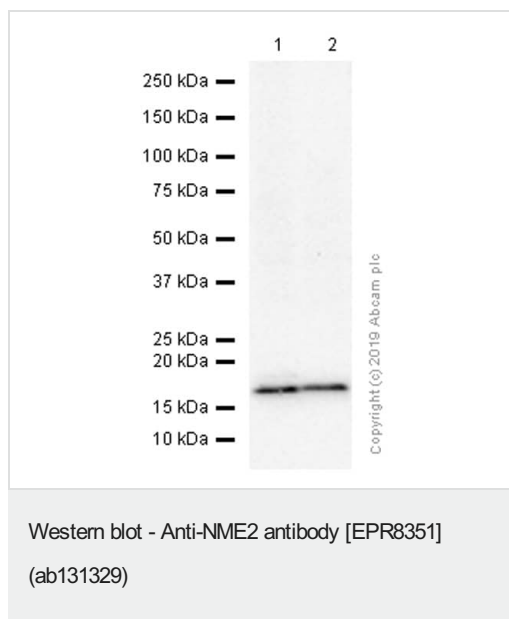
Predicted band size: 17 kDa
Observed band size: 17 kDa



Immunocytochemistry/ Immunofluorescence analysis of CHO-S (Chinese hamster ovary epithelial cell) cells labeling NME2 with purified ab131329 at 1/50 dilution (2.18 µg/ml). Cells were fixed in 4% Paraformaldehyde and permeabilized with 0.1% TritonX-100. Cells were counterstained with Ab195889 Anti-alpha Tubulin antibody [DM1A] - Microtubule Marker (Alexa Fluor® 594) 1/200 (2.5 µg/mL). Goat anti rabbit IgG (Alexa Fluor® 488, **ab150077**) was used as the secondary antibody at 1/1000 (2 µg/mL) dilution. DAPI (blue) was used as nuclear counterstain. PBS instead of the primary antibody was used as the secondary antibody only control.



Intracellular Flow Cytometry analysis of HEK-293 (Human embryonickidney epithelial cell) cells labeling NME2 with purified ab131329 at 1/20 dilution (5µg/mL) (Red). Cells were fixed with 4% Paraformaldehyde and permeabilised with 90% Methanol. A Goat anti rabbit IgG (Alexa Fluor® 488, **ab150077**) secondary antibody was used at 1/2000. Isotype control - Rabbit monoclonal IgG (Black). Unlabeled control - Cell without incubation with primary antibody and secondary antibody (Blue).



All lanes : Anti-NME2 antibody [EPR8351] (ab131329) at 1/1000 dilution (purified)

Lane 1 : 293T (Human embryonic kidney epithelial cell) whole cell lysate

Lane 2 : PC-12 (Rat adrenal gland pheochromocytoma) whole cell lysate

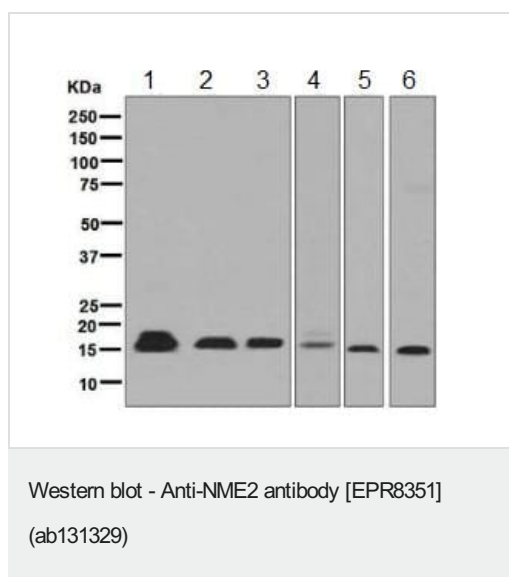
Lysates/proteins at 20 µg per lane.

Secondary

All lanes : Goat Anti-Rabbit IgG H&L (HRP) ([ab97051](#)) at 1/20000 dilution

Predicted band size: 17 kDa

Observed band size: 17 kDa



All lanes : Anti-NME2 antibody [EPR8351] (ab131329) at 1/1000 dilution (unpurified)

Lane 1 : LnCaP cell lysate

Lane 2 : PC-12 cell lysate

Lane 3 : CHO cell lysate

Lane 4 : 293T cell lysate

Lane 5 : Human spleen lysate

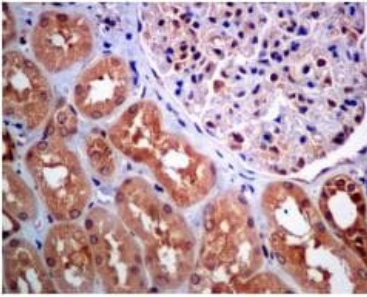
Lane 6 : Human thyroid lysate

Lysates/proteins at 10 µg per lane.

Secondary

All lanes : Goat anti-rabbit HRP at 1/2000 dilution

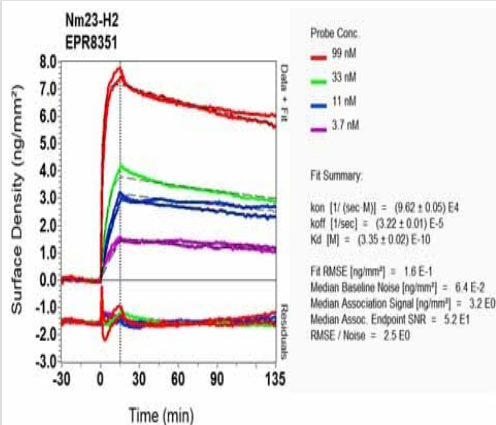
Predicted band size: 17 kDa



Immunohistochemistry (Formalin/PFA-fixed paraffin-embedded sections) - Anti-NME2 antibody [EPR8351] (ab131329)

Immunohistochemical analysis of paraffin-embedded Human kidney tissue labelling NME2 with unpurified ab131329 at 1/100 dilution.

Perform heat mediated antigen retrieval with citrate buffer pH 6 before commencing with IHC staining protocol.



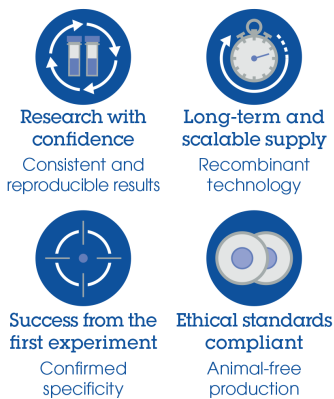
OIR-D Scanning - Anti-NME2 antibody [EPR8351] (ab131329)

Equilibrium disassociation constant (K_D)

Learn more about K_D

[Click here to learn more about \$K_D\$](#)

Why choose a recombinant antibody?



Anti-NME2 antibody [EPR8351] (ab131329)

Please note: All products are "FOR RESEARCH USE ONLY. NOT FOR USE IN DIAGNOSTIC PROCEDURES"

Our Abpromise to you: Quality guaranteed and expert technical support

- Replacement or refund for products not performing as stated on the datasheet
- Valid for 12 months from date of delivery
- Response to your inquiry within 24 hours

- We provide support in Chinese, English, French, German, Japanese and Spanish
- Extensive multi-media technical resources to help you
- We investigate all quality concerns to ensure our products perform to the highest standards

If the product does not perform as described on this datasheet, we will offer a refund or replacement. For full details of the Abpromise, please visit <https://www.abcam.co.jp/abpromise> or contact our technical team.

Terms and conditions

- Guarantee only valid for products bought direct from Abcam or one of our authorized distributors