


# Anti-NMDAR2B (phospho Y1252) antibody ab18532

★★★★☆ [3 Abreviews](#) [3 References](#) [画像数 2](#)

### 製品の概要

---

製品名	Anti-NMDAR2B (phospho Y1252) antibody
製品の詳細	Rabbit polyclonal to NMDAR2B (phospho Y1252)
由来種	Rabbit
アプリケーション	<b>適用あり:</b> WB
種交差性	<b>交差種:</b> Mouse, Human <b>交差が予測される動物種:</b> Rat 
免疫原	Synthetic peptide. This information is proprietary to Abcam and/or its suppliers.
特記事項	<p>The Life Science industry has been in the grips of a reproducibility crisis for a number of years. Abcam is leading the way in addressing this with our range of recombinant monoclonal antibodies and knockout edited cell lines for gold-standard validation. Please check that this product meets your needs before purchasing.</p> <p>If you have any questions, special requirements or concerns, please send us an inquiry and/or contact our Support team ahead of purchase. Recommended alternatives for this product can be found below, along with publications, customer reviews and Q&amp;As</p>

### 製品の特性

---

製品の状態	Liquid
保存方法	Shipped at 4°C. Store at +4°C short term (1-2 weeks). Upon delivery aliquot. Store at -20°C or -80°C. Avoid freeze / thaw cycle.
バッファー	pH: 7.40 Preservative: 0.02% Sodium azide Constituent: PBS
精製度	Immunogen affinity purified
ポリ/モノ	ポリクローナル
アイソタイプ	IgG

## アプリケーション

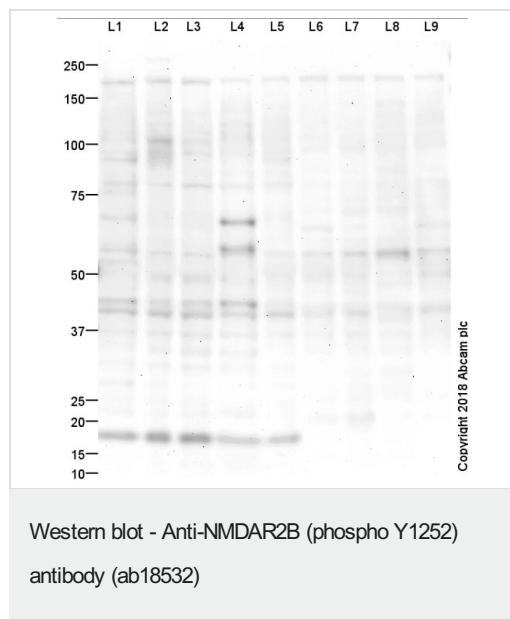
**The Abpromise guarantee** **Abpromise保証は、次のテスト済みアプリケーションにおけるab18532の使用に適用されます**  
アプリケーションノートには、推奨の開始希釈率がありますが、適切な希釈率につきましてはご確認ください。

アプリケーション	Abreviews	特記事項
WB		Use a concentration of 1 µg/ml. Detects a band of approximately 166 kDa (predicted molecular weight: 166 kDa).

## ターゲット情報

<b>機能</b>	NMDA receptor subtype of glutamate-gated ion channels with high calcium permeability and voltage-dependent sensitivity to magnesium. Mediated by glycine.
<b>組織特異性</b>	Primarily found in the fronto-parieto-temporal cortex and hippocampus pyramidal cells, lower expression in the basal ganglia.
<b>配列類似性</b>	Belongs to the glutamate-gated ion channel (TC 1.A.10.1) family. NR2B/GRIN2B subfamily.
<b>細胞内局在</b>	Cell membrane. Cell junction > synapse > postsynaptic cell membrane.

## 画像



**All lanes** : ab18532 at 1 mg/ml

- Lane 1** : Mouse Brain Tissue Lysate
- Lane 2** : Mouse Fore-brain Tissue Lysate
- Lane 3** : Mouse Cortex Tissue Lysate
- Lane 4** : Mouse Cerebellum Tissue Lysate
- Lane 5** : Mouse Hippo-campus Tissue Lysate
- Lane 6** : Human Brain Tissue Lysate
- Lane 7** : Human Cortex Tissue Lysate
- Lane 8** : Human Cerebellum Tissue Lysate
- Lane 9** : Human Hippo-campus Tissue Lysate

Lysates/proteins at 20 µg per lane.

### Secondary

**All lanes** : Goat polyclonal to Rabbit IgG - H&L - Pre-Adsorbed (HRP) at 1/3000 dilution

Developed using the ECL technique.

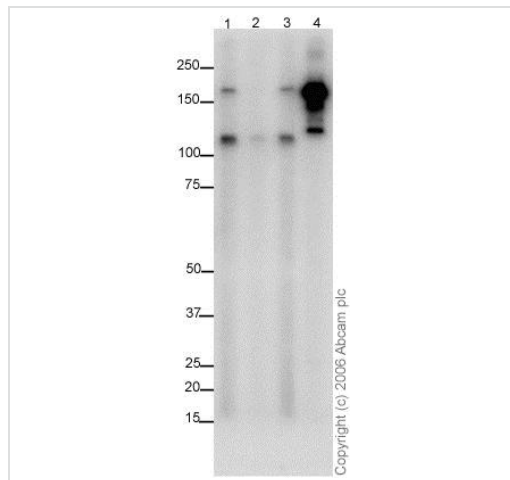
Performed under reducing conditions.

**Predicted band size:** 166 kDa

**Observed band size:** 166 kDa

**Additional bands at:** 18 kDa, 45 kDa, 60 kDa. We are unsure as to the identity of these extra bands.

**Exposure time:** 20 minutes



Western blot - Anti-NMDAR2B (phospho Y1252) antibody (ab18532)

This image is courtesy of Chris Anderson, Wellcome Trust Sanger Institute, United Kingdom

**Lanes 1-3 :** Anti-NMDAR2B (phospho Y1252) antibody (ab18532) at 3 µg/ml

**Lane 4 :** NR2B antibody (positive control)

**Lane 1 :** mouse cortical extract with Mouse NMDAR2B (unmodified) peptide (**ab19637**) at 2 µg/ml

**Lane 2 :** mouse cortical extract with Mouse NMDAR2B (phospho Y1252) peptide (**ab19636**) at 2 µg/ml

**Lanes 3-4 :** mouse cortical extract

Lysates/proteins at 20 µg per lane.

**Predicted band size:** 166 kDa

**Observed band size:** 166 kDa

**Additional bands at:** 115 kDa. We are unsure as to the identity of these extra bands.

**Please note:** All products are "FOR RESEARCH USE ONLY. NOT FOR USE IN DIAGNOSTIC PROCEDURES"

### Our Abpromise to you: Quality guaranteed and expert technical support

- Replacement or refund for products not performing as stated on the datasheet
- Valid for 12 months from date of delivery
- Response to your inquiry within 24 hours
- We provide support in Chinese, English, French, German, Japanese and Spanish
- Extensive multi-media technical resources to help you
- We investigate all quality concerns to ensure our products perform to the highest standards

If the product does not perform as described on this datasheet, we will offer a refund or replacement. For full details of the Abpromise, please visit <https://www.abcam.co.jp/abpromise> or contact our technical team.

### Terms and conditions

- Guarantee only valid for products bought direct from Abcam or one of our authorized distributors