

Anti-NMDAR2B (phospho S1480) antibody ab73014

4 References [画像数 1](#)

製品の概要

製品名	Anti-NMDAR2B (phospho S1480) antibody
製品の詳細	Rabbit polyclonal to NMDAR2B (phospho S1480)
由来種	Rabbit
特異性	ab73014 is specific for ~180k NMDAR2B protein phosphorylated at Ser1480. Immunolabeling of the NMDAR2B band is blocked by the phosphopeptide used as the antigen but not by the corresponding dephosphopeptide. Immunolabeling is also blocked by lambda-phosphatase treatment.
アプリケーション	適用あり: WB
種交差性	交差種: Rat 交差が予測される動物種: Mouse, Chicken, Cow, Dog, Human, Non human primates, Zebrafish
免疫原	Synthetic peptide corresponding to Rat NMDAR2B (phospho S1480).
ポジティブ・コントロール	Rat hippocampal lysate.
特記事項	<p>The Life Science industry has been in the grips of a reproducibility crisis for a number of years. Abcam is leading the way in addressing this with our range of recombinant monoclonal antibodies and knockout edited cell lines for gold-standard validation. Please check that this product meets your needs before purchasing.</p> <p>If you have any questions, special requirements or concerns, please send us an inquiry and/or contact our Support team ahead of purchase. Recommended alternatives for this product can be found below, along with publications, customer reviews and Q&As</p>

製品の特性

製品の状態	Liquid
保存方法	Shipped at 4°C. Upon delivery aliquot and store at -20°C. Avoid freeze / thaw cycles.
バッファー	pH: 7.50 Constituents: 0.01% BSA, 50% Glycerol, 0.87% Sodium chloride, 0.238% HEPES
精製度	Immunogen affinity purified
特記事項 (精製)	ab73014 is prepared from rabbit serum by affinity purification via sequential chromatography on phospho- and dephosphopeptide affinity columns.

ポリモノ
アイソタイプ

ポリクローナル
IgG

アプリケーション

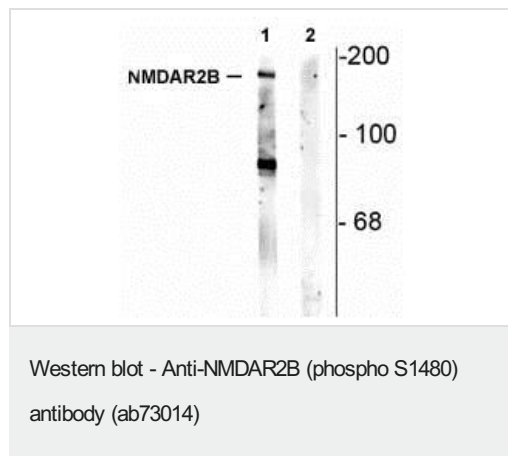
The Abpromise guarantee Abpromise保証は、 次のテスト済みアプリケーションにおけるab73014の使用に適用されます
アプリケーションノートには、推奨の開始希釈率がありますが、適切な希釈率につきましてはご検討ください。

アプリケーション	Abreviews	特記事項
WB		1/1000. Detects a band of approximately 180 kDa (predicted molecular weight: 166 kDa).

ターゲット情報

機能	NMDA receptor subtype of glutamate-gated ion channels with high calcium permeability and voltage-dependent sensitivity to magnesium. Mediated by glycine.
組織特異性	Primarily found in the fronto-parieto-temporal cortex and hippocampus pyramidal cells, lower expression in the basal ganglia.
配列類似性	Belongs to the glutamate-gated ion channel (TC 1.A.10.1) family. NR2B/GRIN2B subfamily.
細胞内局在	Cell membrane. Cell junction > synapse > postsynaptic cell membrane.

画像



All lanes : Anti-NMDAR2B (phospho S1480) antibody (ab73014)
at 1/1000 dilution

Lane 1 : Rat hippocampal lysate

Lane 2 : Rat hippocampal lysate incubated in lambda-phosphatase
(1200 units for 30 min)

Predicted band size: 166 kDa

Observed band size: 180 kDa

Additional bands at: 85 kDa. We are unsure as to the identity of these extra bands.

The phosphospecificity of the labeling is shown in the second lane (lambda-phosphatase). The immunolabeling is completely eliminated by treatment with lambda-phosphatase.

Please note: All products are "FOR RESEARCH USE ONLY. NOT FOR USE IN DIAGNOSTIC PROCEDURES"

Our Abpromise to you: Quality guaranteed and expert technical support

- Replacement or refund for products not performing as stated on the datasheet
- Valid for 12 months from date of delivery
- Response to your inquiry within 24 hours

- We provide support in Chinese, English, French, German, Japanese and Spanish
- Extensive multi-media technical resources to help you
- We investigate all quality concerns to ensure our products perform to the highest standards

If the product does not perform as described on this datasheet, we will offer a refund or replacement. For full details of the Abpromise, please visit <https://www.abcam.co.jp/abpromise> or contact our technical team.

Terms and conditions

- Guarantee only valid for products bought direct from Abcam or one of our authorized distributors