

Anti-NM23A antibody [EPR3036] ab92327

KO 評価済 リコンビナント RabMAb

1 References 画像数 5

製品の概要

製品名	Anti-NM23A antibody [EPR3036]
製品の詳細	Rabbit monoclonal [EPR3036] to NM23A
由来種	Rabbit
アプリケーション	適用あり: WB, IHC-P, Flow Cyt (Intra) 適用なし: IP
種交差性	交差種: Human
免疫原	Synthetic peptide within Human NM23A aa 1-100. The exact sequence is proprietary.
ポジティブ・コントロール	WB: HEK293T, MCF7, A375, HeLa and Jurkat whole cell lysate (ab7899) IHC-P: Human lung adenocarcinoma tissue
特記事項	<p>This product is a recombinant monoclonal antibody, which offers several advantages including:</p> <ul style="list-style-type: none"> - High batch-to-batch consistency and reproducibility - Improved sensitivity and specificity - Long-term security of supply - Animal-free production <p>For more information see here.</p> <p>Our RabMAb[®] technology is a patented hybridoma-based technology for making rabbit monoclonal antibodies. For details on our patents, please refer to RabMAb[®] patents.</p> <p>Mouse, Rat: We have preliminary internal testing data to indicate this antibody may not react with these species. Please contact us for more information.</p>

製品の特性

製品の状態	Liquid
保存方法	Shipped at 4°C. Upon delivery aliquot and store at -20°C. Avoid freeze / thaw cycles.
バッファー	pH: 7.20 Preservative: 0.05% Sodium azide Constituents: 0.1% BSA, 40% Glycerol (glycerin, glycerine), 9.85% Tris glycine, 50% Tissue culture supernatant
精製度	Protein A purified

ポリ/モノ	モノクローナル
クローン名	EPR3036
アイソタイプ	IgG

アプリケーション

The Abpromise guarantee **Abpromise保証は、次のテスト済みアプリケーションにおけるab92327の使用に適用されず**
 アプリケーションノートには、推奨の開始希釈率がありますが、適切な希釈率につきましてはご検討ください。

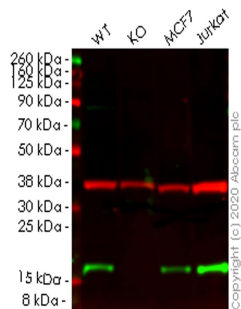
アプリケーション	Abreviews	特記事項
WB		1/1000 - 1/5000. Predicted molecular weight: 17 kDa.
IHC-P		1/100 - 1/250. Perform heat mediated antigen retrieval via the pressure cooker method before commencing with IHC staining protocol. Overnight incubation is recommended.
Flow Cyt (Intra)		Use at an assay dependent concentration.

追加情報 Is unsuitable for IP.

ターゲット情報

機能	Major role in the synthesis of nucleoside triphosphates other than ATP. Possesses nucleoside-diphosphate kinase, serine/threonine-specific protein kinase, geranyl and farnesyl pyrophosphate kinase, histidine protein kinase and 3'-5' exonuclease activities. Involved in cell proliferation, differentiation and development, signal transduction, G protein-coupled receptor endocytosis, and gene expression. Required for neural development including neural patterning and cell fate determination.
組織特異性	Isoform 1 is expressed in heart, brain, placenta, lung, liver, skeletal muscle, pancreas, spleen and thymus. Expressed in lung carcinoma cell lines but not in normal lung tissues. Isoform 2 is ubiquitously expressed and its expression is also related to tumor differentiation. Isoform 3 is ubiquitously expressed.
配列類似性	Belongs to the NDK family.
細胞内局在	Cytoplasm. Nucleus. Cell-cycle dependent nuclear localization which can be induced by interaction with Epstein-barr viral proteins or by degradation of the SET complex by GzmA.

画像



Western blot - Anti-NM23A antibody [EPR3036] (ab92327)

All lanes : Anti-NM23A antibody [EPR3036] (ab92327) at 1/1000 dilution

Lane 1 : Wild-type HEK293T cell lysate

Lane 2 : NME1 knockout HEK293T cell lysate

Lane 3 : MCF7 cell lysate

Lane 4 : Jurkat cell lysate

Lysates/proteins at 20 µg per lane.

Secondary

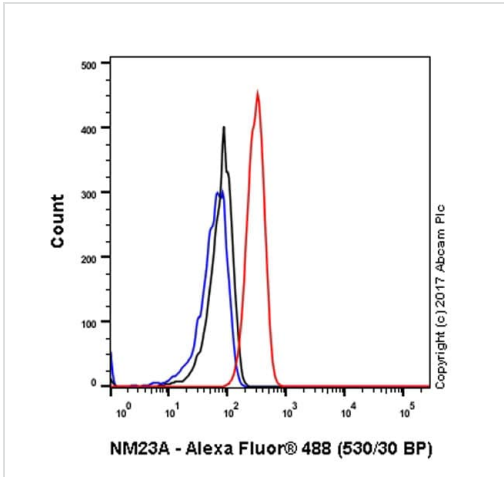
All lanes : Goat anti-Rabbit IgG H&L (IRDye® 800CW) preadsorbed (**ab216773**) at 1/10000 dilution

Predicted band size: 17 kDa

Observed band size: 17 kDa

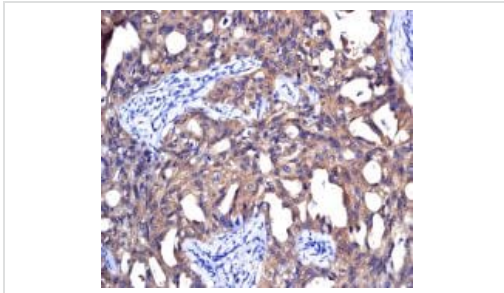
Lanes 1-4: Merged signal (red and green). Green - ab92327 observed at 17 kDa. Red - loading control **ab8245** observed at 36 kDa.

ab92327 Anti-NM23A antibody [EPR3036] was shown to specifically react with NM23A in wild-type HEK293T cells. Loss of signal was observed when knockout cell line **ab266215** (knockout cell lysate **ab258075**) was used. Wild-type and NM23A knockout samples were subjected to SDS-PAGE. ab92327 and Anti-GAPDH antibody [6C5] - Loading Control (**ab8245**) were incubated overnight at 4°C at 1 in 1000 dilution and 1 in 20000 dilution respectively. Blots were developed with Goat anti-Rabbit IgG H&L (IRDye® 800CW) preadsorbed (**ab216773**) and Goat anti-Mouse IgG H&L (IRDye® 680RD) preadsorbed (**ab216776**) secondary antibodies at 1 in 20000 dilution for 1 hour at room temperature before imaging.



Flow Cytometry (Intracellular) - Anti-NM23A antibody [EPR3036] (ab92327)

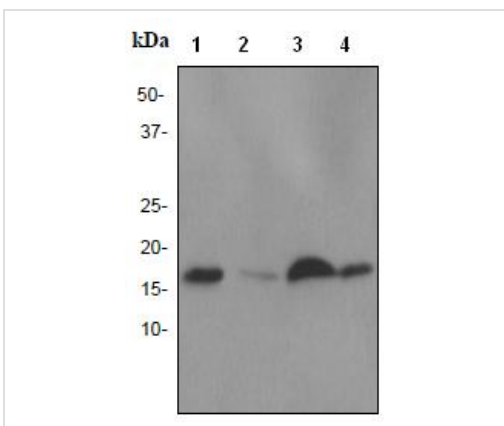
Intracellular Flow Cytometry analysis of HeLa (human cervix adenocarcinoma) cells labeling NM23A with unpurified ab92327 at 1/50 dilution (10ug/ml) (red). Cells were fixed with 4% paraformaldehyde and permeabilised with 90% methanol. A Goat anti-rabbit IgG (Alexa Fluor® 488) (1/2000 dilution) was used as the secondary antibody. Rabbit monoclonal IgG (Black) was used as the isotype control, cells without incubation with primary antibody and secondary antibody (Blue) were used as the unlabeled control.



Immunohistochemistry (Formalin/PFA-fixed paraffin-embedded sections) - Anti-NM23A antibody [EPR3036] (ab92327)

ab92327, at a dilution of 1/100, staining NM23A in formalin fixed, paraffin embedded Human lung adenocarcinoma tissue by Immunohistochemistry. Detection: DAB staining

Heat mediated antigen retrieval was performed via the pressure cooker method before commencing with IHC staining protocol.



Western blot - Anti-NM23A antibody [EPR3036] (ab92327)

All lanes : Anti-NM23A antibody [EPR3036] (ab92327) at 1/5000 dilution

Lane 1 : MCF-7 cell lysate

Lane 2 : A375 cell lysate

Lane 3 : HeLa cell lysate

Lane 4 : Jurkat cell lysate

Lysates/proteins at 10 µg per lane.

Secondary

All lanes : HRP labelled goat anti-rabbit at 1/2000 dilution

Predicted band size: 17 kDa

Why choose a recombinant antibody?



Research with confidence
Consistent and reproducible results



Long-term and scalable supply
Recombinant technology



Success from the first experiment
Confirmed specificity



Ethical standards compliant
Animal-free production

Anti-NM23A antibody [EPR3036] (ab92327)

Please note: All products are "FOR RESEARCH USE ONLY. NOT FOR USE IN DIAGNOSTIC PROCEDURES"

Our Abpromise to you: Quality guaranteed and expert technical support

- Replacement or refund for products not performing as stated on the datasheet
- Valid for 12 months from date of delivery
- Response to your inquiry within 24 hours
- We provide support in Chinese, English, French, German, Japanese and Spanish
- Extensive multi-media technical resources to help you
- We investigate all quality concerns to ensure our products perform to the highest standards

If the product does not perform as described on this datasheet, we will offer a refund or replacement. For full details of the Abpromise, please visit <https://www.abcam.co.jp/abpromise> or contact our technical team.

Terms and conditions

- Guarantee only valid for products bought direct from Abcam or one of our authorized distributors