

# Anti-NLRP11 antibody ab105408

**1 References** [画像数 3](#)

### 製品の概要

製品名	Anti-NLRP11 antibody
製品の詳細	Rabbit polyclonal to NLRP11
由来種	Rabbit
特異性	At least three isoforms of NLRP11 are known to exist; this antibody will recognize all of them. NLRP11 antibody is predicted to not cross-react with other NLRP family members
アプリケーション	<b>適用あり:</b> ICC/IF, WB
種交差性	<b>交差種:</b> Human
免疫原	A 15 amino acid peptide from near the C terminus of Human NLRP11 (NP_659444).
ポジティブ・コントロール	HeLa cell lysate
特記事項	<p>The Life Science industry has been in the grips of a reproducibility crisis for a number of years. Abcam is leading the way in addressing this with our range of recombinant monoclonal antibodies and knockout edited cell lines for gold-standard validation. Please check that this product meets your needs before purchasing.</p> <p>If you have any questions, special requirements or concerns, please send us an inquiry and/or contact our Support team ahead of purchase. Recommended alternatives for this product can be found below, along with publications, customer reviews and Q&amp;As</p>

### 製品の特性

製品の状態	Liquid
保存方法	Shipped at 4°C. Store at +4°C.
バッファー	<p>pH: 7.2</p> <p>Preservative: 0.02% Sodium azide</p> <p>Constituent: PBS</p>
精製度	Immunogen affinity purified
ポリ/モノ	ポリクローナル
アイソタイプ	IgG

### アプリケーション

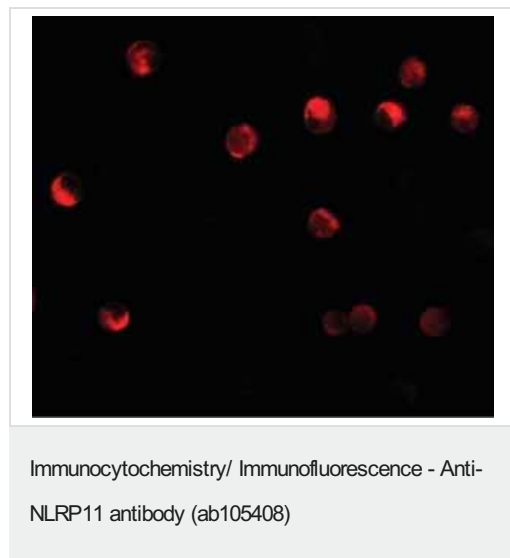
**The Abpromise guarantee**      Abpromise保証は、 次のテスト済みアプリケーションにおけるab105408の使用に適用されます  
アプリケーションノートには、推奨の開始希釈率がありますが、適切な希釈率につきましてはご検討ください。

アプリケーション	Abreviews	特記事項
ICC/IF		Use a concentration of 20 µg/ml.
WB		Use a concentration of 1 - 2 µg/ml. Predicted molecular weight: 118 kDa.

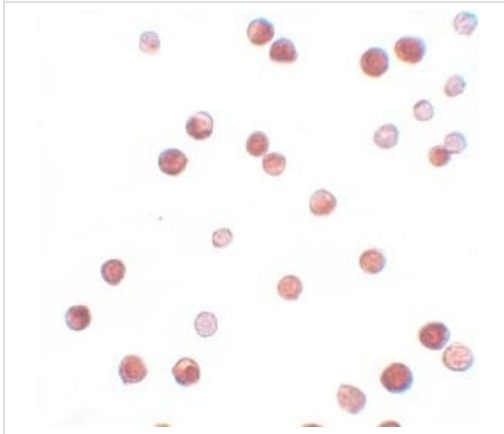
## ターゲット情報

機能	Involved in inflammation.
配列類似性	Belongs to the NLRP family. Contains 1 DAPIN domain. Contains 6 LRR (leucine-rich) repeats. Contains 1 NACHT domain.

## 画像

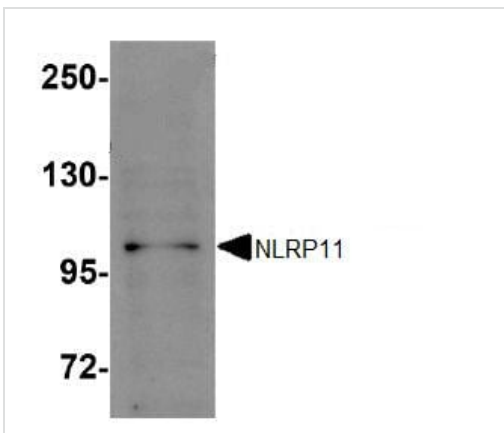


Immunofluorescence of NLRP11 in HeLa cells with ab105407 at 20 ug/mL.



Immunocytochemistry of HeLa cells with ab105408 at 2.5 µg/mL.

Immunocytochemistry/ Immunofluorescence - Anti-NLRP11 antibody (ab105408)



Anti-NLRP11 antibody (ab105408) at 1 µg/ml + HeLa cell lysate at 15 µg

**Predicted band size:** 118 kDa

Western blot - Anti-NLRP11 antibody (ab105408)

**Please note:** All products are "FOR RESEARCH USE ONLY. NOT FOR USE IN DIAGNOSTIC PROCEDURES"

### Our Abpromise to you: Quality guaranteed and expert technical support

- Replacement or refund for products not performing as stated on the datasheet
- Valid for 12 months from date of delivery
- Response to your inquiry within 24 hours
- We provide support in Chinese, English, French, German, Japanese and Spanish
- Extensive multi-media technical resources to help you
- We investigate all quality concerns to ensure our products perform to the highest standards

If the product does not perform as described on this datasheet, we will offer a refund or replacement. For full details of the Abpromise, please visit <https://www.abcam.co.jp/abpromise> or contact our technical team.

### Terms and conditions

- Guarantee only valid for products bought direct from Abcam or one of our authorized distributors