

Anti-NLN antibody [OT11D6] ab119802

1 References [画像数 8](#)

製品の概要

製品名	Anti-NLN antibody [OT11D6]
製品の詳細	Mouse monoclonal [OT11D6] to NLN
由来種	Mouse
アプリケーション	適用あり: WB, IHC-P, ICC/IF, Flow Cyt (Intra)
種交差性	交差種: Mouse, Rat, Human, African green monkey
免疫原	Recombinant full length protein corresponding to Human NLN aa 1-750. Produced in HEK293T cells (NP_065777). Database link: Q9BYT8

 [Run BLAST with](#)

 [Run BLAST with](#)

ポジティブ・コントロール

WB: HEK-293T cells transfected with NLN, HepG2, HeLa, SVT2, A549, COS7, PC12, and MCF7 cell extracts. IHC-P: Carcinoma of Human pancreas, Adenocarcinoma of Human endometrium, Carcinoma of Human bladder and Human tonsil tissues. ICC/IF: COS7 cells transiently transfected with NLN. Flow Cyt (Intra): Jurkat cells.

特記事項

The clone number has been updated from 1D6 to OT11D6, both clone numbers name the same clone.

The Life Science industry has been in the grips of a reproducibility crisis for a number of years. Abcam is leading the way in addressing this with our range of recombinant monoclonal antibodies and knockout edited cell lines for gold-standard validation. Please check that this product meets your needs before purchasing.

If you have any questions, special requirements or concerns, please send us an inquiry and/or contact our Support team ahead of purchase. Recommended alternatives for this product can be found below, along with publications, customer reviews and Q&As

製品の特性

製品の状態	Liquid
保存方法	Shipped at 4°C. Store at +4°C short term (1-2 weeks). Upon delivery aliquot. Store at -20°C. Avoid freeze / thaw cycle.
バッファー	pH: 7.30 Preservative: 0.02% Sodium azide Constituents: PBS, 50% Glycerol, 1% BSA

精製度	Affinity purified
特記事項(精製)	Purified from cell culture supernatant by affinity chromatography.
ポリ/モノ	モノクローナル
クローン名	OT11D6
アイソタイプ	IgG1

アプリケーション

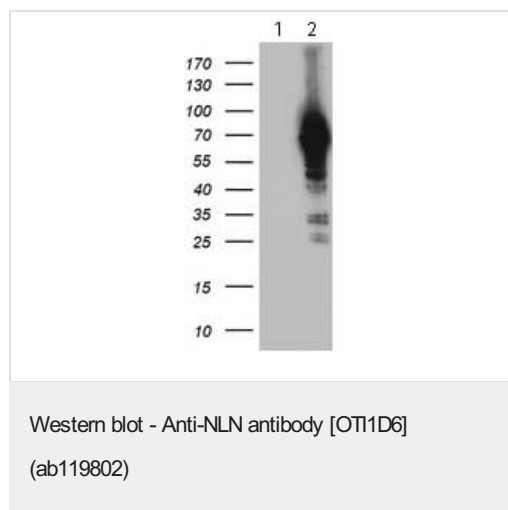
The Abpromise guarantee Abpromise保証は、次のテスト済みアプリケーションにおけるab119802の使用に適用されず
アプリケーションノートには、推奨の開始希釈率がありますが、適切な希釈率につきましてはご検討ください。

アプリケーション	Abreviews	特記事項
WB		1/500 - 1/2000. Predicted molecular weight: 81 kDa.
IHC-P		1/150.
ICC/IF		1/100.
Flow Cyt (Intra)		1/100.

ターゲット情報

機能	Hydrolyzes oligopeptides such as neurotensin, bradykinin and dynorphin A.
配列類似性	Belongs to the peptidase M3 family.
細胞内局在	Mitochondrion intermembrane space. Cytoplasm.

画像



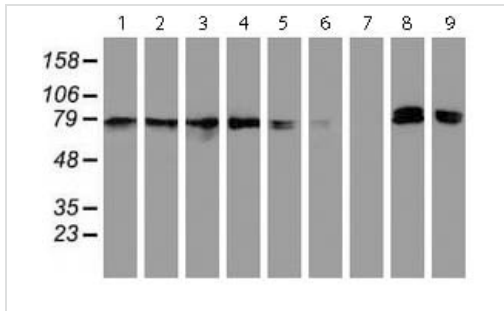
All lanes : Anti-NLN antibody [OT11D6] (ab119802) at 1/500 dilution

Lane 1 : HEK-293T (human epithelial cell line from embryonic kidney transformed with large T antigen) cell lysate transfected with pCMV6-ENTRY control cDNA

Lane 2 : HEK293T cell lysate transfected with pCMV6-ENTRY NLN cDNA

Lysates/proteins at 5 µg per lane.

Predicted band size: 81 kDa



Western blot - Anti-NLN antibody [OT11D6]
(ab119802)

All lanes : Anti-NLN antibody [OT11D6] (ab119802) at 1/500 dilution

Lane 1 : HepG2 (human liver hepatocellular carcinoma cell line) cell lysate

Lane 2 : HeLa (human epithelial cell line from cervix adenocarcinoma) cell lysate

Lane 3 : SVT2 cell extract

Lane 4 : A549 (human lung carcinoma cell line) cell extract

Lane 5 : COS-7 (African green monkey kidney fibroblast-like cell line) cell lysate

Lane 6 : Jurkat (human T cell leukemia cell line from peripheral blood) cell lysate

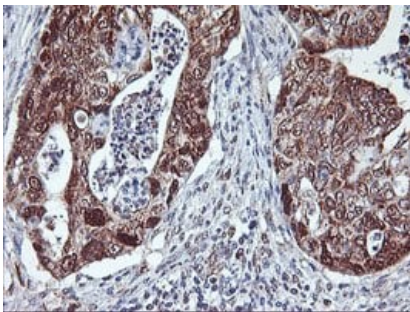
Lane 7 : MDCK cell extract

Lane 8 : PC-12 (rat adrenal gland pheochromocytoma cell line) cell lysate

Lane 9 : MCF7 (human breast adenocarcinoma cell line) cell lysate

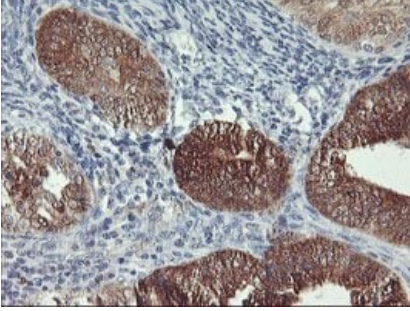
Lysates/proteins at 35 µg per lane.

Predicted band size: 81 kDa



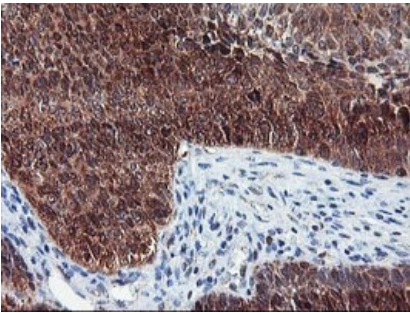
Immunohistochemistry (Formalin/PFA-fixed paraffin-embedded sections) - Anti-NLN antibody [OT11D6]
(ab119802)

Paraffin-embedded human pancreas carcinoma tissue stained for NLN using ab119802 at 1/150 dilution in immunohistochemical analysis.



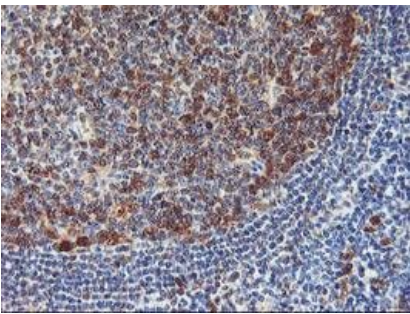
Immunohistochemistry (Formalin/PFA-fixed paraffin-embedded sections) - Anti-NLN antibody [OT11D6] (ab119802)

Paraffin-embedded human endometrium adenocarcinoma tissue stained for NLN using ab119802 at 1/150 dilution in immunohistochemical analysis.



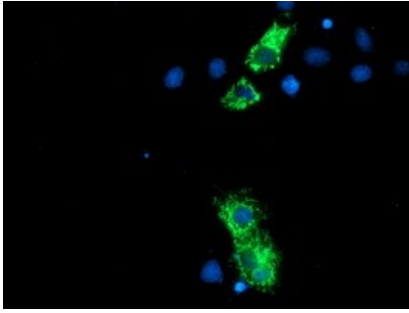
Immunohistochemistry (Formalin/PFA-fixed paraffin-embedded sections) - Anti-NLN antibody [OT11D6] (ab119802)

Paraffin-embedded human bladder carcinoma tissue stained for NLN using ab119802 at 1/150 dilution in immunohistochemical analysis.



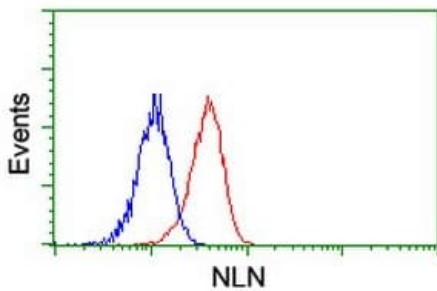
Immunohistochemistry (Formalin/PFA-fixed paraffin-embedded sections) - Anti-NLN antibody [OT11D6] (ab119802)

Paraffin-embedded human tonsil tissue stained for NLN using ab119802 at 1/150 dilution in immunohistochemical analysis.



Immunocytochemistry/ Immunofluorescence - Anti-NLN antibody [OT11D6] (ab119802)

COS-7 (African green monkey kidney fibroblast-like cell line) cells transiently transfected with pCMV6-ENTRY NLN, stained for NLN (green) using ab119802 at 1/100 dilution in ICC/IF.



Flow Cytometry (Intracellular) - Anti-NLN antibody [OT11D6] (ab119802)

Flow cytometric analysis of Jurkat (human T cell leukemia cell line from peripheral blood) cells using ab119802 at 1/100 dilution stained for NLN (Red) compared to a nonspecific negative control antibody (Blue).

Please note: All products are "FOR RESEARCH USE ONLY. NOT FOR USE IN DIAGNOSTIC PROCEDURES"

Our Abpromise to you: Quality guaranteed and expert technical support

- Replacement or refund for products not performing as stated on the datasheet
- Valid for 12 months from date of delivery
- Response to your inquiry within 24 hours
- We provide support in Chinese, English, French, German, Japanese and Spanish
- Extensive multi-media technical resources to help you
- We investigate all quality concerns to ensure our products perform to the highest standards

If the product does not perform as described on this datasheet, we will offer a refund or replacement. For full details of the Abpromise, please visit <https://www.abcam.co.jp/abpromise> or contact our technical team.

Terms and conditions

- Guarantee only valid for products bought direct from Abcam or one of our authorized distributors