

Anti-NIPBL antibody [KT55] ab106768

★★★★★ [3 Abreviews](#) [3 References](#) [画像数 1](#)

製品の概要

製品名	Anti-NIPBL antibody [KT55]
製品の詳細	Rat monoclonal [KT55] to NIPBL
由来種	Rat
特異性	Recognises Human and Mouse NIPBL isoform B (short form).
アプリケーション	適用あり: Flow Cyt
種交差性	交差種: Human
免疫原	Synthetic peptide corresponding to Human NIPBL (C terminal).
特記事項	<p>The Life Science industry has been in the grips of a reproducibility crisis for a number of years. Abcam is leading the way in addressing this with our range of recombinant monoclonal antibodies and knockout edited cell lines for gold-standard validation. Please check that this product meets your needs before purchasing.</p> <p>If you have any questions, special requirements or concerns, please send us an inquiry and/or contact our Support team ahead of purchase. Recommended alternatives for this product can be found below, along with publications, customer reviews and Q&As</p>

製品の特性

製品の状態	Liquid
保存方法	Shipped at 4°C. Store at +4°C short term (1-2 weeks). Upon delivery aliquot. Store at -20°C or -80°C. Avoid freeze / thaw cycle.
バッファー	Preservative: 0.1% Sodium azide Constituent: PBS
精製度	Protein G purified
特記事項(精製)	Purified from culture supernatant using a protein G column.
ポリ/モノ	モノクローナル
クローン名	KT55
アイソタイプ	IgG2a

アプリケーション

The Abpromise guarantee

Abpromise保証は、次のテスト済みアプリケーションにおけるab106768の使用に適用されます

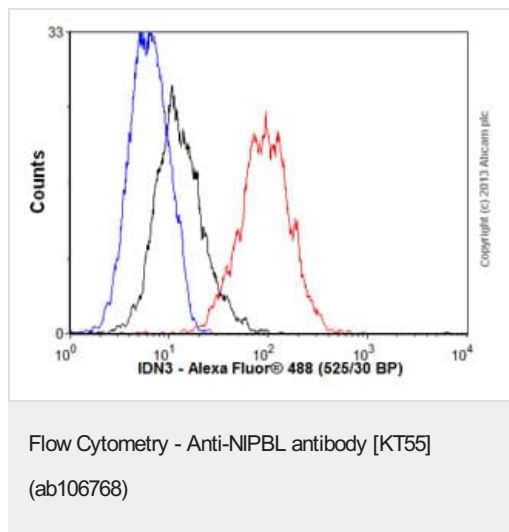
アプリケーションノートには、推奨の開始希釈率がありますが、適切な希釈率につきましてはご検討ください。

アプリケーション	Abreviews	特記事項
Flow Cyt		Use 1µg for 10 ⁶ cells. ab18450 - Rat monoclonal IgG2a, is suitable for use as an isotype control with this antibody.

ターゲット情報

機能	Probably plays a structural role in chromatin. Involved in sister chromatid cohesion, possibly by interacting with the cohesin complex.
組織特異性	Widely expressed. Highly expressed in heart, skeletal muscle, fetal and adult liver, fetal and adult kidney. Expressed at intermediates level in thymus, placenta, peripheral leukocyte and small intestine. Weakly or not expressed in brain, colon, spleen and lung.
関連疾患	Cornelia de Lange syndrome 1
配列類似性	Belongs to the SCC2/Nipped-B family. Contains 5 HEAT repeats.
発生段階	In embryos, it is expressed in developing limbs and later in cartilage primordia of the ulna and of various hand bones. Sites of craniofacial expression include the cartilage primordium of the basioccipital and basisphenoid skull bones and elsewhere in the head and face, including a region encompassing the mesenchyme adjacent to the cochlear canal. Also expressed in the spinal column, notochord and surface ectoderm sclerotome and what seem to be migrating myoblasts. Expressed in the developing heart in the atrial and ventricular myocardium and in the ventricular tubeculae but absent in the endocardial cushions. Also expressed in the developing esophagus, trachea and midgut loops, in the bronchi of the lung and in the tubules of the metanephros. Expression in organs and tissues not typically affected in CDL (e.g. the developing trachea, bronchi, esophagus, heart and kidney) may reflect a bias towards underreporting of more subtle aspects of the phenotype or problems that typically present later in life. Expressed in the mesenchyme surrounding the cochlear canal possibly reflecting the hearing impairment commonly found. Weakly or not expressed in embryonic brain.
ドメイン	Contains one Pro-Xaa-Val-Xaa-Leu (PxVxL) motif, which is required for interaction with chromoshadow domains. This motif requires additional residues -7, -6, +4 and +5 of the central Val which contact the chromoshadow domain.
細胞内局在	Nucleus.
製品の状態	There are 3 isoforms produced by alternative splicing. Isoform 1 also known as: A; IDN3-A. Isoform 2 also known as: B; IDN3-B.

画像



Overlay histogram showing HepG2 cells stained with ab106768 (red line). The cells were fixed with 80% methanol (5 min) and then permeabilized with 0.1% PBS-Tween for 20 min. The cells were then incubated in 1x PBS / 10% normal goat serum / 0.3M glycine to block non-specific protein-protein interactions followed by the antibody (ab106768, 1µg/1x10⁶ cells) for 30 min at 22°C. The secondary antibody used was Alexa Fluor® 488 goat anti-rat IgG (H+L) ([ab150165](#)) at 1/2000 dilution for 30 min at 22°C. Isotype control antibody (black line) was rat IgG2a [aRTK2758] ([ab18450](#), 1µg/1x10⁶ cells) used under the same conditions. Unlabelled sample (blue line) was also used as a control. Acquisition of >5,000 events were collected using a 20mW Argon ion laser (488nm) and 525/30 bandpass filter.

Please note: All products are "FOR RESEARCH USE ONLY. NOT FOR USE IN DIAGNOSTIC PROCEDURES"

Our Abpromise to you: Quality guaranteed and expert technical support

- Replacement or refund for products not performing as stated on the datasheet
- Valid for 12 months from date of delivery
- Response to your inquiry within 24 hours
- We provide support in Chinese, English, French, German, Japanese and Spanish
- Extensive multi-media technical resources to help you
- We investigate all quality concerns to ensure our products perform to the highest standards

If the product does not perform as described on this datasheet, we will offer a refund or replacement. For full details of the Abpromise, please visit <https://www.abcam.co.jp/abpromise> or contact our technical team.

Terms and conditions

- Guarantee only valid for products bought direct from Abcam or one of our authorized distributors