

Anti-NG2 antibody [132.38] ab50009

★★★★★ **10 Abreviews** **48 References** 画像数 1

製品の概要

製品名	Anti-NG2 antibody [132.38]
製品の詳細	Mouse monoclonal [132.38] to NG2
由来種	Mouse
アプリケーション	適用あり: WB
種交差性	交差種: Rat 非交差種: Mouse
免疫原	Tissue, cells or virus. This information is proprietary to Abcam and/or its suppliers.
ポジティブ・コントロール	WB: Rat brain, spinal cord and hippocampus tissue lysate.
特記事項	<p>This antibody clone is manufactured by Abcam. If you require a custom buffer formulation or conjugation for your experiments, please contact orders@abcam.com.</p> <p>The Life Science industry has been in the grips of a reproducibility crisis for a number of years. Abcam is leading the way in addressing this with our range of recombinant monoclonal antibodies and knockout edited cell lines for gold-standard validation. Please check that this product meets your needs before purchasing.</p> <p>If you have any questions, special requirements or concerns, please send us an inquiry and/or contact our Support team ahead of purchase. Recommended alternatives for this product can be found below, along with publications, customer reviews and Q&As</p>

製品の特性

製品の状態	Liquid
保存方法	Shipped at 4°C. Upon delivery aliquot and store at -20°C. Avoid freeze / thaw cycles.
バッファー	pH: 7.40 Preservative: 0.02% Sodium azide Constituents: PBS, 6.97% L-Arginine
精製度	Protein G purified
一次抗体 備考	This antibody is derived from the hybridoma 132.38 produced by the fusion of mouse myeloma cells (P3XAg8.653) and splenocytes from BALB/c mice.
ポリ/モノ	モノクローナル
クローン名	132.38

アプリケーション

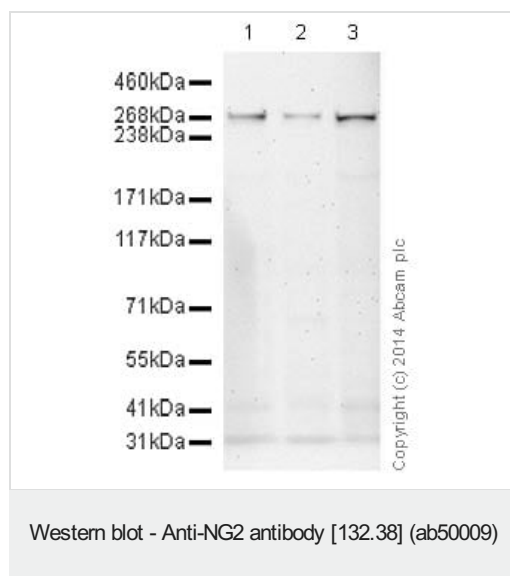
The Abpromise guarantee Abpromise保証は、次のテスト済みアプリケーションにおけるab50009の使用に適用されます
アプリケーションノートには、推奨の開始希釈率がありますが、適切な希釈率につきましてはご検討ください。

アプリケーション	Abreviews	特記事項
WB		Use a concentration of 5 µg/ml. Detects a band of approximately 251 kDa (predicted molecular weight: 251 kDa). Abcam recommends using BSA as the blocking agent.

ターゲット情報

機能	Proteoglycan playing a role in cell proliferation and migration which stimulates endothelial cells motility during microvascular morphogenesis. May also inhibit neurite outgrowth and growth cone collapse during axon regeneration. Cell surface receptor for collagen alpha 2(VI) which may confer cells ability to migrate on that substrate. Binds through its extracellular N-terminus growth factors, extracellular matrix proteases modulating their activity. May regulate MMP16-dependent degradation and invasion of type I collagen participating in melanoma cells invasion properties. May modulate the plasminogen system by enhancing plasminogen activation and inhibiting angiostatin. Functions also as a signal transducing protein by binding through its cytoplasmic C-terminus scaffolding and signaling proteins. May promote retraction fiber formation and cell polarization through Rho GTPase activation. May stimulate alpha-4, beta-1 integrin-mediated adhesion and spreading by recruiting and activating a signaling cascade through CDC42, ACK1 and BCAR1. May activate FAK and ERK1/ERK2 signaling cascades.
組織特異性	Detected only in malignant melanoma cells.
配列類似性	Contains 15 CSPG (NG2) repeats. Contains 2 laminin G-like domains.
翻訳後修飾	O-glycosylated; contains glycosaminoglycan chondroitin sulfate which are required for proper localization and function in stress fiber formation (By similarity). Involved in interaction with MMP16 and ITGA4. Phosphorylation by PRKCA regulates its subcellular location and function in cell motility.
細胞内局在	Apical cell membrane. Cell projection > lamellipodium membrane. Localized at the apical plasma membrane it relocates to the lamellipodia of astrocytoma upon phosphorylation by PRKCA. Localizes to the retraction fibers. Localizes to the plasma membrane of oligodendrocytes.

画像



All lanes : Anti-NG2 antibody [132.38] (ab50009) at 1 µg/ml

Lane 1 : Rat brain tissue lysate

Lane 2 : Rat spinal cord tissue lysate

Lane 3 : Rat hippocampus tissue lysate

Lysates/proteins at 20 µg per lane.

Secondary

All lanes : Goat Anti-Mouse IgG H&L (HRP) preadsorbed (**ab97040**) at 1/10000 dilution

Developed using the ECL technique.

Performed under reducing conditions.

Predicted band size: 251 kDa

Observed band size: 270 kDa

Additional bands at: 31 kDa (possible non-specific binding), 41 kDa (possible non-specific binding)

Exposure time: 20 minutes

Please note: All products are "FOR RESEARCH USE ONLY. NOT FOR USE IN DIAGNOSTIC PROCEDURES"

Our Abpromise to you: Quality guaranteed and expert technical support

- Replacement or refund for products not performing as stated on the datasheet
- Valid for 12 months from date of delivery
- Response to your inquiry within 24 hours
- We provide support in Chinese, English, French, German, Japanese and Spanish
- Extensive multi-media technical resources to help you
- We investigate all quality concerns to ensure our products perform to the highest standards

If the product does not perform as described on this datasheet, we will offer a refund or replacement. For full details of the Abpromise, please visit <https://www.abcam.co.jp/abpromise> or contact our technical team.

Terms and conditions

- Guarantee only valid for products bought direct from Abcam or one of our authorized distributors