

Anti-NFkB Inducing Kinase NIK antibody ab19144

4 References [画像数 3](#)

製品の概要

製品名	Anti-NFkB Inducing Kinase NIK antibody
製品の詳細	Rabbit polyclonal to NFkB Inducing Kinase NIK
由来種	Rabbit
特異性	This antibody recognises human NFkB Inducing Kinase NIK.
アプリケーション	適用あり: IHC-P, ICC/IF, WB
種交差性	交差種: Human
免疫原	Synthetic peptide: SFAWSWRVKHGLENR , corresponding to amino acids 931-947 of Human NFkB Inducing Kinase NIK Run BLAST with Run BLAST with
ポジティブ・コントロール	Whole cell lysate of 293.
特記事項	<p>The Life Science industry has been in the grips of a reproducibility crisis for a number of years. Abcam is leading the way in addressing this with our range of recombinant monoclonal antibodies and knockout edited cell lines for gold-standard validation. Please check that this product meets your needs before purchasing.</p> <p>If you have any questions, special requirements or concerns, please send us an inquiry and/or contact our Support team ahead of purchase. Recommended alternatives for this product can be found below, along with publications, customer reviews and Q&As</p>

製品の特性

製品の状態	Liquid
保存方法	Shipped at 4°C. Upon delivery aliquot and store at -20°C or -80°C. Avoid repeated freeze / thaw cycles.
バッファー	pH: 7.40 Preservative: 0.02% Sodium azide Constituent: PBS
精製度	Immunogen affinity purified
ポリ/モノ	ポリクローナル
アイソタイプ	IgG

アプリケーション

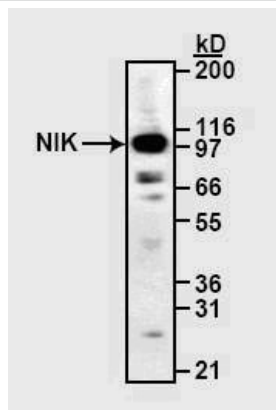
The Abpromise guarantee **Abpromise保証は、** 次のテスト済みアプリケーションにおけるab19144の使用に適用されます
アプリケーションノートには、推奨の開始希釈率がありますが、適切な希釈率につきましてはご検討ください。

アプリケーション	Abreviews	特記事項
IHC-P		Use a concentration of 5 µg/ml. Perform heat mediated antigen retrieval with citrate buffer pH 6 before commencing with IHC staining protocol.
ICC/IF		Use a concentration of 1 - 5 µg/ml.
WB		1/500. Detects a band of approximately 105 kDa (predicted molecular weight: 105.4 kDa).

ターゲット情報

機能	Lymphotoxin beta-activated kinase which seems to be exclusively involved in the activation of NF-kappa-B and its transcriptional activity. Promotes proteolytic processing of NFKB2/P100, which leads to activation of NF-kappa-B via the non-canonical pathway. Could act in a receptor-selective manner.
組織特異性	Weakly expressed in testis, small intestine, spleen, thymus, peripheral blood leukocytes, prostate, ovary and colon.
配列類似性	Belongs to the protein kinase superfamily. STE Ser/Thr protein kinase family. MAP kinase kinase kinase subfamily. Contains 1 protein kinase domain.
翻訳後修飾	Autophosphorylated. Phosphorylation at Thr-559 is required to activates its kinase activity and 'Lys-63'-linked polyubiquitination. Phosphorylated by CHUK/IKKA leading to MAP3K14 destabilization. Ubiquitinated. Undergoes both 'Lys-48'- and 'Lys-63'-linked polyubiquitination. 'Lys-48'-linked polyubiquitination leads to its degradation by the proteasome, while 'Lys-63'-linked polyubiquitination stabilizes and activates it.
細胞内局在	Cytoplasm.

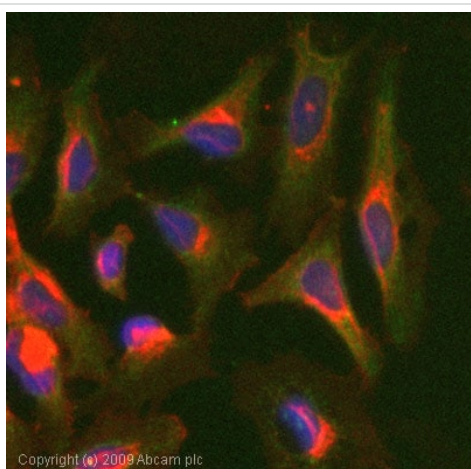
画像



Western blot - Anti-NFκB Inducing Kinase NIK antibody (ab19144)

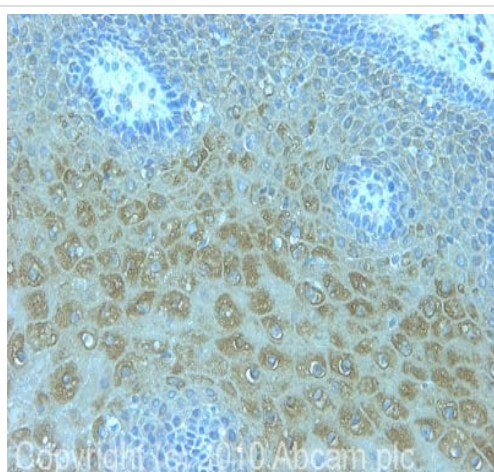
Anti-NFκB Inducing Kinase NIK antibody (ab19144) at 1/500 dilution + NIK-transfected 293 cell lysate

Predicted band size: 105.4 kDa



Immunocytochemistry/ Immunofluorescence - Anti-NFκB Inducing Kinase NIK antibody (ab19144)

ICC/IF image of ab19144 stained HeLa cells. The cells were 100% methanol fixed (5 min) and then incubated in 1%BSA / 10% normal goat serum / 0.3M glycine in 0.1% PBS-Tween for 1h to permeabilise the cells and block non-specific protein-protein interactions. The cells were then incubated with the antibody (ab19144, 1μg/ml) overnight at +4°C. The secondary antibody (green) was Alexa Fluor® 488 goat anti-rabbit IgG (H+L) used at a 1/1000 dilution for 1h. Alexa Fluor® 594 WGA was used to label plasma membranes (red) at a 1/200 dilution for 1h. DAPI was used to stain the cell nuclei (blue) at a concentration of 1.43μM.



Immunohistochemistry (Formalin/PFA-fixed paraffin-embedded sections) - Anti-NFκB Inducing Kinase NIK antibody (ab19144)

IHC image of ab19144 staining in human cervix formalin fixed paraffin embedded tissue section, performed on a Leica Bond™ system using the standard protocol F. The section was pre-treated using heat mediated antigen retrieval with sodium citrate buffer (pH6, epitope retrieval solution 1) for 20 mins. The section was then incubated with ab19144, 5μg/ml, for 15 mins at room temperature and detected using an HRP conjugated compact polymer system. DAB was used as the chromogen. The section was then counterstained with haematoxylin and mounted with DPX.

For other IHC staining systems (automated and non-automated) customers should optimize variable parameters such as antigen retrieval conditions, primary antibody concentration and antibody incubation times.

Please note: All products are "FOR RESEARCH USE ONLY. NOT FOR USE IN DIAGNOSTIC PROCEDURES"

Our Abpromise to you: Quality guaranteed and expert technical support

- Replacement or refund for products not performing as stated on the datasheet
- Valid for 12 months from date of delivery
- Response to your inquiry within 24 hours

- We provide support in Chinese, English, French, German, Japanese and Spanish
- Extensive multi-media technical resources to help you
- We investigate all quality concerns to ensure our products perform to the highest standards

If the product does not perform as described on this datasheet, we will offer a refund or replacement. For full details of the Abpromise, please visit <https://www.abcam.co.jp/abpromise> or contact our technical team.

Terms and conditions

- Guarantee only valid for products bought direct from Abcam or one of our authorized distributors