

# Anti-Neurotensin Receptor 1/NTSR1 antibody [B-N6] ab27380

画像数 1

### 製品の概要

製品名	Anti-Neurotensin Receptor 1/NTSR1 antibody [B-N6]
製品の詳細	Mouse monoclonal [B-N6] to Neurotensin Receptor 1/NTSR1
由来種	Mouse
特異性	Recognises the membrane protein.
アプリケーション	<b>適用あり:</b> Flow Cyt
種交差性	<b>交差種:</b> Human
免疫原	Tissue, cells or virus corresponding to Neurotensin Receptor 1/NTSR1. NTR transfected CHO cell line
特記事項	<p>The Life Science industry has been in the grips of a reproducibility crisis for a number of years. Abcam is leading the way in addressing this with our range of recombinant monoclonal antibodies and knockout edited cell lines for gold-standard validation. Please check that this product meets your needs before purchasing.</p> <p>If you have any questions, special requirements or concerns, please send us an inquiry and/or contact our Support team ahead of purchase. Recommended alternatives for this product can be found below, along with publications, customer reviews and Q&amp;As</p>

### 製品の特性

製品の状態	Liquid
保存方法	Shipped at 4°C. Store at +4°C short term (1-2 weeks). Upon delivery aliquot. Store at -20°C or -80°C. Avoid freeze / thaw cycle.
バッファー	<p>pH: 7.30</p> <p>Preservative: 0.09% Sodium azide</p> <p>Constituents: 98.91% PBS, 1% BSA</p>
特記事項(精製)	Gel filtration
ポリ/モノ	モノクローナル
クローン名	B-N6
ミエローマ	x63-Ag8.653
アイソタイプ	IgM
軽鎖の種類	kappa

## アプリケーション

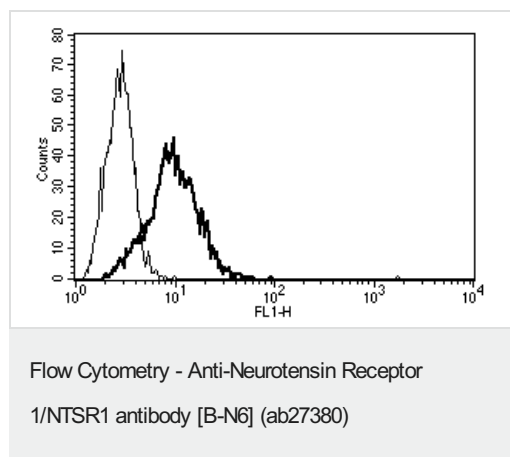
**The Abpromise guarantee**      **Abpromise保証は、** 次のテスト済みアプリケーションにおけるab27380の使用に適用されます  
アプリケーションノートには、推奨の開始希釈率がありますが、適切な希釈率につきましてはご検討ください。

アプリケーション	Abreviews	特記事項
Flow Cyt		Use 10µl for 10 <sup>6</sup> cells. <b>ab91545</b> - Mouse monoclonal IgM, is suitable for use as an isotype control with this antibody.

## ターゲット情報

機能	G-protein coupled receptor for the tridecapeptide neurotensin (NTS) (PubMed:8381365, PubMed:21725197, PubMed:23140271). Signaling is effected via G proteins that activate a phosphatidylinositol-calcium second messenger system. Signaling leads to the activation of downstream MAP kinases and protects cells against apoptosis (PubMed:21725197).
組織特異性	Expressed in prostate (at protein level). Detected in colon and peripheral blood mononuclear cells. Detected at very low levels in brain.
配列類似性	Belongs to the G-protein coupled receptor 1 family. Neurotensin receptor subfamily. NTSR1 sub-subfamily.
ドメイン	The ligand binding pocket consists mainly of extracellular loops ECL2 and ECL3, as well as transmembrane regions TM6 and TM7.
翻訳後修飾	N-glycosylated. Palmitoylated; this is required for normal localization at membrane rafts and normal GNA11-mediated activation of down-stream signaling cascades. The palmitoylation level increases in response to neurotensin treatment.
細胞内局在	Cell membrane. Membrane raft. Palmitoylation is required for localization at CAV1-enriched membrane rafts.

## 画像



Staining pattern of NTR transfected CHO cell line with ab27380.

**Please note:** All products are "FOR RESEARCH USE ONLY. NOT FOR USE IN DIAGNOSTIC PROCEDURES"

### **Our Abpromise to you: Quality guaranteed and expert technical support**

---

- Replacement or refund for products not performing as stated on the datasheet
- Valid for 12 months from date of delivery
- Response to your inquiry within 24 hours
  
- We provide support in Chinese, English, French, German, Japanese and Spanish
- Extensive multi-media technical resources to help you
- We investigate all quality concerns to ensure our products perform to the highest standards

If the product does not perform as described on this datasheet, we will offer a refund or replacement. For full details of the Abpromise, please visit <https://www.abcam.co.jp/abpromise> or contact our technical team.

### **Terms and conditions**

---

- Guarantee only valid for products bought direct from Abcam or one of our authorized distributors