

### Anti-Neuroserpin antibody ab33077

★★★★★ **1 Abreviews** **6 References** 画像数 3

#### 製品の概要

製品名	Anti-Neuroserpin antibody
製品の詳細	Rabbit polyclonal to Neuroserpin
由来種	Rabbit
アプリケーション	<b>適用あり:</b> WB, ICC/IF, IHC-FoFr
種交差性	<b>交差種:</b> Mouse, Rat <b>交差が予測される動物種:</b> Human 
免疫原	Synthetic peptide corresponding to Rat Neuroserpin aa 350 to the C-terminus (C terminal) conjugated to keyhole limpet haemocyanin. (Peptide available as <b>ab36619</b> )
特記事項	<p>The Life Science industry has been in the grips of a reproducibility crisis for a number of years. Abcam is leading the way in addressing this with our range of recombinant monoclonal antibodies and knockout edited cell lines for gold-standard validation. Please check that this product meets your needs before purchasing.</p> <p>If you have any questions, special requirements or concerns, please send us an inquiry and/or contact our Support team ahead of purchase. Recommended alternatives for this product can be found below, along with publications, customer reviews and Q&amp;As</p>

#### 製品の特性

製品の状態	Liquid
保存方法	Shipped at 4°C. Store at +4°C short term (1-2 weeks). Upon delivery aliquot. Store at -20°C or -80°C. Avoid freeze / thaw cycle.
バッファー	pH: 7.40 Preservative: 0.02% Sodium azide Constituent: PBS  Batches of this product that have a concentration < 1mg/ml may have BSA added as a stabilising agent. If you would like information about the formulation of a specific lot, please contact our scientific support team who will be happy to help.
精製度	Immunogen affinity purified
ポリ/モノ	ポリクローナル

アイソタイプIgG

アプリケーション

The Abpromise guarantee      **Abpromise保証は、次のテスト済みアプリケーションにおけるab33077の使用に適用されます**  
アプリケーションノートには、推奨の開始希釈率がありますが、適切な希釈率につきましてはご検討ください。

アプリケーション	Abreviews	特記事項
WB		
ICC/IF		
IHC-FoFr	★★★★★ (1)	

追加情報

ICC/IF: Use at a concentration of 1 µg/ml.  
IHC-FoFr: Use at an assay dependent concentration.  
WB: 1/250. Detects bands of approximately 46 and 55 kDa (predicted molecular weight: 46 kDa).

Not yet tested in other applications.  
Optimal dilutions/concentrations should be determined by the end user.

ターゲット情報

機能      Serine protease inhibitor that inhibits plasminogen activators and plasmin but not thrombin. May be involved in the formation or reorganization of synaptic connections as well as for synaptic plasticity in the adult nervous system. May protect neurons from cell damage by tissue-type plasminogen activator.

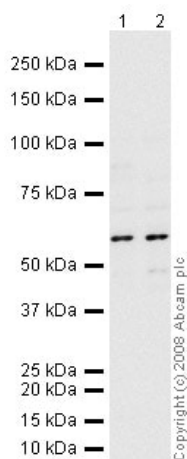
組織特異性      Predominantly expressed in the brain.

関連疾患      Defects in SERPINI1 are the cause of familial encephalopathy with neuroserpin inclusion bodies (FEN1B) [MIM:604218]. FEN1B is characterized clinically as an autosomal dominantly inherited dementia, histologically by unique neuronal inclusion bodies and biochemically by polymers of neuroserpin.

配列類似性      Belongs to the serpin family.

細胞内局在      Secreted.

画像



Western blot - Anti-Neuroserpin antibody (ab33077)

**All lanes :** Anti-Neuroserpin antibody (ab33077) at 1/250 dilution

**Lane 1 :** Brain (Mouse) Tissue Lysate

**Lane 2 :** Brain (Rat) Tissue Lysate

Lysates/proteins at 10 µg per lane.

### Secondary

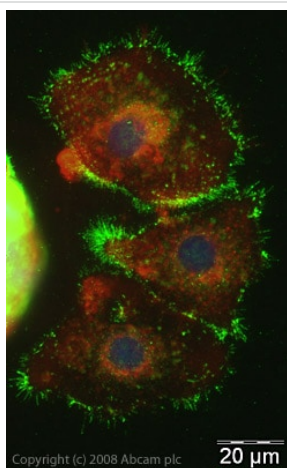
**All lanes :** Goat polyclonal to Rabbit IgG - H&L - Pre-Adsorbed (HRP) at 1/3000 dilution

Performed under reducing conditions.

**Predicted band size:** 46 kDa

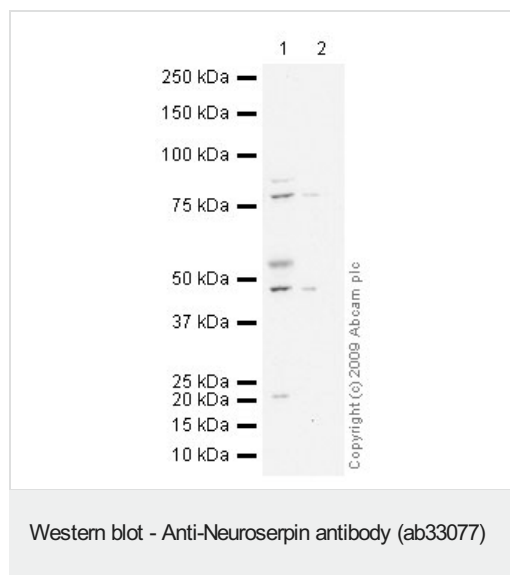
**Observed band size:** 55 kDa

Neuroserpin contains a number of potential glycosylation sites so it is thought that this is the reason it runs at 55 kDa. The band size observed is also comparable to molecular weights seen with other commercially available antibodies to Neuroserpin.



Immunocytochemistry/ Immunofluorescence - Anti-Neuroserpin antibody (ab33077)

ICC/IF image of ab33077 stained rat PC12 cells. The cells were methanol fixed (5 min), permeabilised in PBS-T (20 min) and incubated with the antibody (ab33077, 1 µg/ml) for 1h at room temperature. 1%BSA / 10% normal goat serum / 0.3M glycine was used to block non-specific protein-protein interactions. The secondary antibody (green) was Alexa Fluor® 488 goat anti-rabbit IgG (H+L) used at a 1/1000 dilution for 1h. Alexa Fluor® 594 WGA was used to label plasma membranes (red). DAPI was used to stain the cell nuclei (blue).



**All lanes :** Anti-Neuroserpin antibody (ab33077) at 1 µg/ml

**Lane 1 :** Brain (Mouse) Tissue Lysate

**Lane 2 :** Brain (Rat) Tissue Lysate

Lysates/proteins at 10 µg per lane.

### Secondary

**All lanes :** Goat polyclonal to Rabbit IgG - H&L - Pre-Adsorbed (HRP) at 1/3000 dilution

Performed under reducing conditions.

**Predicted band size:** 46 kDa

**Observed band size:** 46,55 kDa

**Additional bands at:** 80 kDa. We are unsure as to the identity of these extra bands.

**Exposure time:** 10 minutes

**Please note:** All products are "FOR RESEARCH USE ONLY. NOT FOR USE IN DIAGNOSTIC PROCEDURES"

### Our Abpromise to you: Quality guaranteed and expert technical support

- Replacement or refund for products not performing as stated on the datasheet
- Valid for 12 months from date of delivery
- Response to your inquiry within 24 hours
- We provide support in Chinese, English, French, German, Japanese and Spanish
- Extensive multi-media technical resources to help you
- We investigate all quality concerns to ensure our products perform to the highest standards

If the product does not perform as described on this datasheet, we will offer a refund or replacement. For full details of the Abpromise, please visit <https://www.abcam.co.jp/abpromise> or contact our technical team.

### Terms and conditions

- Guarantee only valid for products bought direct from Abcam or one of our authorized distributors