


Anti-Neuropeptide Y antibody ab30914

★★★★★ [17 Abreviews](#) [77 References](#) [画像数 3](#)

製品の概要

製品名	Anti-Neuropeptide Y antibody
製品の詳細	Rabbit polyclonal to Neuropeptide Y
由来種	Rabbit
アプリケーション	適用あり: IHC-P
種交差性	交差種: Human 交差が予測される動物種: Mouse, Rat, Sheep, Rabbit, Chicken, Guinea pig, Cow, Pigeon, Pig, Zebrafish, Rhesus monkey, Common marmoset 
免疫原	Synthetic peptide corresponding to Pig Neuropeptide Y aa 1 to the C-terminus conjugated to keyhole limpet haemocyanin. (Peptide available as ab32971)
特記事項	<p>The Life Science industry has been in the grips of a reproducibility crisis for a number of years. Abcam is leading the way in addressing this with our range of recombinant monoclonal antibodies and knockout edited cell lines for gold-standard validation. Please check that this product meets your needs before purchasing.</p> <p>If you have any questions, special requirements or concerns, please send us an inquiry and/or contact our Support team ahead of purchase. Recommended alternatives for this product can be found below, along with publications, customer reviews and Q&As</p>

製品の特性

製品の状態	Liquid
保存方法	Shipped at 4°C. Store at +4°C short term (1-2 weeks). Upon delivery aliquot. Store at -20°C or -80°C. Avoid freeze / thaw cycle.
バッファー	pH: 7.40 Preservative: 0.02% Sodium azide Constituent: PBS
精製度	Batches of this product that have a concentration < 1mg/ml may have BSA added as a stabilising agent. If you would like information about the formulation of a specific lot, please contact our scientific support team who will be happy to help. Immunogen affinity purified

ポリ/モノ
アイソタイプ

ポリクローナル
IgG

アプリケーション

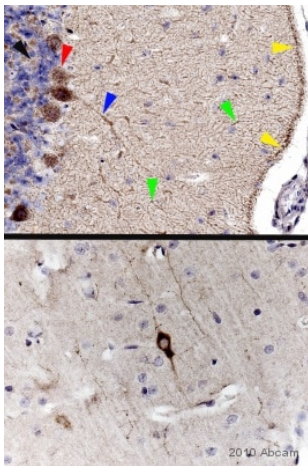
The Abpromise guarantee **Abpromise保証は、** 次のテスト済みアプリケーションにおけるab30914の使用に適用されます
アプリケーションノートには、推奨の開始希釈率がありますが、適切な希釈率につきましてはご検討ください。

アプリケーション	Abreviews	特記事項
IHC-P	★★★★★ (8)	Use at an assay dependent concentration.

ターゲット情報

機能	NPY is implicated in the control of feeding and in secretion of gonadotrophin-release hormone.
組織特異性	One of the most abundant peptides in the nervous system. Also found in some chromaffin cells of the adrenal medulla.
配列類似性	Belongs to the NPY family.
細胞内局在	Secreted.

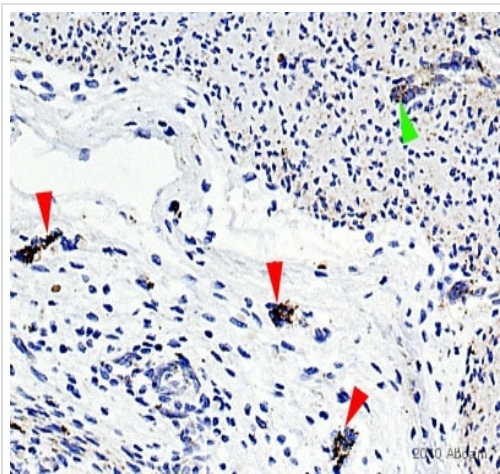
画像



Immunohistochemical detection of Neuropeptide Y using ab30914 on formaldehyde-fixed paraffin-embedded rat brain sections. The image shows NPY staining in the cerebellum and frontal cortex of the rat brain. Formaldehyde antigen retrieval step: heat mediated in citric acid pH6 buffer. Blocking step: 1% BSA for 10 mins at room temperature. ab30914 incubated at 1/1000 for 2 hours in TBS/BSA/azide. Secondary Antibody: anti-rabbit IgG conjugated to biotin (1/200)

Immunohistochemistry (Formalin/PFA-fixed paraffin-embedded sections) - Anti-Neuropeptide Y antibody (ab30914)

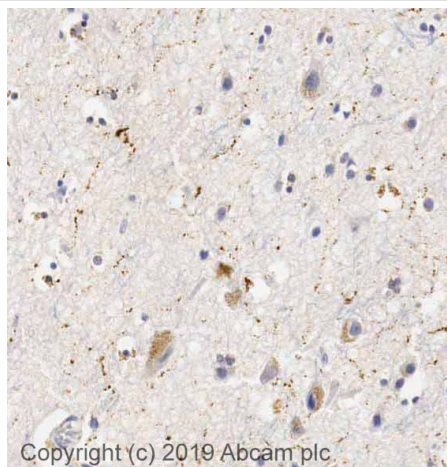
This image is courtesy of an abreview submitted by Carl Hobbs, King's College London, United Kingdom



Immunohistochemistry (Formalin/PFA-fixed paraffin-embedded sections) - Anti-Neuropeptide Y antibody (ab30914)

This image is courtesy of an abreview submitted by Carl Hobbs, King's College London, United Kingdom

Immunohistochemical detection of Neuropeptide Y antibody (ab30914) on formaldehyde fixed paraffin-embedded human foetal wall sections. Antigen retrieval step: Heat mediated. Buffer: Citric acid pH6. Permeabilization: None. Blocking step: 1% BSA for 10 mins at 21°C. Primary antibody incubated at 1/1500 for 2 hours at 21°C in TBS/BSA/azide. Abcam's EXPOSE detection kit was used: **ab80436**. NB: In the submitted image arrowheads indicate positive features: red for ganglion cells in the Submucosa (Meissner's plexus), green for ganglion cells in the Muscularis externa (Auerbach's plexus). There is also a diffuse fine positivity throughout the smooth muscle cells of the externa.



Immunohistochemistry (Formalin/PFA-fixed paraffin-embedded sections) - Anti-Neuropeptide Y antibody (ab30914)

IHC image of Neuropeptide Y antibody staining in a section of formalin-fixed paraffin-embedded human cerebral cortex* tissue performed on a Leica BOND™ system using the standard protocol. The section was pre-treated using heat mediated antigen retrieval with sodium citrate buffer (pH6, epitope retrieval solution 1) for 20mins. The section was then incubated with ab30914, 1ug/ml, for 15 mins at room temperature and detected using an HRP conjugated compact polymer system. DAB was used as the chromogen. The section was then counterstained with haematoxylin and mounted with DPX.

For other IHC staining systems (automated and non-automated) customers should optimize variable parameters such as antigen retrieval conditions, primary antibody concentration and antibody incubation times.

**Tissue obtained from the Human Research Tissue Bank, supported by the NIHR Cambridge Biomedical Research Centre*

Please note: All products are "FOR RESEARCH USE ONLY. NOT FOR USE IN DIAGNOSTIC PROCEDURES"

Our Promise to you: Quality guaranteed and expert technical support

- Replacement or refund for products not performing as stated on the datasheet

- Valid for 12 months from date of delivery
- Response to your inquiry within 24 hours
- We provide support in Chinese, English, French, German, Japanese and Spanish
- Extensive multi-media technical resources to help you
- We investigate all quality concerns to ensure our products perform to the highest standards

If the product does not perform as described on this datasheet, we will offer a refund or replacement. For full details of the Abpromise, please visit <https://www.abcam.co.jp/abpromise> or contact our technical team.

Terms and conditions

- Guarantee only valid for products bought direct from Abcam or one of our authorized distributors