

Anti-Neuropeptide Y antibody [8] ab112473

★★★★★ **1 Abreviews** **10 References** **画像数 5**

製品の概要

製品名	Anti-Neuropeptide Y antibody [8]
製品の詳細	Mouse monoclonal [8] to Neuropeptide Y
由来種	Mouse
特異性	Cross-reactivity with Neuropeptide Y(1-24), Neuropeptide Y (18-36), Peptide YY or Pancreatic Polypeptide was <0.2%.
アプリケーション	適用あり: IHC-P
種交差性	交差種: Mouse, Human
免疫原	Synthetic peptide corresponding to a region within Human/Rat Neuropeptide Y adsorbed onto aluminum hydroxide gel.
エピトープ	The epitope of ab112473 is probably around the mid-molecular region of Neuropeptide Y.
ポジティブ・コントロール	Mouse brain tissue (fibres in the hilus of the hippocampus, following epileptic attack) Mouse brain tissue (interneurons in the cortex)
特記事項	<p>The Life Science industry has been in the grips of a reproducibility crisis for a number of years. Abcam is leading the way in addressing this with our range of recombinant monoclonal antibodies and knockout edited cell lines for gold-standard validation. Please check that this product meets your needs before purchasing.</p> <p>If you have any questions, special requirements or concerns, please send us an inquiry and/or contact our Support team ahead of purchase. Recommended alternatives for this product can be found below, along with publications, customer reviews and Q&As</p>

製品の特性

製品の状態	Liquid
保存方法	Shipped at 4°C. Store at +4°C short term (1-2 weeks). Store at -20°C or -80°C. Avoid freeze / thaw cycle.
バッファー	pH: 7.40 Preservative: 0.1% Sodium azide Constituents: 2.9% Sodium chloride, 97% PBS
精製度	Protein G purified
ポリ/モノ	モノクローナル

クローン名	8
アイソタイプ	IgG1
軽鎖の種類	kappa

アプリケーション

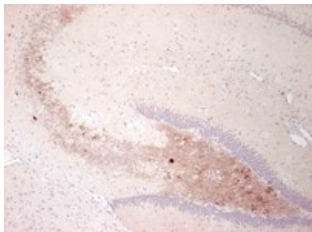
The Abpromise guarantee **Abpromise保証は、次のテスト済みアプリケーションにおけるab112473の使用に適用されます**
 アプリケーションノートには、推奨の開始希釈率がありますが、適切な希釈率につきましてはご検討ください。

アプリケーション	Abreviews	特記事項
IHC-P	★★★★★ (1)	1/1000.

ターゲット情報

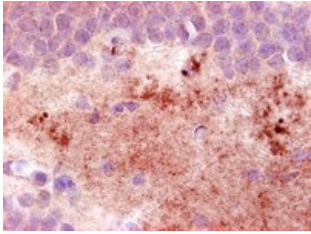
機能	NPY is implicated in the control of feeding and in secretion of gonadotrophin-release hormone.
組織特異性	One of the most abundant peptides in the nervous system. Also found in some chromaffin cells of the adrenal medulla.
配列類似性	Belongs to the NPY family.
細胞内局在	Secreted.

画像



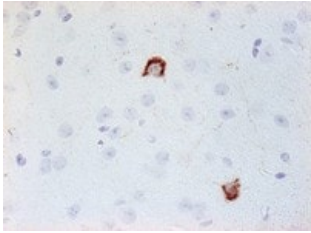
ab112473, at 1/1000, staining Neuropeptide Y in paraffin embedded Mouse brain tissue (fibres in the hilus of the hippocampus) from a mouse suffering an epileptic attack just before perfusion by Immunohistochemistry.

Immunohistochemistry (Formalin/PFA-fixed paraffin-embedded sections) - Anti-Neuropeptide Y antibody [8] (ab112473)



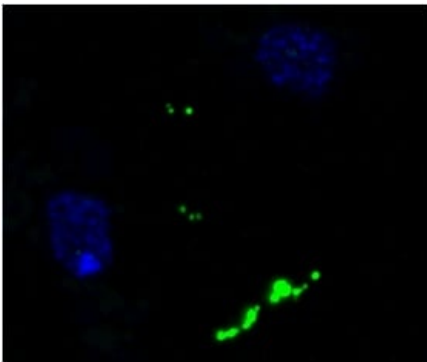
Immunohistochemistry (Formalin/PFA-fixed paraffin-embedded sections) - Anti-Neuropeptide Y antibody [8] (ab112473)

ab112473, at 1/1000, staining Neuropeptide Y in paraffin embedded Mouse brain tissue (fibres in the hilus of the hippocampus) from a mouse suffering an epileptic attack just before perfusion by Immunohistochemistry.



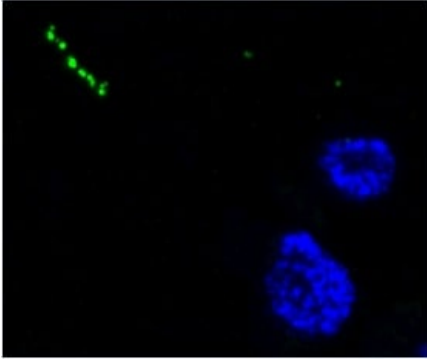
Immunohistochemistry (Formalin/PFA-fixed paraffin-embedded sections) - Anti-Neuropeptide Y antibody [8] (ab112473)

ab112473, at 1/1000, staining Neuropeptide Y in paraffin embedded Mouse brain tissue (interneurons in the cortex) by Immunohistochemistry.



Immunohistochemistry (Formalin/PFA-fixed paraffin-embedded sections) - Anti-Neuropeptide Y antibody [8] (ab112473)

Immunofluorescence images of tissue from human cerebral cortex, applying ab112473 to ultra thin sections (antibody: green, DAPI-stained nuclei: blue). The antibody labels NPY-positive processes in the neutrophil.



Immunofluorescence images of tissue from human cerebral cortex, applying ab112473 to ultra thin sections (antibody: green, DAPI-stained nuclei: blue). The antibody labels NPY-positive processes in the neutrophil.

Immunohistochemistry (Formalin/PFA-fixed paraffin-embedded sections) - Anti-Neuropeptide Y antibody [8] (ab112473)

Please note: All products are "FOR RESEARCH USE ONLY. NOT FOR USE IN DIAGNOSTIC PROCEDURES"

Our Abpromise to you: Quality guaranteed and expert technical support

- Replacement or refund for products not performing as stated on the datasheet
- Valid for 12 months from date of delivery
- Response to your inquiry within 24 hours
- We provide support in Chinese, English, French, German, Japanese and Spanish
- Extensive multi-media technical resources to help you
- We investigate all quality concerns to ensure our products perform to the highest standards

If the product does not perform as described on this datasheet, we will offer a refund or replacement. For full details of the Abpromise, please visit <https://www.abcam.co.jp/abpromise> or contact our technical team.

Terms and conditions

- Guarantee only valid for products bought direct from Abcam or one of our authorized distributors